

# BEAUTY & BEAST<sup>®</sup>

DISPLAY MERCHANDISERS

GRAB-N-GO



# **TURBO AIR DISPLAY MERCHANDISERS**

Over 500+ Open Display Merchandiser models available

REFRIGERATOR MANUFACTURER  
***Turbo air***



## Contents

### Open Display Merchandisers

#### Horizontal Cases

- Slim / Low Profiles
- European Straight
- Drop-In Type European Straight

#### Combination Cases

- Curved / European Straight

#### Vertical Cases

- Slim Profiles
- Medium / Full Heights
- Extra Deep
- Air Curtains

### Island Display Cases

### Bakery & Deli Display Cases

- Curved Glass Bakery Cases
- European Straight Bakery Cases
- Bakery Display Cases
- Drop-In Type Bakery Display Cases
- Sandwich & Cheese Cases
- Curved Glass Deli Cases

### Glass Door Merchandisers

- Swing Door Refrigerators & Freezers
- Full View Swing Door Refrigerators & Freezers

### Underbar Equipment

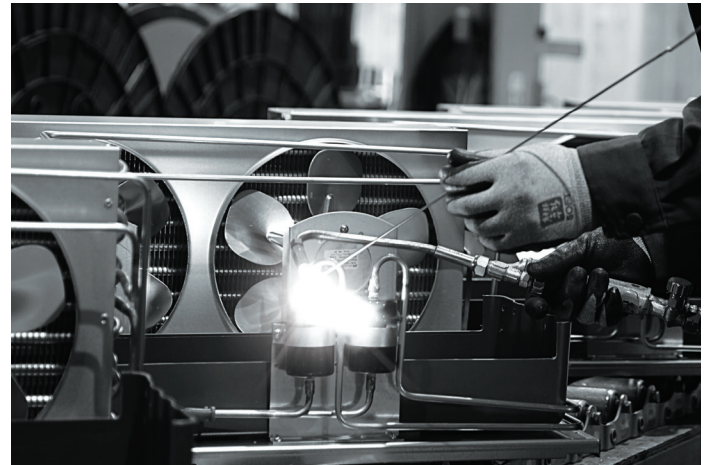
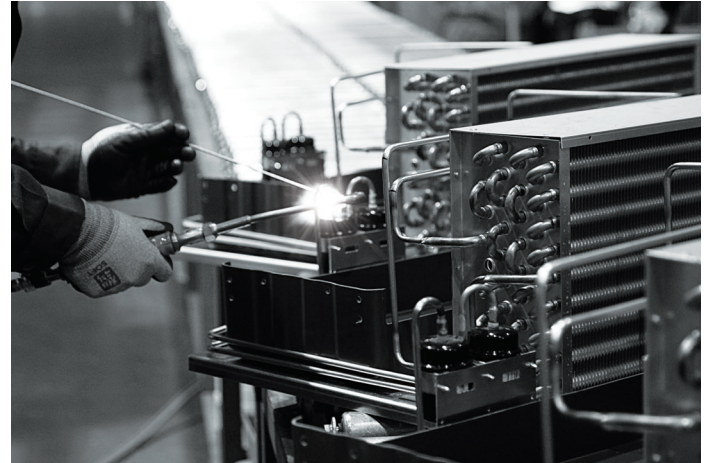
- Back Bars
- Beer Dispensers

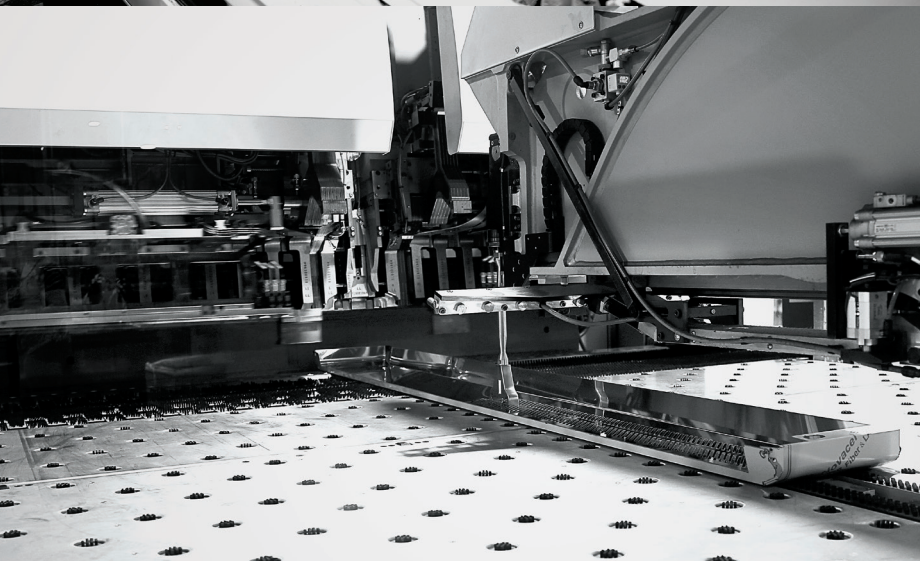


## Workmanship

# One's hands are the greatest tool

From laser cutting, welding, and bending, we utilize many types of robots for production but ultimately, the most important tool is our hands. Every unit is not complete until it has been thoroughly inspected and perfected by hand.







## Self-Cleaning Condenser Only at Turbo Air

Turbo Air is the trailblazer of the refrigeration industry. We have solved the age-old problem: dirty condensers causing the majority of service calls. To solve this problem, we invented the Self-Cleaning Condenser that automatically cleans the dust off the condenser daily. This revolutionary device is available on all our display cases, glass door merchandisers and underbar units at no additional cost. All our units utilize environmentally friendly hydrocarbon refrigerants and have an aesthetic design that increases sales and elevates any setting.





# Features & Benefits

## Self-Cleaning Condenser

The accumulation of dust in the condenser causes the failure or breakdown of refrigerators. Refrigerators run normally until they reach a certain level of accumulation. At some point, when they are over the limit, their performance drops quickly resulting in damage to, or disposal of the stored products in refrigerators. The self-cleaning condenser device keeps the condenser clean and prevents system failure by automatically brushing daily.

## Hydrocarbon Refrigerants

With innovative and eco-friendly technology, Turbo Air brings you hydrocarbon refrigerators designed to meet DOE's Energy Conservation Standards in 2017 and to use EPA's SNAP Program approved HC refrigerants. Hydrocarbon refrigerants do not deplete the ozone layer and have very low contribution to global warming (ODP-0, GWP-3).

## Modern Design

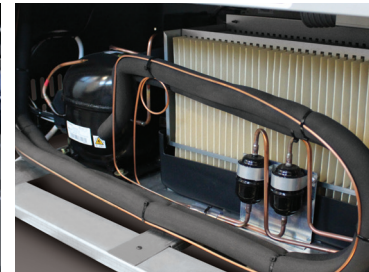
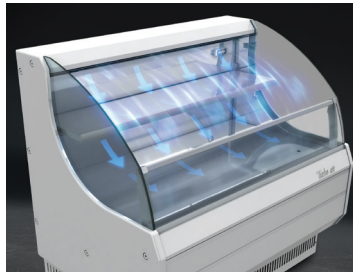
The contemporary look is designed to be eye-catching, increasing impulse sales of any stocked product. A safety reinforced tempered glass front shield and side walls allow high visibility with easy accessibility. Most of the units come with color options of classic black, chic white, and sleek stainless steel to complement the interior of any grocery store, deli, cafe, hotel, and more.

## Self-Contained System

Our self-contained system makes it easy to service and perform maintenance. Installation is a simple "plug and play" operation, in which there is no technical work required.

## Efficient Airflow

Our unique refrigeration technology allows cold air to flow throughout, which maintains an equal temperature from top to bottom.





*Turbo air*



## Slim / Low Profiles

# Horizontal Open Display Cases

### Self-Cleaning Condenser

A fine mesh filter catches dust, while rotating brushes run daily to move dirt away from the condenser. This revolutionary device comes at no additional cost.

### Hydrocarbon Refrigerants

With innovative and eco-friendly technology, Turbo Air brings you hydrocarbon refrigerators designed to meet DOE's Energy Conservation Standards in 2017 and to use EPA's SNAP Program approved HC refrigerants. Hydrocarbon refrigerants do not deplete the ozone layer and have very low contribution to global warming (ODP-0, GWP-3).

### LED Interior Lighting

The LED lighting system illuminates products for better visibility to increase grab-and-go sales.

### Security Cover

Energy saving night curtain (optional)  
Security Cover available (optional)  
See page 63 for Security Cover models and specifications.

### Digital Temperature Controller

External digital temperature control has an easily accessible panel to quickly adjust temperatures, which includes a defrost control.

### Top Display Dry Cases

Top display dry cases available in all sizes (optional)

See page 57 for Top Display Dry Cases models and specifications.

### Glass & Solid Side Panel

TOM-S/L-N: Glass side panel

TOM-S/L-SP(-A)-N: Solid side panel

### Additional Features

- Standard back-guard improves airflow
- Stainless steel solid shelves standard (TOM-S-N: stair shelves)
- Perforated interior back wall & open top for improved air flow
- Foamed with polyurethane, high-density cell insulation (CFC free)
- Front air intake and rear air discharge
- Color: white, black, stainless steel
- 2 year parts and labor warranty with additional 3 year compressor warranty

See page 56 for Slim / Low Profiles-Horizontal models and specifications.





## European Straight Horizontal Open Display Cases

### Self-Cleaning Condenser

A fine mesh filter catches dust, while rotating brushes run daily to move dirt away from the condenser. This revolutionary device comes at no additional cost.

### LED Interior Lighting

The LED lighting system illuminates products for better visibility to increase grab-and-go sales.

### Digital Temperature Controller

External digital temperature control has an easily accessible panel to quickly adjust temperatures, which includes a defrost control.

### Designed to enhance impulsive sales

Ideal for eye-catching displays and convenient access with fast service in high traffic area.

### Bottom stainless steel solid shelf and glass shelves standard

### Sliding Rear Glass Doors (UFD models)

Sliding rear doors make it easily accessible and convenient to arrange products. These doors are built to withstand constant sliding open and close.

### Security Cover

Energy saving night curtain standard

### Additional Features

- Standard back-guard improves airflow
- Perforated interior back wall & open top for improved air flow
- Foamed with polyurethane, high-density cell insulation (CFC free)
- Front air intake and rear air discharge
- Color: white, black, stainless steel
- 2 year parts and labor warranty with additional 3 year compressor warranty

See page 58-59 for European Straight-Horizontal models and specifications.



APFELSCHOKLE 0.2	2.20	KAFFEE MIT	1.20	APFELSCHOKLE 0.1	2.20
LEMONADE 0.3	2.20	CHAI LATTE	2.20	LEMONADE 0.4	2.20
SHIRAZ 0.4	3.20	EXTRA SAHNE	1.40	SHIRAZ 0.3	3.20
SOJA MILK 0.2	2.40	EXTRA SHOT	1.20	SOJA MILK 0.3	2.40
FRITZ COLA 0.2	2.40	EXTRA (50%)	1.40	FRITZ COLA 0.3	2.40
PETER PAN 0.3	4.20	HOT CHOCOLATE	3.00	PETER PAN 0.4	4.20



## Drop-In Type European Straight (Glass side panel) Horizontal Open Display Cases

### Self-Cleaning Condenser

A fine mesh filter catches dust, while rotating brushes run daily to move dirt away from the condenser. This revolutionary device comes at no additional cost.

### LED Interior Lighting

The LED lighting system illuminates products for better visibility to increase grab-and-go sales. Each shelf is equipped with LED lights to reduce shadows.

### Digital Temperature Controller

External digital temperature control has an easily accessible panel to quickly adjust temperatures, which includes a defrost control.

### Designed to enhance impulsive sales

Ideal for eye-catching displays and convenient access with fast service in high traffic area.

### Security Cover

Energy saving night curtain standard

### Additional Features

- Standard back-guard improves airflow
- Bottom stainless steel solid shelf and glass shelves standard
- Perforated interior back wall & open top for improved air flow
- Foamed with polyurethane, high-density cell insulation (CFC free)
- Front air intake and rear air discharge
- Color: white, black, stainless steel
- 2 year parts and labor warranty with additional 3 year compressor warranty

See page 58-59 for Drop-In Type European Straight (Glass side panel) models and specifications.





## Drop-In Type European Straight (Solid side panel) Horizontal Open Display Cases

### Self-Cleaning Condenser

A fine mesh filter catches dust, while rotating brushes run daily to move dirt away from the condenser. This revolutionary device comes at no additional cost.

### LED Interior Lighting

The LED lighting system illuminates products for better visibility to increase grab-and-go sales.

### Digital Temperature Controller

External digital temperature control has an easily accessible panel to quickly adjust temperatures, which includes a defrost control.

### Designed to enhance impulsive sales

Ideal for eye-catching displays and convenient access with fast service in high traffic area.

### Security Cover

Energy saving night curtain standard

### Additional Features

- Stainless steel interior standard including back wall and deck pans
- Standard back-guard improves airflow
- Perforated interior back wall & open top for improved air flow
- Foamed with polyurethane, high-density cell insulation (CFC free)
- Front air intake and rear air discharge
- Color: white, black, stainless steel
- 2 year parts and labor warranty with additional 3 year compressor warranty

See page 60 for Drop-In Type European Straight (Solid side panel) models and specifications.





- Steaks 10,500  
- Comfort carbonara  
- Tagliatelle  
- Tagliatelle aux champignons 9,50

BLANK JORD  
STRAYA CRAFT COFFEE  
UNBLE  
REVEALATOR  
PALE RIDER

PRINCE & PAIDES  
UNBLE  
REVEALATOR  
PALE RIDER



## Curved / European Straight Horizontal Combination Open Display Cases

### Refrigerated Merchandiser + Refrigerated Top Display Case

### Self-Cleaning Condenser

A fine mesh filter catches dust, while rotating brushes run daily to move dirt away from the condenser. This revolutionary device comes at no additional cost.

### Hydrocarbon Refrigerants

With innovative and eco-friendly technology, Turbo Air brings you hydrocarbon refrigerators designed to meet DOE's Energy Conservation Standards in 2017 and to use EPA's SNAP Program approved HC refrigerants. Hydrocarbon refrigerants do not deplete the ozone layer and have very low contribution to global warming (ODP-0, GWP-3).

### LED Interior Lighting

The LED lighting system illuminates products for better visibility to increase grab-and-go sales.

### Digital Temperature Controller

External digital temperature control has an easily accessible panel to quickly adjust temperatures, which includes a defrost control.

### Designed to enhance impulsive sales

Ideal for eye-catching displays and convenient access with fast service in high traffic area.

### Additional Features

- Stainless steel interior standard including back wall and deck pans
- Standard back-guard improves airflow
- Stainless steel stair shelves standard
- Perforated interior back wall & top for improved air flow
- Foamed with polyurethane, high-density cell insulation (CFC free)
- Front air intake and rear air discharge
- Color: black, white (8 week lead time)
- 2 year parts and labor warranty with additional 3 year compressor warranty

See page 57 for Curved / European Straight Combination models and specifications.



## Slim Profiles

# Vertical Open Display Cases

### Self-Cleaning Condenser

A fine mesh filter catches dust, while rotating brushes run daily to move dirt away from the condenser. This revolutionary device comes at no additional cost.

### LED Interior Lighting

The LED lighting system illuminates products for better visibility to increase grab-and-go sales. Each shelf is equipped with LED lights to reduce shadows.

### Digital Temperature Controller

External digital temperature control has an easily accessible panel to quickly adjust temperatures, which includes a defrost control.

### Hydrocarbon Refrigerants

With innovative and eco-friendly technology, Turbo Air brings you hydrocarbon refrigerators designed to meet DOE's Energy Conservation Standards in 2017 and to use EPA's SNAP Program approved HC refrigerants. Hydrocarbon refrigerants do not deplete the ozone layer and have very low contribution to global warming (ODP-0, GWP-3).

### Designed to enhance impulsive sales

Ideal for eye-catching displays and convenient access with fast service in high traffic area.

### Tempered glass shelves standard (cantilever type)

### Standard back-guard improves airflow

#### Additional Features

- Perforated interior back wall & top for improved air flow
- Bottom glass shelf and stainless steel back wall with a mirror finish
- Foamed with polyurethane, high-density cell insulation (CFC free)
- Front air intake and rear air discharge
- Color: white (mirror finish), black (mirror finish) stainless steel (matte finish)
- 2 year parts and labor warranty with additional 3 year compressor warranty

See page 60 for Slim Profiles-Vertical models and specifications.







## Medium / Full Heights Vertical Open Display Cases

### Self-Cleaning Condenser

A fine mesh filter catches dust, while rotating brushes run daily to move dirt away from the condenser. This revolutionary device comes at no additional cost.

### Hydrocarbon Refrigerants

With innovative and eco-friendly technology, Turbo Air brings you hydrocarbon refrigerators designed to meet DOE's Energy Conservation Standards in 2017 and to use EPA's SNAP Program approved HC refrigerants.

Hydrocarbon refrigerants do not deplete the ozone layer and have very low contribution to global warming (ODP-0, GWP-3).

### LED Interior Lighting

The LED lighting system illuminates products for better visibility to increase grab-and-go sales. Each shelf is equipped with LED lights to reduce shadows.

### Digital Temperature Controller

External digital temperature control has an easily accessible panel to quickly adjust temperatures, which includes a defrost control.

### Designed to enhance impulsive sales

Ideal for eye-catching displays and convenient access with fast service in high traffic area.

### Security Cover

Energy saving night curtain (standard)  
Security Cover available (optional)  
See page 63 for Security Cover models and specifications.

### Glass & Solid side panel

TOM-N / TOM-M-N: Glass side panel  
TOM-SP(-A)-N / TOM-M-SP(-A)-N: Solid side panel

### Additional Features

- Stainless steel solid shelves standard
- Standard back-guard improves airflow
- Perforated interior back wall & top for improved air flow
- Foamed with polyurethane, high-density cell insulation (CFC free)
- Front air intake and rear air discharge
- Color: white, black, stainless steel
- 2 year parts and labor warranty with additional 3 year compressor warranty

See page 60-61 for Medium / Full Height-Vertical models and specifications.



*Turbo air*  
NATURAL Refrigerant



Warwick  
CINEMA

Warwick  
CINEMA

Warwick  
CINEMA



## Extra Deep Vertical Open Display Cases

### Self-Cleaning Condenser

A fine mesh filter catches dust, while rotating brushes run daily to move dirt away from the condenser. This revolutionary device comes at no additional cost.

### Hydrocarbon Refrigerants

With innovative and eco-friendly technology, Turbo Air brings you hydrocarbon refrigerators designed to meet DOE's Energy Conservation Standards in 2017 and to use EPA's SNAP Program approved HC refrigerants.

Hydrocarbon refrigerants do not deplete the ozone layer and have very low contribution to global warming (ODP-0, GWP-3).

### LED Interior Lighting

The LED lighting system illuminates products for better visibility to increase grab-and-go sales. Each shelf is equipped with LED lights to reduce shadows.

### Digital Temperature Controller

External digital temperature control has an easily accessible panel to quickly adjust temperatures, which includes a defrost control.

### Designed to enhance impulsive sales

Ideal for eye-catching displays and convenient access with fast service in high traffic area.

### Security Cover

Energy saving night curtain (standard)  
Security Cover available (optional)  
See page 63 for Security Cover models and specifications.

### Glass & Solid side panel

TOM-DXB-N: Glass side panel  
TOM-DXB-SP(-A)-N: Solid side panel

### Additional Features

- Perforated interior back wall & top for improved air flow
- Foamed with polyurethane, high-density cell insulation (CFC free)
- Front air intake and rear air discharge
- Color: black, stainless steel
- 2 year parts and labor warranty with additional 3 year compressor warranty

See page 61 for Extra Deep-Vertical models and specifications.





SOURCED FROM THE  
FARM, THE FIELD  
AND THE  
GREENHOUSE

NOUN: VER-DU-RAY  
VEGETABLE

*refreshments  
to go*



*Turbo air*

## Air Curtains

# Vertical Open Display Cases

### Self-Cleaning Condenser

A fine mesh filter catches dust, while rotating brushes run daily to move dirt away from the condenser. This revolutionary device comes at no additional cost.

### Hydrocarbon Refrigerants

With innovative and eco-friendly technology, Turbo Air brings you hydrocarbon refrigerators designed to meet DOE's Energy Conservation Standards in 2017 and to use EPA's SNAP Program approved HC refrigerants. Hydrocarbon refrigerants do not deplete the ozone layer and have very low contribution to global warming (ODP-0, GWP-3).

### LED Interior Lighting

The LED lighting system illuminates products for better visibility to increase grab-and-go sales. Each shelf is equipped with LED lights to reduce shadows.

### Digital Temperature Controller

External digital temperature control has an easily accessible panel to quickly adjust temperatures, which includes a defrost control.

### Designed to enhance impulsive sales

Ideal for eye-catching displays and convenient access with fast service in high traffic area.

### Security Cover

Energy saving night curtain (standard)  
Security Cover available (optional)  
See page 63 for Security Cover models and specifications.

### Additional Features

- Price tag channel (standard)
- Perforated interior back wall & top for improved air flow
- Foamed with polyurethane, high-density cell insulation (CFC free)
- Front air intake and rear air discharge
- Color: black, stainless steel
- 2 year parts and labor warranty with additional 3 year compressor warranty

See page 62 for Air Curtain-Vertical models and specifications.





## Island Display Cases

### Self-Cleaning Condenser

A fine mesh filter catches dust, while rotating brushes run daily to move dirt away from the condenser. This revolutionary device comes at no additional cost.

### Hydrocarbon Refrigerants

With innovative and eco-friendly technology, Turbo Air brings you hydrocarbon refrigerators designed to meet DOE's Energy Conservation Standards in 2017 and to use EPA's SNAP Program approved HC refrigerants. Hydrocarbon refrigerants do not deplete the ozone layer and have very low contribution to global warming (ODP-0, GWP-3).

### LED lighting on top panel and canopy

Brighter and longer lasting LED lights provide attractive enhanced illumination compared to fluorescents. It saves energy by producing less heat, while maximizing visibility in the display area.

### Digital Temperature Controller

External digital temperature control has an easily accessible panel to quickly adjust temperatures, which includes a defrost control.

### Designed to enhance impulsive sales

Ideal for eye-catching displays and convenient access with fast service in high traffic area.

### Additional Features

- Advertising panel
- ABS bump guard liners
- 5mm thick durable clear PC (polycarbonate) product stopper
- Simple plug-in installation
- Color: black, stainless steel
- 2 year parts and labor warranty with additional 3 year compressor warranty

See page 62 for Island Display Case models and specifications.





## Curved Glass Bakery Display Cases

### Display Cases Type

Refrigerated, Dry, Refrigerated & Dry Case Combination

### Self-Cleaning Condenser

A fine mesh filter catches dust, while rotating brushes run daily to move dirt away from the condenser. This revolutionary device comes at no additional cost.

### Hydrocarbon Refrigerants

With innovative and eco-friendly technology, Turbo Air brings you hydrocarbon refrigerators designed to meet DOE's Energy Conservation Standards in 2017 and to use EPA's SNAP Program approved HC refrigerants. Hydrocarbon refrigerants do not deplete the ozone layer and have very low contribution to global warming (ODP-0, GWP-3) (not applicable to Dry Cases).

### LED Interior Lighting

The LED lighting system illuminates products for better visibility to increase sales. Each shelf is equipped with LED lights to reduce shadows.

### Low-E coated double pane glass is tempered for safety

### Digital Temperature Controller

External digital temperature control has an easily accessible panel to quickly adjust temperatures, which includes a defrost control.

### Designed to enhance impulsive sales

Ideal for eye-catching displays and convenient access with fast service in high traffic area.

### Attractive, elegant, glass sided Euro design

Curved tempered front glass and minimal frame provide full product visibility to optimize display effects. Its elegant contemporary euro design will not only enhance any store atmosphere but also will keep product presentation at its best and most beautiful.

### Additional Features

- Cantilever wired shelves adjustable up and down, tilted
- Stainless steel floor and airflow grille
- Sliding rear doors for product loading & unloading
- Rear access to compressor compartment for quick and easy service
- Color: white, black
- 2 year parts and labor warranty with additional 3 year compressor warranty

See page 64 for Curved Glass-Bakery Case models and specifications.





*Turbo air*  
NATURAL  
REFRIGERATION



## European Straight Bakery Display Cases

### Display Case Types

Refrigerated, Freezer, Dry, Refrigerated & Dry Case Combination

### Self-Cleaning Condenser

A fine mesh filter catches dust, while rotating brushes run daily to move dirt away from the condenser. This revolutionary device comes at no additional cost.

### Hydrocarbon Refrigerants

With innovative and eco-friendly technology, Turbo Air brings you hydrocarbon refrigerators designed to meet DOE's Energy Conservation Standards in 2017 and to use EPA's SNAP Program approved HC refrigerants. Hydrocarbon refrigerants do not deplete the ozone layer and have very low contribution to global warming (ODP-0, GWP-3) (not applicable to Dry Cases).

### LED Interior Lighting

The LED lighting system illuminates products for better visibility to increase sales. Each shelf is equipped with LED lights to reduce shadows.

### Digital Temperature Controller

External digital temperature control has an easily accessible panel to quickly adjust temperatures, which includes a defrost control.

### Designed to enhance impulsive sales

Ideal for eye-catching displays and convenient access with fast service in high traffic area.

### Attractive, elegant, glass sided Euro design

Tempered front glass and minimal frame provide full product visibility to optimize display effects. Its elegant contemporary euro design will not only enhance any store atmosphere but also will keep product presentation at its best and most beautiful.

### Low-E coated double pane glass is tempered for safety

Low-E coated double pane glass (Refrigerated, Dry, Refrigerated & Dry Case combination) and triple pane glass (Freezer) are tempered for safety.

### Additional Features

- Adjustable, tempered glass shelves with stainless steel front and back edges
- Stainless steel floor and airflow grille
- Sliding rear doors for product loading & unloading
- Rear access to compressor compartment for quick and easy service
- Color: white, black, stainless steel
- 2 year parts and labor warranty with additional 3 year compressor warranty

See page 64 for European Straight-Bakery Case models and specifications.



## Bakery Display Cases

### Self-Cleaning Condenser

A fine mesh filter catches dust, while rotating brushes run daily to move dirt away from the condenser. This revolutionary device comes at no additional cost.

### Hydrocarbon Refrigerants

With innovative and eco-friendly technology, Turbo Air brings you hydrocarbon refrigerators designed to meet DOE's Energy Conservation Standards in 2017 and to use EPA's SNAP Program approved HC refrigerants. Hydrocarbon refrigerants do not deplete the ozone layer and have very low contribution to global warming (ODP-0, GWP-3).

### Digital Temperature Controller

### LED Interior Lighting

The LED lighting system illuminates products for better visibility to increase sales.

### Double pane glass is tempered for safety (Front heated glass)

### Attractive, elegant, glass sided Euro design

Straight, tempered front & side glass with minimal frame provide full product visibility to optimize display effects. Its elegant contemporary euro design and luxurious colored case will not only enhance any store atmosphere but also will keep product presentation at its best and most beautiful.

### Efficient Sliding doors

Sliding rear doors for product loading & unloading (TBP-NN models)  
Sliding rear doors and front glass opening (TBP-FN models)

### Additional Features

- Front glass door lock standard (only TBP-FN models)
  - Bottom glass shelf and tempered glass shelves
  - Stainless steel airflow grille
  - Self-contained system, no plumbing required
  - 3" dia. swivel casters standard
  - Color: white (mirror finish), black (mirror finish) stainless steel (matte finish)
  - 2 year parts and labor warranty with additional 3 year compressor warranty
- See page 64-65 for Bakery Display Case models and specifications.





## Drop-In Type Bakery Display Cases

### Self-Cleaning Condenser

A fine mesh filter catches dust, while rotating brushes run daily to move dirt away from the condenser. This revolutionary device comes at no additional cost.

### Hydrocarbon Refrigerants

With innovative and eco-friendly technology, Turbo Air brings you hydrocarbon refrigerators designed to meet DOE's Energy Conservation Standards in 2017 and to use EPA's SNAP Program approved HC refrigerants. Hydrocarbon refrigerants do not deplete the ozone layer and have very low contribution to global warming (ODP-0, GWP-3).

### Digital Temperature Controller

### LED Interior Lighting

The LED lighting system illuminates products for better visibility to increase sales.

### Double pane glass is tempered for safety (Front heated glass)

### Attractive, elegant, glass sided Euro design

Straight, tempered front & side glass with minimal frame provide full product visibility to optimize display effects. Its elegant contemporary euro design and luxurious colored case will not only enhance any store atmosphere but also will keep product presentation at its best and most beautiful.

### Sliding rear doors and front glass opening

Sliding rear doors make it easily accessible and convenient to arrange products. The front glass opens just enough to clean the interior effortlessly.

### Additional Features

- Front glass door lock standard
- Bottom glass shelf and tempered glass shelves
- Stainless steel airflow grille
- Self-contained system, no plumbing required
- 3" dia. swivel casters standard
- Color: stainless steel
- 2 year parts and labor warranty with additional 3 year compressor warranty

See page 65 for Drop-In Type Bakery Display Case models and specifications.





## Sandwich & Cheese Display Cases

# Open Display Merchandisers

### Self-Cleaning Condenser

A fine mesh filter catches dust, while rotating brushes run daily to move dirt away from the condenser. This revolutionary device comes at no additional cost.

### Hydrocarbon Refrigerants

With innovative and eco-friendly technology, Turbo Air brings you hydrocarbon refrigerators designed to meet DOE's Energy Conservation Standards in 2017 and to use EPA's SNAP Program approved HC refrigerants. Hydrocarbon refrigerants do not deplete the ozone layer and have very low contribution to global warming (ODP-0, GWP-3).

### Digital Temperature Controller

**Single pane glass is tempered for safety**

### Attractive, elegant, glass sided Euro design

Straight 4 sided glass provide full product visibility to optimize display effects. Its elegant contemporary euro design and luxurious colored case will not only enhance any store atmosphere but also will keep product presentation at its best and most beautiful.

### Bottom glass shelf and stainless steel airflow grille

#### Additional Features

- Self-contained system, no plumbing required
- 3" dia. swivel casters standard
- Bottom lit, interior LED lighting applicable (optional)
- Color: white (mirror finish), black (mirror finish) stainless steel (matte finish)
- 2 year parts and labor warranty with additional 3 year compressor warranty

See page 65 for Sandwich & Cheese Display Case models and specifications.





## Curved Glass Direct Cooling Type Deli Cases



### Self-Cleaning Condenser

A fine mesh filter catches dust, while rotating brushes run daily to move dirt away from the condenser. This revolutionary device comes at no additional cost.

### Hydrocarbon Refrigerants

With innovative and eco-friendly technology, Turbo Air brings you hydrocarbon refrigerators designed to meet DOE's Energy Conservation Standards in 2017 and to use EPA's SNAP Program approved HC refrigerants. Hydrocarbon refrigerants do not deplete the ozone layer and have very low contribution to global warming (ODP-0, GWP-3).

### LED Interior Lighting

The LED lighting system illuminates products for better visibility to increase sales. Each shelf is equipped with LED lights to reduce shadows.

### Digital Temperature Controller

**Low-E coated double pane glass is tempered for safety**

### Attractive, elegant, glass sided Euro design

Curved tempered front glass and minimal frame provide full product visibility to optimize display effects. Its elegant contemporary euro design will not only enhance any store atmosphere but also will keep product presentation at its best and most beautiful.

### Stainless steel floor and airflow grille

### Heavy duty, white PE coated wire shelves

#### Additional Features

- Sliding rear doors for product loading & unloading
- Cantilever wired shelves adjustable up and down, tilted
- Rear access to compressor compartment for quick and easy service
- Color: white, black
- 2 year parts and labor warranty with additional 3 year compressor warranty

See page 66 for Deli Case models and specifications.





# Cold Drinks





## Swing Door Refrigerators Glass Door Merchandisers

### Self-Cleaning Condenser

A fine mesh filter catches dust, while rotating brushes run daily to move dirt away from the condenser. This revolutionary device comes at no additional cost (except TGM-5SD/7SD-N6).

### Hydrocarbon Refrigerants

With innovative and eco-friendly technology, Turbo Air brings you hydrocarbon refrigerators designed to meet DOE's Energy Conservation Standards in 2017 and to use EPA's SNAP Program approved HC refrigerants. Hydrocarbon refrigerants do not deplete the ozone layer and have very low contribution to global warming (ODP-0, GWP-3).

### LED Interior Lighting

The LED lighting system illuminates products for better visibility to increase grab-and-go sales.

### Hot Gas Condensate System

Condensate system surfaces have been specially treated to resist corrosion and prevents the overflow of condensate water (only TGM-35SD/47SD/72SD-N).

### Digital Temperature Controller

External digital temperature control has an easily accessible panel to quickly adjust temperatures, which includes a defrost control (except TGM-5SD/7SD-N6).

### Energy Conserving Fan Control

Utilizing algorithmic air circulation for optimal temperature levels, our innovative fan control system conserves energy by at least 15% and increases compressor life by up to 30%.

### Double Pane Glass Doors with Low-E glass

### Shadow Free Advertising Panel

(except TGM-5SD/7SD/10SD/12SD-N6)

### Additional Features

- Anti-corrosion coated evaporator standard
- Door locks standard
- Color: white, black
- 3 year parts and labor warranty with additional 4 year compressor warranty

See page 66 for Swing Door Refrigerator models and specifications.



## Swing Door Freezers

# Glass Door Merchandisers

### Self-Cleaning Condenser

A fine mesh filter catches dust, while rotating brushes run daily to move dirt away from the condenser. This revolutionary device comes at no additional cost (except TGF-5SD-N).

### Only at Turbo Air, Only in the World

Turbo Air's 2 & 3 Glass Door Freezers are powered by 115V. Not only is our 115V simple and easy to plug in and operate, it also saves customers over \$1,000 in electrical line installation for 220V powered glass door freezers.

### LED Interior Lighting

The LED lighting system illuminates products for better visibility to increase grab-and-go sales.

### Hydrocarbon Refrigerants

With innovative and eco-friendly technology, Turbo Air brings you hydrocarbon refrigerators designed to meet DOE's Energy Conservation Standards in 2017 and to use EPA's SNAP Program approved HC refrigerants. Hydrocarbon refrigerants do not deplete the ozone layer and have very low contribution to global warming (ODP-0, GWP-3).

### No electrical cabinet heater is needed

### Digital Temperature Controller

External digital temperature control has an easily accessible panel to quickly adjust temperatures, which includes a defrost control.

### Energy Conserving Fan Control

Utilizing algorithmic air circulation for optimal temperature levels, our innovative fan control system conserves energy by at least 15% and increases compressor life by up to 30%.

### Triple Pane Heated Glass Doors with Low-E glass

Equipped with unique triple-pane heated glass doors which enhance energy efficiency by preventing heat transfers and minimizing condensation. Lightweight door construction reduces door maintenance, bushing wear, and facilitates smooth door opening.

### Shadow Free Advertising Panel (except TGF-5SD/10SD-N)

#### Additional Features

- Anti-corrosion coated evaporator standard
- Door locks standard
- Color: white, black
- 3 year parts and labor warranty with additional 4 year compressor warranty

See page 66 for Swing Door Freezer models and specifications.



**TSO'S CHICKEN**

**CAULIFLOWER MAC**

**CURRY TIGER**

**WITH ORGANIC BROWN RICE**

**SHROOM SOTTO**

**LIGHT & LEAN**

**BOWLS**

**Mamma Bella's GARLIC TOAST**

**AMY'S BOWLS**

**THAI PAD THAI**

**PIE**

**YANG'S**

**BBQ Chicken Teriyaki**

**THAI GREEN CURRY**

**MINI TACOS**

**8 CHICKEN POT PIES**

**Frozen Foods**

**TSO'S CHICKEN**

**CAULIFLOWER MAC**

**CURRY TIGER**

**WITH ORGANIC BROWN RICE**

**SHROOM SOTTO**

**LIGHT & LEAN**

**BOWLS**

**Mamma Bella's GARLIC TOAST**

**AMY'S BOWLS**

**THAI PAD THAI**

**PIE**

**Frozen Foods**

**TSO'S CHICKEN**

**CAULIFLOWER MAC**

**CURRY TIGER**

**WITH ORGANIC BROWN RICE**

**SHROOM SOTTO**

**LIGHT & LEAN**

**BOWLS**

**Mamma Bella's GARLIC TOAST**

**AMY'S BOWLS**

**THAI PAD THAI**

**PIE**

**Frozen Foods**

**TSO'S CHICKEN**

**CAULIFLOWER MAC**

**CURRY TIGER**

**WITH ORGANIC BROWN RICE**

**SHROOM SOTTO**

**LIGHT & LEAN**

**BOWLS**

**Mamma Bella's GARLIC TOAST**

**AMY'S BOWLS**

**THAI PAD THAI**

**PIE**

# GRAB-N -GO



## Full View Swing Door Refrigerators Glass Door Merchandisers

### Self-Cleaning Condenser

A fine mesh filter catches dust, while rotating brushes run daily to move dirt away from the condenser. This revolutionary device comes at no additional cost.

### Hydrocarbon Refrigerants

With innovative and eco-friendly technology, Turbo Air brings you hydrocarbon refrigerators designed to meet DOE's Energy Conservation Standards in 2017 and to use EPA's SNAP Program approved HC refrigerants. Hydrocarbon refrigerants do not deplete the ozone layer and have very low contribution to global warming (ODP-0, GWP-3).

### LED Interior Lighting

The LED lighting system illuminates products for better visibility to increase grab-and-go sales.

### Digital Temperature Controller

External digital temperature control has an easily accessible panel to quickly adjust temperatures, which includes a defrost control.

### Energy Conserving Fan Control

Utilizing algorithmic air circulation for optimal temperature levels, our innovative fan control system conserves energy by at least 15% and increases compressor life by up to 30%.

### Double Pane Heated Glass Doors with Low-E glass

### Hot Gas Condensate System

Condensate system surfaces have been specially treated to resist corrosion and prevents the overflow of condensate water (except TGM-15SDH/23SDH-N6).

### Additional Features

- Anti-corrosion coated evaporator standard
- Door locks standard
- Color: white, black
- 3 year parts and labor warranty with additional 4 year compressor warranty

See page 67 for Full View Swing Door Refrigerator models and specifications.





## Full View Swing Door Freezers Glass Door Merchandisers

### Self-Cleaning Condenser

A fine mesh filter catches dust, while rotating brushes run daily to move dirt away from the condenser. This revolutionary device comes at no additional cost.

### Only at Turbo Air, Only in the World

Turbo Air's 2 & 3 Glass Door Freezers are powered by 115V. Not only is our 115V simple and easy to plug in and operate, it also saves customers over \$1,000 in electrical line installation for 220V powered glass door freezers.

### Hydrocarbon Refrigerants

With innovative and eco-friendly technology, Turbo Air brings you hydrocarbon refrigerators designed to meet DOE's Energy Conservation Standards in 2017 and to use EPA's SNAP Program approved HC refrigerants. Hydrocarbon refrigerants do not deplete the ozone layer and have very low contribution to global warming (ODP-0, GWP-3).

### Digital Temperature Controller

External digital temperature control has an easily accessible panel to quickly adjust temperatures, which includes a defrost control.

### LED Interior Lighting

The LED lighting system illuminates products for better visibility to increase grab-and-go sales.

### Triple Pane Heated Glass Doors with Low-E glass

Equipped with unique triple-pane heated glass doors which enhance energy efficiency by preventing heat transfers and minimizing condensation. Lightweight door construction reduces door maintenance, bushing wear, and facilitates smooth door opening.

### Energy Conserving Fan Control

Utilizing algorithmic air circulation for optimal temperature levels, our innovative fan control system conserves energy by at least 15% and increases compressor life by up to 30%.

### No electrical cabinet heater is needed

#### Additional Features

- Anti-corrosion coated evaporator standard
- Door locks standard
- Color: white, black
- 3 year parts and labor warranty with additional 4 year compressor warranty

See page 67 for Full View Swing Door Freezer models and specifications.



FROZEN

BBQ Chicken Tacos

Cauliflower Mac

Urban Pie

8 Chicken Pot Pies

BBQ Chicken Tacos

Cauliflower Mac

Urban Pie

8 Chicken Pot Pies

8 Chicken Pot Pies

8 Chicken Pot Pies

8 Chicken Pot Pies

8 Chicken Pot Pies

8 Chicken Pot Pies



## Solid & Glass Door Back Bars

# Underbar Equipment



### Self-Cleaning Condenser

A fine mesh filter catches dust, while rotating brushes run daily to move dirt away from the condenser. This revolutionary device comes at no additional cost.

### Hydrocarbon Refrigerants

With innovative and eco-friendly technology, Turbo Air brings you hydrocarbon refrigerators designed to meet DOE's Energy Conservation Standards in 2017 and to use EPA's SNAP Program approved HC refrigerants. Hydrocarbon refrigerants do not deplete the ozone layer and have very low contribution to global warming (ODP-0, GWP-3).

### LED Interior Lighting

The LED lighting system illuminates products for better visibility.

### Digital Temperature Controller

External digital temperature control has an easily accessible panel to quickly adjust temperatures, which includes a defrost control.

### Double pane glass doors with Low-E glass (SG Models)

### Stainless Steel Countertop & Interior

The exterior of the cabinet is constructed with heavy gauge reinforced stainless steel countertop and wear-resistant black vinyl coated galvanized steel. The interior is painted galvanized steel with reinforced stainless steel floor. Turbo Air Back Bar model guarantees the utmost in cleanliness and long product life. It also adds a touch of style to the most refined setting.

### Forced Air Cooling System

Fast cooling and balanced temperature throughout the cabinet.

### Side Mount Compressor Unit

With compressors positioned on the side of the unit, our refrigerators can now be serviced without being moved. Our innovative, front breathing feature also allows this model to be highly efficient in narrow spaces.

### Additional Features

- Anti-corrosion coated evaporator standard
- Door locks standard
- Color: black, stainless steel
- 3 year parts and labor warranty with additional 4 year compressor warranty

See page 67-68 for Back Bar models and specifications.



## Beer Dispensers Underbar Equipment

### Self-Cleaning Condenser

A fine mesh filter catches dust, while rotating brushes run daily to move dirt away from the condenser. This revolutionary device comes at no additional cost.

### Hydrocarbon Refrigerants

With innovative and eco-friendly technology, Turbo Air brings you hydrocarbon refrigerators designed to meet DOE's Energy Conservation Standards in 2017 and to use EPA's SNAP Program approved HC refrigerants. Hydrocarbon refrigerants do not deplete the ozone layer and have very low contribution to global warming (ODP-0, GWP-3).

### Stainless Steel Countertop & Interior

Stainless steel cabinet construction Super Deluxe (SD) models boast a stainless steel exterior (except gavanized steel back and bottom). SB models have an attractive wear-resistant black vinyl exterior. Heavy gauge stainless steel countertop is perfect for sanitation and durability.

### Forced air cooling system

Fast cooling and balanced temperature throughout the cabinet.

### Digital Temperature Controller

External digital temperature control has an easily accessible panel to quickly adjust temperatures, which includes a defrost control.

### Side Mount Compressor Unit

With compressors positioned on the side of the unit, our refrigerators can now be serviced without being moved. Our innovative, front breathing feature also allows this model to be highly efficient in narrow spaces.

### Club Top (TCB) models provide easy access to the interior area

#### Additional Features

- Anti-corrosion coated evaporator standard
- Double faucet beer tower standard
- Door locks standard
- Color: black, stainless steel
- 3 year parts and labor warranty with additional 4 year compressor warranty

See page 68 for Beer Dispenser models and specifications.



## Open Display Merchandisers

### Horizontal / Slim Profiles - Glass Side Panel



Model	CU./FT.	#of Bottom shelves	HP	AMPS	Watt (W)	Crated Weight (lbs.)	L x D x H* (inches)
TOM-30SW(B, S)-N	4.7	3	1/3	6.7	770.5	338	28 1/8 x 34 5/8 x 41 1/2
TOM-40SW(B, S)-N	6.7	3	3/4	6.9	793.5	440	39 x 34 5/8 x 41 1/2
TOM-50SW(B, S)-N	8.9	3	3/4	6.9	793.5	481	50 3/4 x 34 5/8 x 41 1/2
TOM-60SW(B, S)-N	11.2	3	3/4 x 2	11.3	1299.5	535	63 1/4 x 34 5/8 x 41 1/2
TOM-75SW(B, S)-N	13.5	3	3/4 x 2	11.3	1299.5	680	75 5/8 x 34 5/8 x 41 1/2

\* Height does not include for bolt height.

### Horizontal / Slim Profiles - Solid Side Panel



Model	CU./FT.	#of Bottom shelves	HP	AMPS	Watt (W)	Crated Weight (lbs.)	L x D x H* (inches)
TOM-30SB-SP(-A)-N	4.7	3	1/3	6.7	770.5	338	28 x 34 5/8 x 41 1/2
TOM-40SB-SP(-A)-N	6.7	3	3/4	6.9	793.5	440	39 x 34 5/8 x 41 1/2
TOM-50SB-SP(-A)-N	8.9	3	3/4	6.9	793.5	481	50 3/4 x 34 5/8 x 41 1/2
TOM-60SB-SP(-A)-N	11.2	3	3/4 x 2	11.3	1299.5	535	63 1/4 x 34 5/8 x 41 1/2
TOM-75SB-SP(-A)-N	13.5	3	3/4 x 2	11.3	1299.5	680	75 5/8 x 34 5/8 x 41 1/2

SP-N: stainless steel interior, SP-A-N: black coated interior \* Height does not include for bolt height.

### Horizontal / Low Profiles - Glass Side Panel



Model	CU./FT.	#of Shelves	HP	AMPS	Watt (W)	Crated Weight (lbs.)	L x D x H* (inches)
TOM-30LW(B, S)-N	5.1	1	1/3	6.7	770.5	340	28 x 34 5/8 x 45 7/8
TOM-40LW(B, S)-N	7.4	1	3/4	6.9	793.5	450	39 x 34 5/8 x 45 7/8
TOM-50LW(B, S)-N	9.8	1	3/4	6.9	793.5	505	50 7/8 x 34 5/8 x 45 7/8
TOM-60LW(B, S)-N	12.3	1	3/4 x 2	11.3	1299.5	583	63 1/4 x 34 5/8 x 45 7/8
TOM-75LW(B, S)-N	14.8	2	3/4 x 2	11.3	1299.5	710	75 5/8 x 34 5/8 x 45 7/8

\* Height does not include for bolt height.

### Horizontal / Low Profiles - Solid Side Panel



Model	CU./FT.	#of Shelves	HP	AMPS	Watt (W)	Crated Weight (lbs.)	L x D x H* (inches)
TOM-30LB-SP(-A)-N	5.1	1	1/3	6.7	770.5	340	28 x 34 5/8 x 45 7/8
TOM-40LB-SP(-A)-N	7.4	1	3/4	6.9	793.5	450	39 x 34 5/8 x 45 7/8
TOM-50LB-SP(-A)-N	9.8	1	3/4	6.9	793.5	505	50 7/8 x 34 5/8 x 45 7/8
TOM-60LB-SP(-A)-N	12.3	1	3/4 x 2	11.3	1299.5	583	63 1/4 x 34 5/8 x 45 7/8
TOM-75LB-SP(-A)-N	14.8	2	3/4 x 2	11.3	1299.5	710	75 5/8 x 34 5/8 x 45 7/8

SP-N: stainless steel interior, SP-A-N: black coated interior \* Height does not include for bolt height.

Design and specifications subject to change without notice. Most updated spec sheets are available at [www.turboairinc.com](http://www.turboairinc.com).

## Top Display Dry Cases (Optional for TOM-S/L-N)



Model	CU./FT.	# of Doors	#of Shelves	Crated Weight (lbs.)	L x D x H (inches)
TOMD-30HW(B, S)	2.1	2	1	53	28 x 12 <sup>1</sup> / <sub>4</sub> x 17 <sup>3</sup> / <sub>4</sub>
TOMD-40HW(B, S)	3	2	1	70	39 x 12 <sup>1</sup> / <sub>4</sub> x 17 <sup>3</sup> / <sub>4</sub>
TOMD-50HW(B, S)	4	2	1	87	50 <sup>3</sup> / <sub>4</sub> x 12 <sup>1</sup> / <sub>4</sub> x 17 <sup>3</sup> / <sub>4</sub>
TOMD-60HW(B, S)	5	3	1	110	63 <sup>1</sup> / <sub>4</sub> x 12 <sup>1</sup> / <sub>4</sub> x 17 <sup>3</sup> / <sub>4</sub>
TOMD-75HW(B, S)	6.1	3	1	128	75 <sup>5</sup> / <sub>8</sub> x 12 <sup>1</sup> / <sub>4</sub> x 17 <sup>3</sup> / <sub>4</sub>
TOMD-30LW(B, S)	1.5	2	-	38	28 x 12 <sup>1</sup> / <sub>4</sub> x 13 <sup>1</sup> / <sub>4</sub>
TOMD-40LW(B, S)	2.1	2	-	51	39 x 12 <sup>1</sup> / <sub>4</sub> x 13 <sup>1</sup> / <sub>4</sub>
TOMD-50LW(B, S)	2.9	2	-	65	50 <sup>3</sup> / <sub>4</sub> x 12 <sup>1</sup> / <sub>4</sub> x 13 <sup>1</sup> / <sub>4</sub>
TOMD-60LW(B, S)	3.6	3	-	80	63 <sup>1</sup> / <sub>4</sub> x 12 <sup>1</sup> / <sub>4</sub> x 13 <sup>1</sup> / <sub>4</sub>
TOMD-75LW(B, S)	4.3	3	-	95	75 <sup>5</sup> / <sub>8</sub> x 12 <sup>1</sup> / <sub>4</sub> x 13 <sup>1</sup> / <sub>4</sub>

## Combination Cases / Curved Front



Model	CU./FT. (Top / Bottom)	#of Shelves	HP	AMPS	Watt (W)	Crated Weight (lbs.)	L x D x H* (inches)
TOM-W-40SB-N	4.2 / 6.4	2	3/4	6.9	793.5	535	38 <sup>7</sup> / <sub>8</sub> x 34 x 56 <sup>3</sup> / <sub>8</sub>
TOM-W-50SB-N	5.6 / 8.5	2	3/4	6.9	793.5	639	50 <sup>7</sup> / <sub>8</sub> x 34 x 56 <sup>3</sup> / <sub>8</sub>
TOM-W-60SB-N	7.0 / 10.7	2	3/4 x 2	11.3	1299.5	730	62 <sup>7</sup> / <sub>8</sub> x 34 x 56 <sup>3</sup> / <sub>8</sub>

White color option available (8 week lead time) \* Height does not include for bolt height.

## Combination Cases / European Straight Front



Model	CU./FT. (Top / Bottom)	#of Shelves	HP	AMPS	Watt (W)	Crated Weight (lbs.)	L x D x H* (inches)
TOM-W-40SB-UF-N	4.2 / 6.4	2	3/4	6.9	793.5	535	38 <sup>7</sup> / <sub>8</sub> x 34 x 56 <sup>3</sup> / <sub>8</sub>
TOM-W-50SB-UF-N	5.6 / 8.5	2	3/4	6.9	793.5	639	50 <sup>7</sup> / <sub>8</sub> x 34 x 56 <sup>3</sup> / <sub>8</sub>
TOM-W-60SB-UF-N	7.0 / 10.7	2	3/4 x 2	11.3	1299.5	730	62 <sup>7</sup> / <sub>8</sub> x 34 x 56 <sup>3</sup> / <sub>8</sub>

White color option available (8 week lead time) \* Height does not include for bolt height.

Design and specifications subject to change without notice. Most updated spec sheets are available at [www.turboairinc.com](http://www.turboairinc.com).



## Open Display Merchandisers

### Horizontal / European Straight



Model	CU./FT.	#of Shelves	HP	AMPS	Watt (W)	Crated Weight (lbs.)	L x D x H* (inches)
TOM-36L-UF-W(B, S)-1S-N	4.6	-	3/4 x 2	11.3	1299.5	412	34 3/4 x 33 x 37 3/4
TOM-36L-UF-W(B, S)-2S-N	7.5	1	3/4 x 2	11.3	1299.5	447	34 3/4 x 33 x 44 1/4
TOM-36L-UF-W(B, S)-3S-N	11.1	2	3/4 x 2	11.3	1299.5	482	34 3/4 x 33 x 52 1/2
TOM-48L-UF-W(B, S)-1S-N	6.3	-	3/4 x 2	13.6	1564	504	46 3/4 x 33 x 37 3/4
TOM-48L-UF-W(B, S)-2S-N	10.2	1	3/4 x 2	13.6	1564	528	46 3/4 x 33 x 44 1/4
TOM-48L-UF-W(B, S)-3S-N	15.2	2	3/4 x 2	13.6	1564	550	46 3/4 x 33 x 52 1/2
TOM-60L-UF-W(B, S)-1S-N	8	-	3/4 x 2	15.0	1725	548	58 3/4 x 33 x 37 3/4
TOM-60L-UF-W(B, S)-2S-N	13	1	3/4 x 2	15.0	1725	584	58 3/4 x 33 x 44 1/4
TOM-60L-UF-W(B, S)-3S-N	19.3	2	3/4 x 2	15.0	1725	631	58 3/4 x 33 x 52 1/2
TOM-72L-UF-W(B, S)-1S-N	9.7	-	3/4 x 4	13.0	2860	769	70 3/4 x 33 x 37 3/4
TOM-72L-UF-W(B, S)-2S-N	15.8	2	3/4 x 4	13.0	2860	805	70 3/4 x 33 x 44 1/4
TOM-72L-UF-W(B, S)-3S-N	23.4	4	3/4 x 4	13.0	2860	854	70 3/4 x 33 x 52 1/2

\* Height does not include for bolt height.

### Horizontal / Drop-In Type European Straight



Model	CU./FT.	#of Shelves	HP	AMPS	Watt (W)	Crated Weight (lbs.)	L x D x H* (inches)
TOM-36L-UF-W(B, S)-1SI-N	4.6	-	3/4 x 2	11.3	1299.5	412	35 7/8 x 33 x 37 3/4
TOM-36L-UF-W(B, S)-2SI-N	7.5	1	3/4 x 2	11.3	1299.5	447	35 7/8 x 33 x 44 1/4
TOM-36L-UF-W(B, S)-3SI-N	11.1	2	3/4 x 2	11.3	1299.5	482	35 7/8 x 33 x 52 1/2
TOM-48L-UF-W(B, S)-1SI-N	6.3	-	3/4 x 2	13.6	1564	504	47 7/8 x 33 x 37 3/4
TOM-48L-UF-W(B, S)-2SI-N	10.2	1	3/4 x 2	13.6	1564	528	47 7/8 x 33 x 44 1/4
TOM-48L-UF-W(B, S)-3SI-N	15.2	2	3/4 x 2	13.6	1564	550	47 7/8 x 33 x 52 1/2
TOM-60L-UF-W(B, S)-1SI-N	8	-	3/4 x 2	15.0	1725	548	59 7/8 x 33 x 37 3/4
TOM-60L-UF-W(B, S)-2SI-N	13	1	3/4 x 2	15.0	1725	584	59 7/8 x 33 x 44 1/4
TOM-60L-UF-W(B, S)-3SI-N	19.3	2	3/4 x 2	15.0	1725	631	59 7/8 x 33 x 52 1/2
TOM-72L-UF-W(B, S)-1SI-N	9.7	-	3/4 x 4	13.0	2860	769	71 7/8 x 33 x 37 3/4
TOM-72L-UF-W(B, S)-2SI-N	15.8	2	3/4 x 4	13.0	2860	805	71 7/8 x 33 x 44 1/4
TOM-72L-UF-W(B, S)-3SI-N	23.4	4	3/4 x 4	13.0	2860	854	71 7/8 x 33 x 52 1/2

\* Height does not include for bolt height.

Design and specifications subject to change without notice. Most updated spec sheets are available at [www.turboairinc.com](http://www.turboairinc.com).

## Horizontal / European Straight - Sliding Rear Glass doors



Model	CU./FT.	#of Shelves	HP	AMPS	Watt (W)	Crated Weight (lbs.)	L x D x H* (inches)
TOM-36L-UFD-W(B, S)-1S-N	4.6	-	3/4 x 2	11.3	1299.5	421	34 3/4 x 33 3/4 x 37 3/4
TOM-36L-UFD-W(B, S)-2S-N	7.5	1	3/4 x 2	11.3	1299.5	461	34 3/4 x 33 3/4 x 44 1/4
TOM-36L-UFD-W(B, S)-3S-N	11.1	2	3/4 x 2	11.3	1299.5	499	34 3/4 x 33 3/4 x 52 1/2
TOM-48L-UFD-W(B, S)-1S-N	6.3	-	3/4 x 2	13.6	1564	520	46 3/4 x 33 3/4 x 37 3/4
TOM-48L-UFD-W(B, S)-2S-N	10.2	1	3/4 x 2	13.6	1564	547	46 3/4 x 33 3/4 x 44 1/4
TOM-48L-UFD-W(B, S)-3S-N	15.2	2	3/4 x 2	13.6	1564	574	46 3/4 x 33 3/4 x 52 1/2
TOM-60L-UFD-W(B, S)-1S-N	8	-	3/4 x 2	15.0	1725	566	58 3/4 x 33 3/4 x 37 3/4
TOM-60L-UFD-W(B, S)-2S-N	13	1	3/4 x 2	15.0	1725	606	58 3/4 x 33 3/4 x 44 1/4
TOM-60L-UFD-W(B, S)-3S-N	19.3	2	3/4 x 2	15.0	1725	661	58 3/4 x 33 3/4 x 52 1/2
TOM-72L-UFD-W(B, S)-1S-N	9.7	-	3/4 x 4	13.0	2860	793	70 3/4 x 33 3/4 x 37 3/4
TOM-72L-UFD-W(B, S)-2S-N	15.8	2	3/4 x 4	13.0	2860	835	70 3/4 x 33 3/4 x 44 1/4
TOM-72L-UFD-W(B, S)-3S-N	23.4	4	3/4 x 4	13.0	2860	893	70 3/4 x 33 3/4 x 52 1/2

\* Height does not include for bolt height.

## Horizontal / Drop-In Type European Straight - Sliding Rear Glass doors



Model	CU./FT.	#of Shelves	HP	AMPS	Watt (W)	Crated Weight (lbs.)	L x D x H* (inches)
TOM-36L-UFD-W(B, S)-1SI-N	4.6	-	3/4 x 2	11.3	1299.5	421	35 7/8 x 33 3/4 x 37 3/4
TOM-36L-UFD-W(B, S)-2SI-N	7.5	1	3/4 x 2	11.3	1299.5	461	35 7/8 x 33 3/4 x 44 1/4
TOM-36L-UFD-W(B, S)-3SI-N	11.1	2	3/4 x 2	11.3	1299.5	499	35 7/8 x 33 3/4 x 52 1/2
TOM-48L-UFD-W(B, S)-1SI-N	6.3	-	3/4 x 2	13.6	1564	520	47 7/8 x 33 3/4 x 37 3/4
TOM-48L-UFD-W(B, S)-2SI-N	10.2	1	3/4 x 2	13.6	1564	547	47 7/8 x 33 3/4 x 44 1/4
TOM-48L-UFD-W(B, S)-3SI-N	15.2	2	3/4 x 2	13.6	1564	574	47 7/8 x 33 3/4 x 52 1/2
TOM-60L-UFD-W(B, S)-1SI-N	8	-	3/4 x 2	15.0	1725	566	58 3/4 x 33 3/4 x 37 3/4
TOM-60L-UFD-W(B, S)-2SI-N	13	1	3/4 x 2	15.0	1725	606	58 3/4 x 33 3/4 x 44 1/4
TOM-60L-UFD-W(B, S)-3SI-N	19.3	2	3/4 x 2	15.0	1725	661	58 3/4 x 33 3/4 x 52 1/2
TOM-72L-UFD-W(B, S)-1SI-N	9.7	-	3/4 x 4	13.0	2860	793	71 7/8 x 33 3/4 x 37 3/4
TOM-72L-UFD-W(B, S)-2SI-N	15.8	2	3/4 x 4	13.0	2860	835	71 7/8 x 33 3/4 x 44 1/4
TOM-72L-UFD-W(B, S)-3SI-N	23.4	4	3/4 x 4	13.0	2860	893	71 7/8 x 33 3/4 x 52 1/2

\* Height does not include for bolt height.

Design and specifications subject to change without notice. Most updated spec sheets are available at [www.turboairinc.com](http://www.turboairinc.com).



## Open Display Merchandisers

### Horizontal / Drop-In Type European Straight



Model	CU./FT.	HP	AMPS	Watt (W)	Crated Weight (lbs.)	L x D x H* (inches)
TOM-36UC-W(B, S)-N	5	3/4	7.5	862.5	368	36 1/4 x 32 1/4 x 32 1/2
TOM-48UC-W(B, S)-N	6.8	3/4	7.5	862.5	423	48 1/4 x 32 1/4 x 32 1/2
TOM-60UC-W(B, S)-N	8.6	3/4	7.5	862.5	482	60 1/4 x 32 1/4 x 32 1/2
TOM-72UC-W(B, S)-N	10.4	3/4 x 2	15.0	1725	630	72 1/4 x 32 1/4 x 32 1/2

\* Height does not include for bolt height.

### Vertical / Slim Profiles



Model	CU./FT.	#of Shelves	HP	AMPS	Watt (W)	Crated Weight (lbs.)	L x D x H* (inches)
TOM20-60N-W(B, S)	3.2	2	3/4	5.9	678.5	330	19 3/4 x 25 5/8 x 57 5/8
TOM20-75N-W(B, S)	4.8	4	3/4	6.9	793.5	440	19 3/4 x 25 5/8 x 73 5/8

\* Height does not include for caster height.

### Vertical / Medium Heights - Glass Side Panel



Model	CU./FT.	#of Shelves	HP	AMPS	Watt (W)	Crated Weight (lbs.)	L x D x H* (inches)
TOM-40MW(B, S)-N	8.3	3	3/4 x 2	15.5	1782.5	521	39 x 28 x 60 1/4
TOM-50MW(B, S)-N	11.1	3	3/4 x 2	15.5	1782.5	567	50 7/8 x 28 x 60 1/4

\* Height does not include for bolt height.

### Vertical / Medium Heights - Solid Side Panel



Model	CU./FT.	#of Shelves	HP	AMPS	Watt (W)	Crated Weight (lbs.)	L x D x H* (inches)
TOM-40MB-SP(-A)-N	8.3	3	3/4 x 2	15.5	1782.5	521	39 x 28 x 60 1/4
TOM-50MB-SP(-A)-N	11.1	3	3/4 x 2	15.5	1782.5	567	50 7/8 x 28 x 60 1/4

SP-N: stainless steel interior, SP-A-N: black coated interior \* Height does not include for bolt height.

Design and specifications subject to change without notice. Most updated spec sheets are available at [www.turboairinc.com](http://www.turboairinc.com).

### Vertical / Full Heights - Glass Side Panel



Model	CU./FT.	#of Shelves	HP	AMPS	Watt (W)	Crated Weight (lbs.)	L x D x H* (inches)
TOM-40W(B, S)-N	12.5	4	3/4 x 2	15.5	1782.5	642	39 x 28 x 78
TOM-50W(B, S)-N	16.5	4	3/4 x 2	15.5	1782.5	733	50 7/8 x 28 x 78

\* Height does not include for bolt height.

### Vertical / Full Heights - Solid Side Panel



Model	CU./FT.	#of Shelves	HP	AMPS	Watt (W)	Crated Weight (lbs.)	L x D x H* (inches)
TOM-40B-SP(-A)-N	12.5	4	3/4 x 2	15.5	1782.5	642	39 x 28 x 78
TOM-50B-SP(-A)-N	16.5	4	3/4 x 2	15.5	1782.5	733	50 7/8 x 28 x 78

SP-N: stainless steel interior, SP-A-N: black coated interior \* Height does not include for bolt height.

### Vertical / Extra Deep - Glass Side Panel



Model	CU./FT.	#of Shelves	HP	AMPS	Watt (W)	Crated Weight (lbs.)	L x D* x H† (inches)
TOM-36DXB(S)-N	11	4	3/4 x 2	15.5	1782.5	631	35 5/8 x 35 7/8 x 78 3/8
TOM-48DXB(S)-N	14.9	4	3/4 x 2	15.5	1782.5	727	47 5/8 x 35 7/8 x 78 3/8
TOM-60DXB(S)-N	18.9	4	3/4 x 2	15.5	1782.5	822	59 5/8 x 35 7/8 x 78 3/8
TOM-72DXB(S)-N	22	8	3/4 x 4	18	3960	1064	68 3/4 x 35 7/8 x 78 3/8

\* Depth does not include for safety bar and rear bumper. † Height does not include for bolt height.

### Vertical / Extra Deep - Solid Side Panel



Model	CU./FT.	#of Shelves	HP	AMPS	Watt (W)	Crated Weight (lbs.)	L x D* x H† (inches)
TOM-36DXB-SP(-A)-N	11	4	3/4 x 2	15.5	1782.5	631	35 5/8 x 35 7/8 x 78 3/8
TOM-48DXB-SP(-A)-N	14.9	4	3/4 x 2	15.5	1782.5	727	47 5/8 x 35 7/8 x 78 3/8
TOM-60DXB-SP(-A)-N	18.9	4	3/4 x 2	15.5	1782.5	822	59 5/8 x 35 7/8 x 78 3/8
TOM-72DXB-SP(-A)-N	22	8	3/4 x 4	18	3960	1064	68 3/4 x 35 7/8 x 78 3/8

SP-N: stainless steel interior, SP-A-N: black coated interior

\* Depth does not include for safety bar and rear bumper. † Height does not include for bolt height.

Design and specifications subject to change without notice. Most updated spec sheets are available at [www.turboairinc.com](http://www.turboairinc.com).



## Open Display Merchandisers

### Vertical / Air Curtains



Model	CU./FT.	#of Shelves	HP	AMPS	Watt (W)	Crated Weight (lbs.)	L x D x H* (inches)
TOM-36EB(S)-N	17.7	4	3/4 x 2	15.5	1782.5	648	36 x 30 <sup>3</sup> / <sub>4</sub> x 80 <sup>1</sup> / <sub>2</sub>
TOM-48EB(S)-N	24.1	4	3/4 x 2	15.5	1782.5	743	48 x 30 <sup>3</sup> / <sub>4</sub> x 80 <sup>1</sup> / <sub>2</sub>
TOM-60EB(S)-N	30.6	4	3/4 x 2	15.5	1782.5	842	60 x 30 <sup>3</sup> / <sub>4</sub> x 80 <sup>1</sup> / <sub>2</sub>
TOM-72EB(S)-N	37.1	8	3/4 x 4	18	3960	941	72 x 30 <sup>3</sup> / <sub>4</sub> x 80 <sup>1</sup> / <sub>2</sub>
TOM-96EB(S)-N	48.3	8	3/4 x 4	18	3960	1190	92 <sup>7</sup> / <sub>8</sub> x 30 <sup>3</sup> / <sub>4</sub> x 80 <sup>1</sup> / <sub>2</sub>

\* Height does not include for bolt height. Slim Profile (26" depth) Medium & Full height models available on [www.turboairinc.com](http://www.turboairinc.com).

### Island Display Cases



Model	CU./FT.	# of Tiers	HP	AMPS	Watt (W)	Crated Weight (lbs.)	L x D x H* (inches)
TIOM-20RSRB(S)-N	19.2	3	3/4 x 5	20.14	4430.8	1230	48 x 67 <sup>7</sup> / <sub>8</sub> x 65
TIOM-36RSRB(S)-N	25.6	3	3/4 x 6	24.17	5317.4	1512	48 x 84 <sup>1</sup> / <sub>8</sub> x 65
TIOM-48RSRB(S)-N	28.8	3	3/4 x 6	24.17	5317.4	1642	48 x 96 x 65
TIOM-36RSB(S)-N	20	3	3/4 x 4	16.43	3614.6	1225	48 x 61 <sup>7</sup> / <sub>8</sub> x 65
TIOM-48RSB(S)-N	23.2	3	3/4 x 4	16.43	3614.6	1333	48 x 73 <sup>5</sup> / <sub>8</sub> x 65
TIOM-48RRB(S)-N	11.2	3	3/4 x 4	15.48	3405.6	853	48 x 48 x 65
TIOM-48RB(S)-N	5.6	3	3/4 x 2	7.74	1702.8	562	48 x 25 <sup>1</sup> / <sub>2</sub> x 65

\* Height does not include for bolt height.

### Island Display Cases



Model	CU./FT.	#of Shelves	HP	AMPS	Watt (W)	Crated Weight (lbs.)	L x D x H* (inches)
TIOM-36SB(S)-N	14.4	6	3/4 x 2	8.7	1914	630	39 <sup>3</sup> / <sub>8</sub> x 48 x 65
TIOM-48SB(S)-N	17.6	6	3/4 x 2	8.7	1914	747	51 <sup>1</sup> / <sub>4</sub> x 48 x 65

\* Height does not include for bolt height.

Design and specifications subject to change without notice. Most updated spec sheets are available at [www.turboairinc.com](http://www.turboairinc.com).

## Security Cover

### SC - Fabric Cover



Model	Available Model	L x D x H (inches)	Shipping Weight (lbs.)
SC-40(B)	TOM-40W(B, S)-N	36 1/8 x 13 1/4 x 52 3/4	14
SC-50(B)	TOM-50W(B, S)-N	48 x 13 1/4 x 52 3/4	15
SC-36-DXB	TOM-36DXB(S)-N	32 3/4 x 13 1/4 x 51 3/4	10
SC-48-DXB	TOM-48DXB(S)-N	44 3/4 x 13 1/4 x 51 3/4	12
SC-60-DXB	TOM-60DXB(S)-N	56 3/4 x 13 1/4 x 51 3/4	13
SC-72-DXB	TOM-72DXB(S)-N	66 x 13 1/4 x 51 3/4	15
SC-36-E(B)	TOM-36EB(S)-N	32 3/4 x 13 1/4 x 51 3/4	8
SC-48-E(B)	TOM-48EB(S)-N	44 3/4 x 13 1/4 x 51 3/4	9
SC-60-E(B)	TOM-60EB(S)-N	56 3/4 x 13 1/4 x 51 3/4	11
SC-72-E(B)	TOM-72EB(S)-N	68 3/4 x 13 1/4 x 51 3/4	13
SC-96-E(B)	TOM-96EB(S)-N	89 1/2 x 13 1/4 x 51 3/4	15
SC-40MW(B)	TOM-40MW(B, S)-N	36 1/8 x 13 1/4 x 30 1/2	12
SC-50MW(B)	TOM-50MW(B, S)-N	48 x 13 1/4 x 30 1/2	14

### SCS - Stainless Steel



Model	Available Model	L x D x H (inches)	Shipping Weight (lbs.)
SCS-40	TOM-40W(B, S)-N	36 1/4 x 35/8 x 50 1/2	16
SCS-50	TOM-50W(B, S)-N	48 x 35/8 x 50 1/2	20
SCS-36-DX	TOM-36DXB(S)-N	33 x 2 1/8 x 48	14
SCS-48-DX	TOM-48DXB(S)-N	44 3/4 x 2 1/8 x 48	18
SCS-60-DX	TOM-60DXB(S)-N	28 3/8 x 2 1/8 x 48 (2)	26
SCS-72-DX	TOM-72DXB(S)-N	33 x 2 1/8 x 48 (2)	27
SCS-36-E	TOM-36EB(S)-N	32 1/2 x 2 1/4 x 49 3/8	16
SCS-48-E	TOM-48EB(S)-N	44 3/8 x 2 1/4 x 49 3/8	21
SCS-60-E	TOM-60EB(S)-N	28 1/8 x 2 1/4 x 49 3/8 (2)	30
SCS-72-E	TOM-72EB(S)-N	34 x 2 1/4 x 49 3/8 (2)	31
SCS-96-E	TOM-96EB(S)-N	44 3/8 x 2 1/4 x 49 3/8 (2)	42
SCS-40-M	TOM-40MW(B, S)-N	36 1/8 x 1 1/2 x 34 1/8	12
SCS-50-M	TOM-50MW(B, S)-N	48 x 1 1/2 x 34 1/8	16

### SCM - Hard Plastic



Model	Available Model	L x D x H (inches)	Shipping Weight (lbs.)
SCM-40(B)	TOM-40W(B, S)-N	38 x 11 1/2 x 64	85
SCM-50(B)	TOM-50W(B, S)-N	49 1/2 x 11 1/2 x 64	95
SCM-36-DXB	TOM-36DXB(S)-N	33 1/4 x 11 1/4 x 62 3/4	81
SCM-48-DXB	TOM-48DXB(S)-N	45 1/4 x 11 1/4 x 62 3/4	92
SCM-60-DXB	TOM-60DXB(S)-N	57 1/4 x 11 1/4 x 62 3/4	103
SCM-72-DXB	TOM-72DXB(S)-N	66 3/8 x 11 1/4 x 62 1/8	106
SCM-36-E(B)	TOM-36EB(S)-N	32 7/8 x 11 1/4 x 64 1/4	81
SCM-48-E(B)	TOM-48EB(S)-N	44 7/8 x 11 1/4 x 64 1/4	92
SCM-60-E(B)	TOM-60EB(S)-N	56 7/8 x 11 1/4 x 64 1/4	103
SCM-72-E(B)	TOM-72EB(S)-N	67 7/8 x 11 1/4 x 64 1/4	106

### SCW - Wire Type



Model	Available Model	L x D x H (inches)	Shipping Weight (lbs.)
SCW-30LB	TOM-30LW(B, S)-N	23 1/8 x 23 5/8 x 20	12
SCW-40LB	TOM-40LW(B, S)-N	34 1/8 x 23 5/8 x 20	16
SCW-50LB	TOM-50LW(B, S)-N	46 x 23 5/8 x 20	21
SCW-60LB	TOM-60LW(B, S)-N	29 x 23 5/8 x 20 (2)	27
SCW-75LB	TOM-75LW(B, S)-N	35 1/4 x 23 5/8 x 20 (2)	32
SCW-30SB	TOM-30SW(B, S)-N	23 1/8 x 23 5/8 x 15 1/2	11
SCW-40SB	TOM-40SW(B, S)-N	34 1/8 x 23 5/8 x 15 1/2	16
SCW-50SB	TOM-50SW(B, S)-N	46 x 23 5/8 x 15 1/2	20
SCW-60SB	TOM-60SW(B, S)-N	29 x 23 5/8 x 15 1/2 (2)	26
SCW-75SB	TOM-75SW(B, S)-N	35 1/4 x 23 5/8 x 15 1/2 (2)	31

### Night Curtain Cover - Clear vinyl\*



Model	Available Model	L x D x H (inches)	Shipping Weight (lbs.)
NCT-30-W(B)	TOM-30L/SW(B, S)-N	27 1/4 x 2 x 2 1/2	10
NCT-40-W(B)	TOM-40L/SW(B, S)-N	38 1/4 x 2 x 2 1/2	12
NCT-50-W(B)	TOM-50L/SW(B, S)-N	50 x 2 x 2 1/2	14

Model	Available Model	L x D x H (inches)	Shipping Weight (lbs.)
NCT-60-W(B)	TOM-60L/SW(B, S)-N	60 x 2 x 2 1/2	18
NCT-75-W(B)	TOM-75L/SW(B, S)-N	75 x 2 x 2 1/2	22

\* Night cover can not be used in conjunction with a TOMD dry case.

## Bakery Display Cases

### Curved Glass Bakery Cases

Refrigerated / Dry / Refrigerated & Dry Case Combination



Model	CU./FT.	#of Shelves	HP	AMPS	Watt (W)	Crated Weight (lbs.)	L x D x H* (inches)
TCGB-36-W(B)-N	11.8	2	1/3	7.5	862.5	537	36 1/2 x 34 1/4 x 49 7/8
TCGB-48-W(B)-N	15.6	2	1/3	7.5	862.5	630	48 1/2 x 34 1/4 x 49 7/8
TCGB-60-W(B)-N	19.4	2	3/4	8.6	989	754	60 1/2 x 34 1/4 x 49 7/8
TCGB-72-W(B)-N	23.2	2	3/4	8.6	989	857	72 1/2 x 34 1/4 x 49 7/8
TCGB-36DR-W(B)	11.8	2	-	0.4	46	532	36 1/2 x 34 1/4 x 49 7/8
TCGB-48DR-W(B)	15.6	2	-	0.6	69	614	48 1/2 x 34 1/4 x 49 7/8
TCGB-60DR-W(B)	19.4	2	-	0.7	80.5	714	60 1/2 x 34 1/4 x 49 7/8
TCGB-72DR-W(B)	23.2	2	-	0.7	80.5	678	72 1/2 x 34 1/4 x 49 7/8
TCGB-60CO-W(B)-N	10.3 x 2	4	1/3	7.5	862.5	721	60 1/2 x 34 1/4 x 49 7/8
TCGB-72CO-W(B)-N	12.2 x 2	4	1/3	7.5	862.5	839	72 1/2 x 34 1/4 x 49 7/8

\* Height does not include for bolt height.

### European Straight Front Bakery Cases

Refrigerated / Dry / Refrigerated & Dry Case Combination / Freezer



Model	CU./FT.	#of Shelves	HP	AMPS	Watt (W)	Crated Weight (lbs.)	L x D x H* (inches)
TCGB-36UF-W(B, S)-N	11.8	2	1/3	7.5	862.5	537	36 1/2 x 34 1/4 x 50 1/8
TCGB-48UF-W(B, S)-N	15.6	2	1/3	7.5	862.5	630	48 1/2 x 34 1/4 x 50 1/8
TCGB-60UF-W(B, S)-N	19.4	2	3/4	8.6	989	754	60 1/2 x 34 1/4 x 50 1/8
TCGB-72UF-W(B, S)-N	23.2	2	3/4	8.6	989	857	72 1/2 x 34 1/4 x 50 1/8
TCGB-36UF-DR-W(B, S)	11.8	2	-	0.4	46	471	36 1/2 x 34 1/4 x 50 1/8
TCGB-48UF-DR-W(B, S)	15.6	2	-	0.6	69	564	48 1/2 x 34 1/4 x 50 1/8
TCGB-60UF-DR-W(B, S)	19.4	2	-	0.7	80.5	677	60 1/2 x 34 1/4 x 50 1/8
TCGB-72UF-DR-W(B, S)	23.2	2	-	0.7	80.5	780	72 1/2 x 34 1/4 x 50 1/8
TCGB-60UF-CO-W(B, S)-N	10.3 x 2	4	1/3	7.5	862.5	721	60 1/2 x 34 1/4 x 50 1/8
TCGB-72UF-CO-W(B, S)-N	12.2 x 2	4	1/3	7.5	862.5	839	72 1/2 x 34 1/4 x 50 1/8
TCGBF-50S-N	13.97	4	1HP x 2	7	1610	788	49 5/8 x 33 1/2 x 52 1/4

\* Height does not include for bolt height.

### Bakery Cases



Model	CU./FT.	#of Shelves	HP	AMPS	Watt (W)	Crated Weight (lbs.)	L x D x H* (inches)
TBP36-46NN-W(B, S)	9	1	1/3	6	690	494	35 3/8 x 27 1/2 x 44
TBP48-46NN-W(B, S)	12.4	1	1/3	6.3	724.5	582	47 1/4 x 27 1/2 x 44
TBP60-46NN-W(B, S)	15.7	1	3/4	6.5	747.5	665	59 x 27 1/2 x 44
TBP36-54NN-W(B, S)	12.5	2	1/3	6	690	550	35 3/8 x 27 1/2 x 51 7/8
TBP48-54NN-W(B, S)	17.2	2	3/4	6.5	747.5	643	47 1/4 x 27 1/2 x 51 7/8
TBP60-54NN-W(B, S)	21.8	2	3/4	6.8	782	741	59 x 27 1/2 x 51 7/8

\* Height does not include for caster height.

Design and specifications subject to change without notice. Most updated spec sheets are available at [www.turboairinc.com](http://www.turboairinc.com).

## Bakery Cases - Front Glass Opening



Model	CU./FT.	#of Shelves	HP	AMPS	Watt (W)	Crated Weight (lbs.)	L x D x H* (inches)
TBP36-46FN-W(B, S)	9	1	1/3	6.3	724.5	504	35 3/8 x 27 1/2 x 44
TBP48-46FN-W(B, S)	12.4	1	1/3	6.8	782	597	47 1/4 x 27 1/2 x 44
TBP60-46FN-W(B, S)	15.7	1	3/4	7.3	839.5	686	59 x 27 1/2 x 44
TBP36-54FN-W(B, S)	12.5	2	1/3	7	805	550	35 3/8 x 27 1/2 x 51 7/8
TBP48-54FN-W(B, S)	17.2	2	3/4	8.2	943	643	47 1/4 x 27 1/2 x 51 7/8
TBP60-54FN-W(B, S)	21.8	2	3/4	8.7	1000.5	741	59 x 27 1/2 x 51 7/8

\* Height does not include for caster height.

## Drop-In Type Bakery Cases



Model	CU./FT.	#of Shelves	HP	AMPS	Watt (W)	Crated Weight (lbs.)	L x D x H* (inches)
TBP36-46FDN	9	1	1/3	6.3	724.5	504	37 x 29 3/4 x 44
TBP48-46FDN	12.4	1	1/3	6.8	782	597	48 7/8 x 29 3/4 x 44
TBP60-46FDN	15.7	1	3/4	7.3	839.5	686	60 5/8 x 29 3/4 x 44
TBP36-54FDN	12.5	2	1/3	7	805	550	37 x 29 3/4 x 51 7/8
TBP48-54FDN	17.2	2	3/4	8.2	943	643	48 7/8 x 29 3/4 x 51 7/8
TBP60-54FDN	21.8	2	3/4	8.7	1000.5	741	60 5/8 x 29 3/4 x 51 7/8

\* Height does not include for caster height.

## Sandwich & Cheese Cases



Model	CU./FT.	#of bottom shelf	HP	AMPS	Watt (W)	Crated Weight (lbs.)	L x D x H* (inches)
TOS-30NN-W(B, S)	2.4	1	1/3	8	920	464	29 7/8 x 35 3/8 x 30 7/8
TOS-40NN-W(B, S)	3.3	1	1/3	8	920	552	40 x 35 3/8 x 30 7/8
TOS-50NN-W(B, S)	4.2	1	1/3	8	920	640	50 x 35 3/8 x 30 7/8
TOS-30NN-D-W(B, S)	2.4	1	1/3	8	920	481	29 7/8 x 35 3/8 x 40
TOS-40NN-D-W(B, S)	3.3	1	1/3	8	920	572	40 x 35 3/8 x 40
TOS-50NN-D-W(B, S)	4.2	1	1/3	8	920	664	50 x 35 3/8 x 40
TOS-30PN-W(B, S)	4.5	1	1/3	8	920	456	29 7/8 x 35 3/8 x 34
TOS-40PN-W(B, S)	6.3	1	1/3	8	920	543	40 x 35 3/8 x 34
TOS-50PN-W(B, S)	8.1	1	1/3	8	920	625	50 x 35 3/8 x 34

\* Height does not include for caster height.

Design and specifications subject to change without notice. Most updated spec sheets are available at [www.turboairinc.com](http://www.turboairinc.com).



## Curved Glass Deli Display Cases



Model	CU./FT.	#of Shelves	HP	AMPS	Watt (W)	Crated Weight (lbs.)	L x D x H* (inches)
TCDD-36H-W(B)-N	12.1	2	1/3	7	805	496	36 1/2 x 30 x 49 7/8
TCDD-48H-W(B)-N	16.2	2	1/3	7	805	569	48 1/2 x 30 x 49 7/8
TCDD-72H-W(B)-N	24.7	2	3/4	7.8	897	777	72 1/2 x 30 x 49 7/8
TCDD-96H-W(B)-N	33.2	4	3/4	7.8	897	957	96 1/2 x 30 x 49 7/8

\* Height does not include for bolt height.

## Glass Door Merchandisers

### Swing Door Refrigerators



Model	CU./FT.	Bottle Capacity (12oz)	#of Shelves	HP	AMPS	Watt (W)	Crated Weight (lbs.)	L x D* x H† (inches)
TGM-5SD: -N6	4.45	80	2	1/8	1.4	161	183	25 x 23 1/4 x 30 1/2
TGM-7SD: -N6	6.2	136	3	1/8	1.4	161	202	25 x 23 1/4 x 38 1/8
TGM-10SD: -N6	8.12	236	3	1/5	1.9	218.5	241	25 3/4 x 23 1/4 x 54 3/8
TGM-12SD: -N6	10.19	236 (295 w/ add shelf)	3	1/5	1.9	218.5	257	25 3/4 x 23 1/4 x 63
TGM-15SD: -N6	14.43	315 (378 w/ add shelf)	4	1/5	2.1	241.5	281	26 3/8 x 24 3/4 x 75 5/8
TGM-20SD: -N6	16.01	355 (426 w/ add shelf)	4	1/5	2.4	276	292	27 x 26 3/8 x 77
TGM-23SD: -N6	19.4	405 (486 w/ add shelf)	4	1/5	2.7	310.5	325	27 x 30 1/4 x 77
TGM-35SD: -N	29.06	690 (828 w/ add shelf)	8	1/3	3.3	379.5	450	39 1/2 x 31 7/8 x 77
TGM-47SD: -N	41.71	900 (1080 w/ add shelf)	8	1/3	3.4	391	510	51 1/8 x 31 1/2 x 77
TGM-72SD: -N	67.98	1475 (1770 w/ add shelf)	12	1/2	7.9	908.5	732	78 x 31 1/2 x 77

\* Depth does not include for door handles. † Height does not include for leg height.

### Swing Door Freezers



Model	CU./FT.	#of Shelves	HP	AMPS/LRA	Watt (W)	Crated Weight (lbs.)	L x D* x H† (inches)
TGF-5SD: -N	4.26	2	1/3	2.3	264.5	195	25 x 23 1/4 x 30 1/2
TGF-10SD: -N	7.92	3	1/3	2.6	299	267	25 3/4 x 23 1/4 x 54 3/8
TGF-15SD: -N	13.2	4	1/2	5.6	644	313	26 3/8 x 24 3/4 x 75 5/8
TGF-23SD: -N	17.99	4	1/2	6	690	365	27 x 30 1/4 x 77
TGF-35SD: -N	28.44	8	3/4	8.1 / 98	931.5	519	39 1/2 x 31 7/8 x 77
TGF-47SD: -N	39	8	3/4	10.4 / 49	1196	590	51 1/8 x 31 7/8 x 77
TGF-72SD: -N	60.43	12	1/2 x 2	15.7 / 34	1805.5	915	78 x 31 7/8 x 77

\* Depth does not include for door handles. † Height does not include for leg height.

Design and specifications subject to change without notice. Most updated spec sheets are available at [www.turboairinc.com](http://www.turboairinc.com).

## Glass Door Merchandisers

### Full View Swing Door Refrigerators



Model	CU./FT.	Bottle Capacity (12 oz)	#of Shelves	HP	AMPS	Watt (W)	Crated Weight (lbs.)	L x D* x H† (inches)
TGM-15SDH:-N6	14.7	315 (378 w/ add shelf)	4	1/5	2.1	241.5	281	26 3/8 x 24 3/4 x 75 5/8
TGM-23SDH:-N6	19.02	405 (486 w/ add shelf)	4	1/5	2.2	253	325	27 x 30 1/4 x 77
TGM-35SDH:-N	31.7	690 (828 w/ add shelf)	8	1/3	3.3	379.5	450	39 1/2 x 31 7/8 x 77
TGM-47SDH:-N	44.22	900 (1080 w/ add shelf)	8	2/5	6.6	759	510	51 1/8 x 31 1/2 x 77
TGM-72SDH:-N	70.44	1475 (1770 w/ add shelf)	12	1/2	7.8	897	732	78 x 31 1/2 x 77

\* Depth does not include for door handles. † Height does not include for leg height.

### Full View Swing Door Freezers



Model	CU./FT.	#of Shelves	HP	AMPS / LRA	Watt (W)	Crated Weight (lbs.)	L x D* x H† (inches)
TGF-23SDH:-N	17.94	4	1/2	5.8	667	365	27 x 29 7/8 x 77
TGF-35SDH:-N	30.94	8	2/3	6.8 / 98	782	519	39 1/2 x 31 7/8 x 77
TGF-47SDH:-N	42.12	8	3/4	9.1 / 49	1046.5	590	51 1/8 x 31 1/2 x 77
TGF-72SDH:-N	62.2	12	2/3 x 2	13.6 / 34	1564	915	78 x 31 1/2 x 77

\* Depth does not include for door handles. † Height does not include for leg height.

## Underbar Equipment

### Back Bars - Solid Doors & Glass Doors



Model	CU./FT.	Capacity (1/2 Barrels)	# of Shelves (Sub Shelves)	HP	AMPS	Watt (W)	Crated Weight (lbs.)	L x D* x H† (inches)
TBB-1SBD-N6	7.76	1	2	1/8	1.3	149.5	212	23 5/8 x 31 3/8 x 37 3/4
TBB-2SBD-N6	19	2	4 (2)	1/5	1.7	195.5	298	58 3/4 x 27 5/8 x 37 1/8
TBB-3SBD-N6	23	3	4 (2)	1/5	1.9	218.5	320	69 x 27 5/8 x 37 1/8
TBB-4SBD-N	36.47	4	6 (2)	1/3	2.9	333.5	479	90 3/8 x 27 5/8 x 37 1/8
TBB-2SGD-N	19	2	4 (2)	1/3	2.8	322	331	58 3/4 x 28 5/8 x 37 1/8
TBB-3SGD-N	23	3	4 (2)	1/3	2.8	322	375	69 x 28 5/8 x 37 1/8
TBB-4SGD-N	36.47	4	6 (2)	1/3	3.3	379.5	545	90 3/8 x 28 5/8 x 37 1/8

\* Depth does not include for door handles and rear spacers. † Height does not include for caster height.

Design and specifications subject to change without notice. Most updated spec sheets are available at [www.turboairinc.com](http://www.turboairinc.com).

## Underbar Equipment

### Narrow Back bars - Solid Doors & Glass Doors



Model	CU./FT.	Capacity (1/2 Barrels)	# of Shelves	HP	AMPS	Watt (W)	Crated Weight (lbs.)	L x D* x H† (inches)
TBB-24-48SBD-N6	12.2	-	4	1/5	1.8	207	253	49 1/8 x 24 7/8 x 35 3/8
TBB-24-60SBD-N6	16.46	2	4	1/5	2	230	279	61 1/8 x 24 7/8 x 35 3/8
TBB-24-72SBD-N6	20.62	3	6	1/5	2	230	333	73 1/8 x 24 7/8 x 35 3/8
TBB-24-48SGD-N	12.2	-	4	1/3	2.6	299	264	49 1/8 x 25 x 35 3/8
TBB-24-60SGD-N	16.46	2	4	1/3	2.9	333.5	307	61 1/8 x 25 x 35 3/8
TBB-24-72SGD-N	20.62	3	6	1/3	2.9	333.5	339	73 1/8 x 25 x 35 3/8

\* Depth does not include for door handles and rear spacers. † Height does not include for caster height.

### Beer Dispensers



Model	CU./FT.	Capacity (1/2 Barrels)	HP	AMPS	Watt (W)	Crated Weight (lbs.)	L x D* x H† (inches)
TBD-1SDD-N6	7.76	1	1/8	1.1	126.5	185	23 5/8 x 31 3/8 x 37 3/4
TBD-1SBD-N6	7.76	1	1/8	1.1	126.5	185	23 5/8 x 31 3/8 x 37 3/4
TBD-2SDD-N6	20.9	2	1/5	1.9	218.5	298	58 3/4 x 27 5/8 x 37 1/8
TBD-2SBD-N6	20.9	2	1/5	1.9	218.5	298	58 3/4 x 27 5/8 x 37 1/8
TBD-3SDD-N	25.4	2	1/3	2.5	287.5	320	69 x 27 5/8 x 37 1/8
TBD-3SBD-N	25.4	2	1/3	2.5	287.5	320	69 x 27 5/8 x 37 1/8
TBD-4SDD-N	36.47	2	1/3	2.7	310.5	443	90 3/8 x 27 5/8 x 37 1/8
TBD-4SBD-N	36.47	2	1/3	2.7	310.5	443	90 3/8 x 27 5/8 x 37 1/8

\* Depth does not include for door handles and rear spacers. † Height does not include for caster and draft arm height.

### Club Top Beer Dispensers



Model	CU./FT.	Capacity (1/2 Barrels)	HP	AMPS	Watt (W)	Crated Weight (lbs.)	L x D* x H† (inches)
TCB-2SDD-N6	20.9	2	1/5	1.3	149.5	357	58 7/8 x 27 5/8 x 38 5/8
TCB-2SBD-N6	20.9	2	1/5	1.3	149.5	357	58 7/8 x 27 5/8 x 38 5/8
TCB-3SDD-N6	25.4	3	1/5	2.3	264.5	378	69 1/8 x 27 5/8 x 38 5/8
TCB-3SBD-N6	25.4	3	1/5	2.3	264.5	378	69 1/8 x 27 5/8 x 38 5/8
TCB-4SDD-N	36.47	4	1/3	2.6	299	448	90 3/8 x 27 5/8 x 38 5/8
TCB-4SBD-N	36.47	4	1/3	2.6	299	448	90 3/8 x 27 5/8 x 38 5/8

\* Depth does not include for door handles and rear spacers. † Height does not include for caster and draft arm height.

Design and specifications subject to change without notice. Most updated spec sheets are available at [www.turboairinc.com](http://www.turboairinc.com).

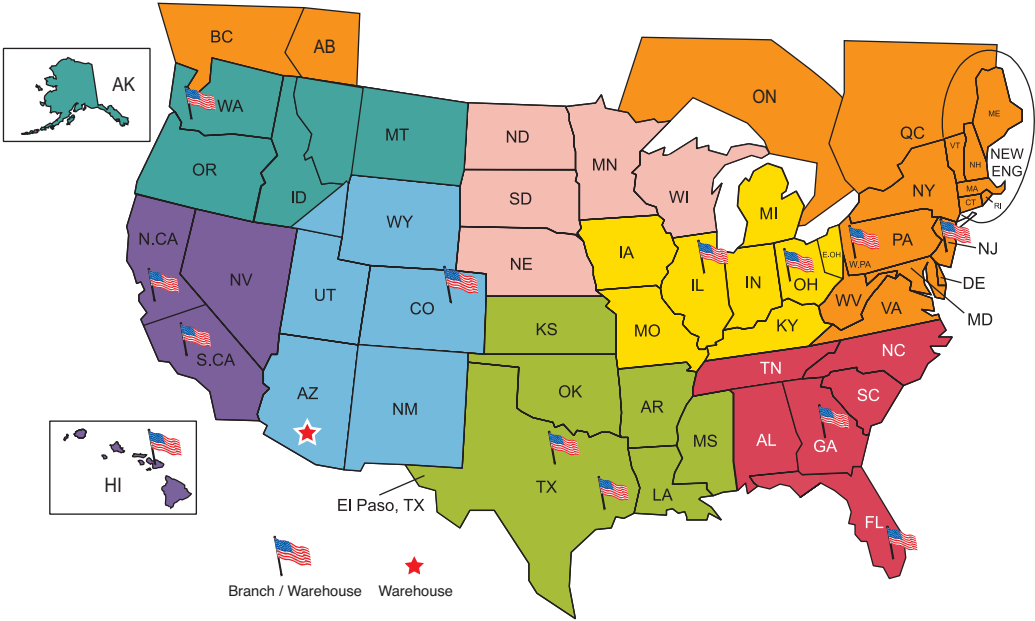








# Sales Territory Map



**Keith Kim** 310-505-7420  
**Christopher Kim** 925-719-8808  
 (Northern CA & Nevada)

**Keith Kim** 310-505-7420

**Sun Kim** 213-309-2788  
**John McDowell & Martha Cano**  
 602-276-4969

**Joshua Ryoo** 562-577-2099

**Chris Bae** 630-442-4786

**Chris Bae** 630-442-4786

**Andrew Kim** 562-307-4355

**Phillip Han** 562-305-3837  
**Ro Doyle & Brian Mahoney**  
 800-243-8366  
**Owen Freeman & Harry Pardee**  
 978-281-2700  
**Blake Sharkey** 412-343-9541  
**Michael DiDaniels** 610-592-8615

**Mike Andrus**  
 National Account

214-770-3126

**Rick Blinson**  
 National Account

678-814-2201

**D. J. Kourie**  
 National Account

330-447-8411

**Suzanne Painter-Supplee**  
 National Account

602-418-6725

**Carlos Fuentes**  
 National Account

310-745-9321

REFRIGERATOR MANUFACTURER  
***Turbo air***

**800-627-0032**

**[www.turboairinc.com](http://www.turboairinc.com)**



Self-Cleaning Condenser Video



**TURBO AIR**  
**REFRIGERATION REINVENTED**