

**BEAUTY & BEAST<sup>®</sup>**  
DISPLAY MERCHANDISERS

**GRAB-N-GO**



## My 52-Year Journey with Refrigeration

At 13 years old, I began my part-time job to pay for school, which started my 52-year career in refrigeration. I found that I had an aptitude for the work, and more importantly, I enjoyed it. It didn't take long until it wasn't just about raising money for school. I kept at it, and I dropped out of college my freshman year to start my own refrigeration business. I invested my last \$30, taking a risk that paid off. It grew rapidly, and when I was 25 I founded South Korea's first plant to mass-produce commercial refrigerators.

In 1985, I emigrated from South Korea to Los Angeles, where I continued to follow my passions. I opened my business selling and repairing refrigerators. I also constructed restaurants and grocery stores, finding the refrigeration systems and layouts that best fit their needs. Through my combined experiences, I became an expert on the environments which refrigerators operated in and all my competitor's products. As I built my expertise, I noticed that there was little-to-no technological advancement. The products had remained the same over several decades, across all major manufacturers. I knew there was a better way.

I founded Turbo Air with innovation and consumer convenience at the forefront. Turbo Air was the first company to apply digital control in commercial refrigerators, a mere 24 years ago, and now it's the industry standard. I pioneered the use of automatic fans, temperature control and external monitoring, and indoor illumination for under-counter and salad/sandwich units. I work towards improving Turbo Air products every day, and I continue to lead the charge with my patented Self-Cleaning Condenser. This revolutionary device marks the end of the 100-year-old problem, rooted in ill-maintained condensers.

My innovation goes beyond technology, as I am the trailblazer of innovation in customer service. One of the many precedents I have set in this industry is direct delivery to dealers, with 13 warehouse locations nationwide. Multiple locations ensure damage free delivery within 1-2 days. Also, I utilize in-house technicians, who complete 95% of service calls within 3 business days. I am also the first to implement the MSP (minimum sales price) program in the refrigeration industry to alleviate excessive competition among dealers. I am always looking to improve, not only the products but your experience with customer service.

It has been 52 wonderful years, and my journey still continues.

Sincerely,

A handwritten signature in cursive script that reads "Brian S. Kim". The ink is dark and the signature is fluid, with a large initial 'B' and a stylized 'S'.

Brian S. Kim  
Chief Engineer & CEO



TOM-48UC-B-N

## Contents

Over 500+ Open Display Merchandiser models available

### Open Display Merchandisers

#### Horizontal Cases

Slim / Low Profiles  
European Straight  
Drop-In Type European Straight

#### Combination Cases

Curved / European Straight

#### Vertical Cases

Slim Profiles  
Medium / Full Heights  
Extra Deep  
Air Curtains

### Island Display Cases

### Bakery & Deli Display Cases

Curved Glass Bakery Cases  
European Straight Bakery Cases  
Bakery Display Cases  
Drop-In Type Bakery Display Cases  
Sandwich & Cheese Cases  
Curved Glass Deli Cases

### Glass Door Merchandisers

Swing Door Refrigerators & Freezers  
Full View Swing Door Refrigerators & Freezers  
Jumbo Full View Swing Door Refrigerators & Freezers

### Underbar Equipment

Back Bars  
Beer Dispensers

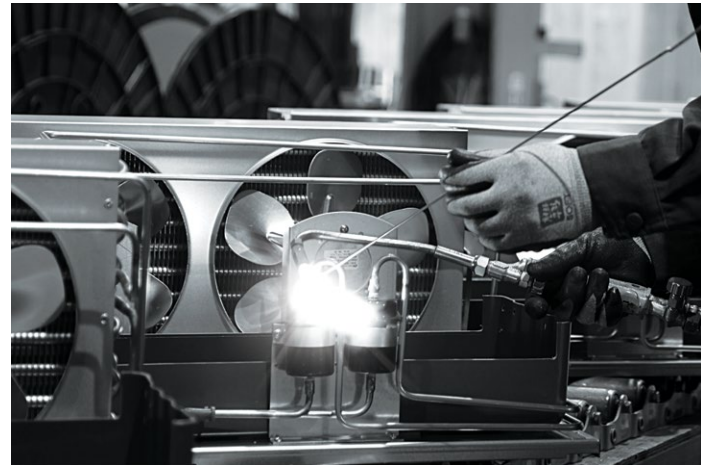
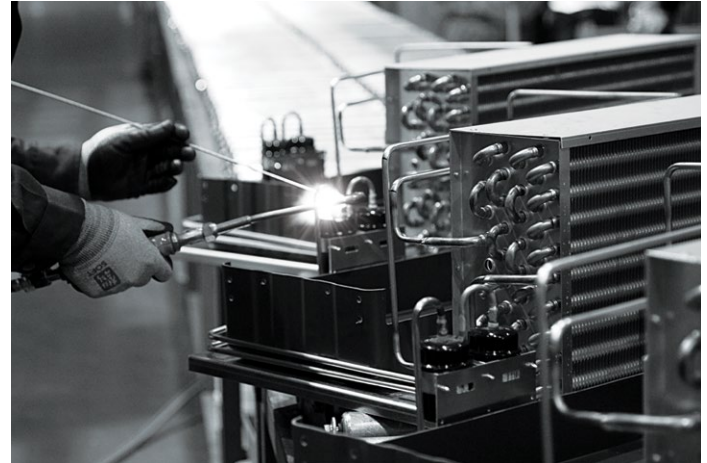




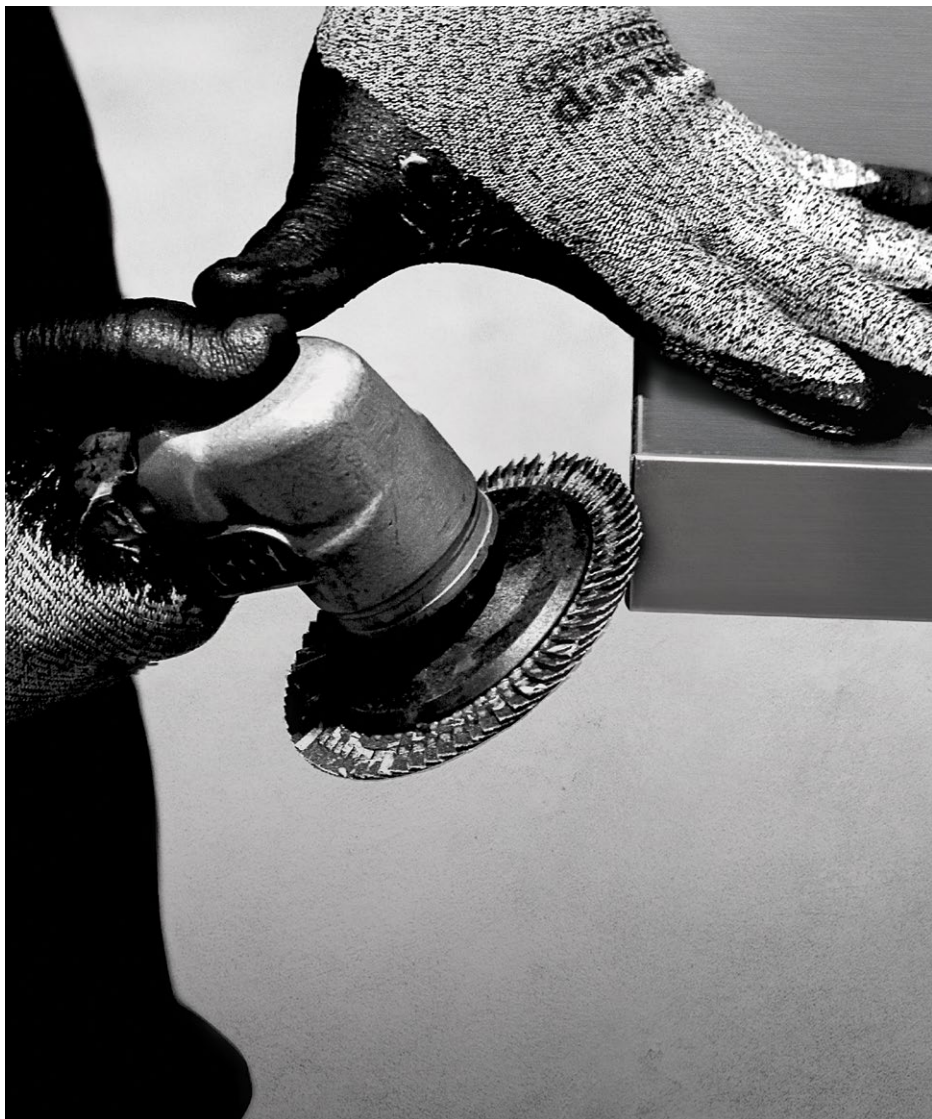
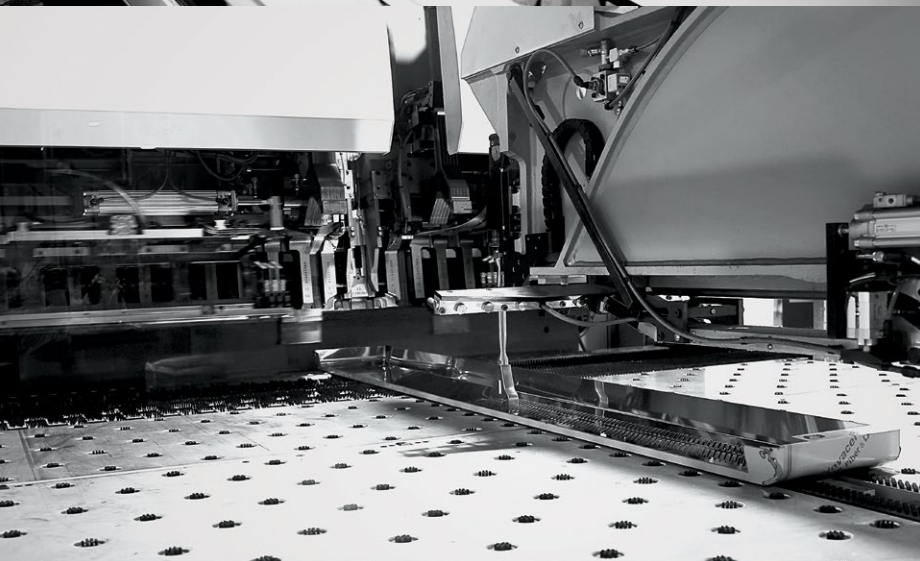
## Workmanship

# One's hands are the greatest tool

From laser cutting, welding, and bending, we utilize many types of robots for production but ultimately, the most important tool is our hands. Every unit is not complete until it has been thoroughly inspected and perfected by hand.









TOM-50W-N

## Self-Cleaning Condenser Only at Turbo Air

Turbo Air is the trailblazer of the refrigeration industry. We have solved the age-old problem: dirty condensers causing the majority of service calls. To solve this problem, we invented the Self-Cleaning Condenser that automatically cleans the dust off the condenser daily. This revolutionary device is available on all our display cases, glass door merchandisers and underbar units at no additional cost. Our Self-Cleaning Condenser has been independently researched by Frontier Energy. Per their confirmation report, the Self-Cleaning Condenser is as effective as a fully, unblocked condenser coil saving 400 kWh/year, 25% first year, 50% 2nd & 3rd years in operational savings.







# Features & Benefits

## Self-Cleaning Condenser

The accumulation of dust in the condenser causes the failure or breakdown of refrigerators. Refrigerators run normally until they reach a certain level of accumulation. At some point, when they are over the limit, their performance drops quickly resulting in damage to, or disposal of the stored products in refrigerators. The self-cleaning condenser device keeps the condenser clean and prevents system failure by automatically brushing daily.

## Hydrocarbon Refrigerants

With innovative and eco-friendly technology, Turbo Air brings you hydrocarbon refrigerators designed to meet DOE's Energy Conservation Standards in 2017 and to use EPA's SNAP Program approved HC refrigerants. Hydrocarbon refrigerants do not deplete the ozone layer and have very low contribution to global warming (ODP-0, GWP-3).

## Modern Design

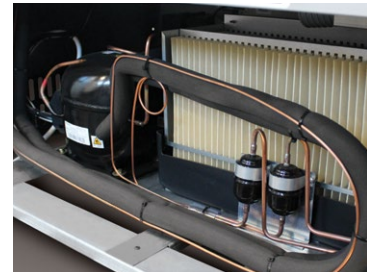
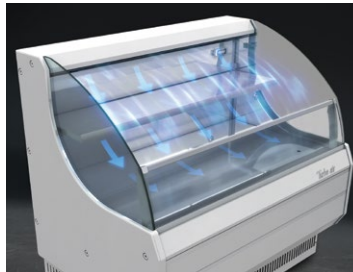
The contemporary look is designed to be eye-catching, increasing impulse sales of any stocked product. A safety reinforced tempered glass front shield and side walls allow high visibility with easy accessibility. Most of the units come with color options of classic black, chic white, and sleek stainless steel to complement the interior of any grocery store, deli, cafe, hotel, and more.

## Self-Contained System

Our self-contained system makes it easy to service and perform maintenance. Installation is a simple "plug and play".

## Efficient Airflow

Our unique refrigeration technology allows cold air to flow throughout, which maintains an equal temperature from top to bottom.







*Turbo air*



TOM-50SW-N

## Slim / Low Profiles

# Horizontal Open Display Cases

### Self-Cleaning Condenser

A fine mesh filter catches dust, while rotating brushes run daily to move dirt away from the condenser. This revolutionary device comes at no additional cost.

### Hydrocarbon Refrigerants

With innovative and eco-friendly technology, Turbo Air brings you hydrocarbon refrigerators designed to meet DOE's Energy Conservation Standards in 2017 and to use EPA's SNAP Program approved HC refrigerants. Hydrocarbon refrigerants do not deplete the ozone layer and have very low contribution to global warming (ODP-0, GWP-3).

### LED Interior Lighting

The LED lighting system illuminates products for better visibility to increase grab-and-go sales.

### Security Cover

Energy saving night curtain (optional)  
Security Cover available (optional)  
See page 66 for Security Cover models and specifications.

### Digital Temperature Controller

External digital temperature control has an easily accessible panel to quickly adjust temperatures, which includes a defrost control.

### Top Display Dry Cases

Top display dry cases available in all sizes (optional)  
See page 59 for Top Display Dry Case models and specifications.

### Glass & Solid Side Panel

TOM-S/L-N: Glass side panel  
TOM-S/L-SP(-A)-N: Solid side panel

### Additional Features

- Standard back-guard improves airflow
- Stainless steel solid shelves standard (TOM-S-N: stair shelves)
- Perforated interior back wall & open top for improved air flow
- Foamed with polyurethane, high-density cell insulation (CFC free)
- Front air intake and rear air discharge
- Color: white, black, stainless steel
- 2 year parts and labor warranty with additional 3 year compressor warranty

See page 58 for Slim / Low Profile-Horizontal models and specifications.







## European Straight Horizontal Open Display Cases

### Self-Cleaning Condenser

A fine mesh filter catches dust, while rotating brushes run daily to move dirt away from the condenser. This revolutionary device comes at no additional cost.

### LED Interior Lighting

The LED lighting system illuminates products for better visibility to increase grab-and-go sales.

### Digital Temperature Controller

External digital temperature control has an easily accessible panel to quickly adjust temperatures, which includes a defrost control.

### Designed to enhance impulsive sales

Ideal for eye-catching displays and convenient access with fast service in high traffic area.

### Bottom stainless steel solid shelf and glass shelves standard

### Sliding Rear Glass Doors (UFD models)

Sliding rear doors make it easily accessible and convenient to arrange products. These doors are built to withstand constant sliding open and close.

### Security Cover

Energy saving night curtain standard

### Additional Features

- Standard back-guard improves airflow
- Perforated interior back wall & open top for improved air flow
- Foamed with polyurethane, high-density cell insulation (CFC free)
- Front air intake and rear air discharge
- Color: white, black, stainless steel
- 2 year parts and labor warranty with additional 3 year compressor warranty

See page 60-61 for European Straight-Horizontal models and specifications.



## Drop-In Type European Straight (Glass side panel) Horizontal Open Display Cases

### Self-Cleaning Condenser

A fine mesh filter catches dust, while rotating brushes run daily to move dirt away from the condenser. This revolutionary device comes at no additional cost.

### LED Interior Lighting

The LED lighting system illuminates products for better visibility to increase grab-and-go sales. Each shelf is equipped with LED lights to reduce shadows.

### Digital Temperature Controller

External digital temperature control has an easily accessible panel to quickly adjust temperatures, which includes a defrost control.

### Designed to enhance impulsive sales

Ideal for eye-catching displays and convenient access with fast service in high traffic area.

### Security Cover

Energy saving night curtain standard

### Sliding Rear Glass Doors (UFD models)

Sliding rear doors make it easily accessible and convenient to arrange products. These doors are built to withstand constant sliding open and close.

### Additional Features

- Standard back-guard improves airflow
- Bottom stainless steel solid shelf and glass shelves standard
- Perforated interior back wall & open top for improved air flow
- Foamed with polyurethane, high-density cell insulation (CFC free)
- Front air intake and rear air discharge
- Color: white, black, stainless steel
- 2 year parts and labor warranty with additional 3 year compressor warranty

See page 60-61 for Drop-In Type European Straight (Glass side panel) models and specifications.







## Drop-In Type European Straight (Solid side panel) Horizontal Open Display Cases

### Self-Cleaning Condenser

A fine mesh filter catches dust, while rotating brushes run daily to move dirt away from the condenser. This revolutionary device comes at no additional cost.

### LED Interior Lighting

The LED lighting system illuminates products for better visibility to increase grab-and-go sales.

### Digital Temperature Controller

External digital temperature control has an easily accessible panel to quickly adjust temperatures, which includes a defrost control.

### Designed to enhance impulsive sales

Ideal for eye-catching displays and convenient access with fast service in high traffic area.

### Security Cover

Energy saving night curtain standard

### Additional Features

- Stainless steel interior standard including back wall and deck pans
- Standard back-guard improves airflow
- Perforated interior back wall & open top for improved air flow
- Foamed with polyurethane, high-density cell insulation (CFC free)
- Front air intake and rear air discharge
- Color: white, black, stainless steel
- 2 year parts and labor warranty with additional 3 year compressor warranty

See page 62 for Drop-In Type European Straight (Solid side panel) models and specifications.











## Curved / European Straight Horizontal Combination Open Display Cases

### Refrigerated Merchandiser + Refrigerated Top Display Case

### Self-Cleaning Condenser

A fine mesh filter catches dust, while rotating brushes run daily to move dirt away from the condenser. This revolutionary device comes at no additional cost.

### Hydrocarbon Refrigerants

With innovative and eco-friendly technology, Turbo Air brings you hydrocarbon refrigerators designed to meet DOE's Energy Conservation Standards in 2017 and to use EPA's SNAP Program approved HC refrigerants. Hydrocarbon refrigerants do not deplete the ozone layer and have very low contribution to global warming (ODP-0, GWP-3).

### LED Interior Lighting

The LED lighting system illuminates products for better visibility to increase grab-and-go sales.

### Digital Temperature Controller

External digital temperature control has an easily accessible panel to quickly adjust temperatures, which includes a defrost control.

### Designed to enhance impulsive sales

Ideal for eye-catching displays and convenient access with fast service in high traffic area.

### Additional Features

- Stainless steel interior standard including back wall and deck pans
- Standard back-guard improves airflow
- Stainless steel stair shelves standard
- Perforated interior back wall & top for improved air flow
- Foamed with polyurethane, high-density cell insulation (CFC free)
- Front air intake and rear air discharge
- Color: black, white (8 week lead time)
- 2 year parts and labor warranty with additional 3 year compressor warranty

See page 59 for Curved / European Straight Combination models and specifications.



## Slim Profiles

# Vertical Open Display Cases

### Self-Cleaning Condenser

A fine mesh filter catches dust, while rotating brushes run daily to move dirt away from the condenser. This revolutionary device comes at no additional cost.

### LED Interior Lighting

The LED lighting system illuminates products for better visibility to increase grab-and-go sales. Each shelf is equipped with LED lights to reduce shadows.

### Digital Temperature Controller

External digital temperature control has an easily accessible panel to quickly adjust temperatures, which includes a defrost control.

### Hydrocarbon Refrigerants

With innovative and eco-friendly technology, Turbo Air brings you hydrocarbon refrigerators designed to meet DOE's Energy Conservation Standards in 2017 and to use EPA's SNAP Program approved HC refrigerants. Hydrocarbon refrigerants do not deplete the ozone layer and have very low contribution to global warming (ODP-0, GWP-3).

### Designed to enhance impulsive sales

Ideal for eye-catching displays and convenient access with fast service in high traffic area.

### Tempered glass shelves standard (cantilever type)

### Standard back-guard improves airflow

#### Additional Features

- Perforated interior back wall & top for improved air flow
- Bottom glass shelf and stainless steel back wall with a mirror finish
- Foamed with polyurethane, high-density cell insulation (CFC free)
- Front air intake and rear air discharge
- Color: white (mirror finish), black (mirror finish) stainless steel (matte finish)
- 2 year parts and labor warranty with additional 3 year compressor warranty

See page 62 for Slim Profile-Vertical models and specifications.







TOM20-75N-B



## Medium / Full Heights Vertical Open Display Cases

### Self-Cleaning Condenser

A fine mesh filter catches dust, while rotating brushes run daily to move dirt away from the condenser. This revolutionary device comes at no additional cost.

### Hydrocarbon Refrigerants

With innovative and eco-friendly technology, Turbo Air brings you hydrocarbon refrigerators designed to meet DOE's Energy Conservation Standards in 2017 and to use EPA's SNAP Program approved HC refrigerants.

Hydrocarbon refrigerants do not deplete the ozone layer and have very low contribution to global warming (ODP-0, GWP-3).

### LED Interior Lighting

The LED lighting system illuminates products for better visibility to increase grab-and-go sales. Each shelf is equipped with LED lights to reduce shadows.

### Digital Temperature Controller

External digital temperature control has an easily accessible panel to quickly adjust temperatures, which includes a defrost control.

### Designed to enhance impulsive sales

Ideal for eye-catching displays and convenient access with fast service in high traffic area.

### Security Cover

Energy saving night curtain (standard)  
Security Cover available (optional)  
See page 66 for Security Cover models and specifications.

### Glass & Solid side panel

TOM-N / TOM-M-N: Glass side panel  
TOM-SP(-A)-N / TOM-M-SP(-A)-N: Solid side panel

### Additional Features

- Stainless steel solid shelves standard
- Standard back-guard improves airflow
- Perforated interior back wall & top for improved air flow
- Foamed with polyurethane, high-density cell insulation (CFC free)
- Front air intake and rear air discharge
- Color: white, black, stainless steel
- 2 year parts and labor warranty with additional 3 year compressor warranty

See page 62-63 for Medium / Full Height-Vertical models and specifications.









## Extra Deep Vertical Open Display Cases

### Self-Cleaning Condenser

A fine mesh filter catches dust, while rotating brushes run daily to move dirt away from the condenser. This revolutionary device comes at no additional cost.

### Hydrocarbon Refrigerants

With innovative and eco-friendly technology, Turbo Air brings you hydrocarbon refrigerators designed to meet DOE's Energy Conservation Standards in 2017 and to use EPA's SNAP Program approved HC refrigerants. Hydrocarbon refrigerants do not deplete the ozone layer and have very low contribution to global warming (ODP-0, GWP-3).

### LED Interior Lighting

The LED lighting system illuminates products for better visibility to increase grab-and-go sales. Each shelf is equipped with LED lights to reduce shadows.

### Digital Temperature Controller

External digital temperature control has an easily accessible panel to quickly adjust temperatures, which includes a defrost control.

### Designed to enhance impulsive sales

Ideal for eye-catching displays and convenient access with fast service in high traffic area.

### Security Cover

Energy saving night curtain (standard)  
Security Cover available (optional)  
See page 66 for Security Cover models and specifications.

### Glass & Solid side panel

TOM-DXB-N: Glass side panel  
TOM-DXB-SP(-A)-N: Solid side panel

### Additional Features

- Advertising panel
- Perforated interior back wall & top for improved air flow
- Foamed with polyurethane, high-density cell insulation (CFC free)
- Front air intake and rear air discharge
- Color: black, stainless steel
- 2 year parts and labor warranty with additional 3 year compressor warranty

See page 63 for Extra Deep-Vertical models and specifications.







*refreshments  
to go*

SOURCED FROM THE  
FARM, THE FIELD  
AND THE GREENHOUSE

NOUN: VER-DU-RAY:  
VEGETABLE



## Air Curtains

# Vertical Open Display Cases

### Self-Cleaning Condenser

A fine mesh filter catches dust, while rotating brushes run daily to move dirt away from the condenser. This revolutionary device comes at no additional cost.

### Hydrocarbon Refrigerants

With innovative and eco-friendly technology, Turbo Air brings you hydrocarbon refrigerators designed to meet DOE's Energy Conservation Standards in 2017 and to use EPA's SNAP Program approved HC refrigerants. Hydrocarbon refrigerants do not deplete the ozone layer and have very low contribution to global warming (ODP-0, GWP-3).

### LED Interior Lighting

The LED lighting system illuminates products for better visibility to increase grab-and-go sales. Each shelf is equipped with LED lights to reduce shadows.

### Digital Temperature Controller

External digital temperature control has an easily accessible panel to quickly adjust temperatures, which includes a defrost control.

### Designed to enhance impulsive sales

Ideal for eye-catching displays and convenient access with fast service in high traffic area.

### Security Cover

Energy saving night curtain (standard)  
Security Cover available (optional)  
See page 66 for Security Cover models and specifications.

### Additional Features

- Advertising panel
- Price tag channel (standard)
- Perforated interior back wall & top for improved air flow
- Foamed with polyurethane, high-density cell insulation (CFC free)
- Front air intake and rear air discharge
- Color: black, stainless steel
- 2 year parts and labor warranty with additional 3 year compressor warranty

See page 64 for Air Curtain-Vertical models and specifications.





## Island Display Cases

### Self-Cleaning Condenser

A fine mesh filter catches dust, while rotating brushes run daily to move dirt away from the condenser. This revolutionary device comes at no additional cost.

### Hydrocarbon Refrigerants

With innovative and eco-friendly technology, Turbo Air brings you hydrocarbon refrigerators designed to meet DOE's Energy Conservation Standards in 2017 and to use EPA's SNAP Program approved HC refrigerants. Hydrocarbon refrigerants do not deplete the ozone layer and have very low contribution to global warming (ODP-0, GWP-3).

### LED lighting on top panel and canopy

Brighter and longer lasting LED lights provide attractive enhanced illumination compared to fluorescents. It saves energy by producing less heat, while maximizing visibility in the display area.

### Digital Temperature Controller

External digital temperature control has an easily accessible panel to quickly adjust temperatures, which includes a defrost control.

### Designed to enhance impulsive sales

Ideal for eye-catching displays and convenient access with fast service in high traffic area.

### Additional Features

- Advertising panel
- ABS bump guard liners
- 5mm thick durable clear PC (polycarbonate) product stopper
- Simple plug-in installation
- Color: black, stainless steel
- 2 year parts and labor warranty with additional 3 year compressor warranty

See page 65 for Island Display Case models and specifications.





TIOM-48SB-N



## Curved Glass Bakery Display Cases

### Display Case Types

Refrigerated, Dry, Refrigerated & Dry Case Combination

### Self-Cleaning Condenser

A fine mesh filter catches dust, while rotating brushes run daily to move dirt away from the condenser. This revolutionary device comes at no additional cost.

### Hydrocarbon Refrigerants

With innovative and eco-friendly technology, Turbo Air brings you hydrocarbon refrigerators designed to meet DOE's Energy Conservation Standards in 2017 and to use EPA's SNAP Program approved HC refrigerants. Hydrocarbon refrigerants do not deplete the ozone layer and have very low contribution to global warming (ODP-0, GWP-3) (not applicable to Dry Cases).

### LED Interior Lighting

The LED lighting system illuminates products for better visibility to increase sales. Each shelf is equipped with LED lights to reduce shadows.

### Low-E coated double pane glass is tempered for safety

### Digital Temperature Controller

External digital temperature control has an easily accessible panel to quickly adjust temperatures, which includes a defrost control (not applicable to Dry Cases).

### Designed to enhance impulsive sales

Ideal for eye-catching displays and convenient access with fast service in high traffic area.

### Attractive, elegant, glass sided Euro design

Curved tempered front glass and minimal frame provide full product visibility to optimize display effects. Its elegant contemporary euro design will not only enhance any store atmosphere but also will keep product presentation at its best and most beautiful.

### Additional Features

- Cantilever wired shelves adjustable up and down, tilted
- Stainless steel floor and airflow grille
- Sliding rear doors for product loading & unloading
- Rear access to compressor compartment for quick and easy service
- Color: white, black
- 2 year parts and labor warranty with additional 3 year compressor warranty (2 year parts and labor warranty only for Dry Cases)

See page 67 for Curved Glass-Bakery Case models and specifications.



Boulangerie Française

Pâtisseries











## European Straight Bakery Display Cases

### Display Case Types

Refrigerated, Freezer, Dry, Refrigerated & Dry Case Combination

### Self-Cleaning Condenser

A fine mesh filter catches dust, while rotating brushes run daily to move dirt away from the condenser. This revolutionary device comes at no additional cost.

### Hydrocarbon Refrigerants

With innovative and eco-friendly technology, Turbo Air brings you hydrocarbon refrigerators designed to meet DOE's Energy Conservation Standards in 2017 and to use EPA's SNAP Program approved HC refrigerants. Hydrocarbon refrigerants do not deplete the ozone layer and have very low contribution to global warming (ODP-0, GWP-3) (not applicable to Dry Cases).

### LED Interior Lighting

The LED lighting system illuminates products for better visibility to increase sales. Each shelf is equipped with LED lights to reduce shadows.

### Digital Temperature Controller

External digital temperature control has an easily accessible panel to quickly adjust temperatures, which includes a defrost control (not applicable to Dry Cases).

### Designed to enhance impulsive sales

Ideal for eye-catching displays and convenient access with fast service in high traffic area.

### Attractive, elegant, glass sided Euro design

Tempered front glass and minimal frame provide full product visibility to optimize display effects. Its elegant contemporary euro design will not only enhance any store atmosphere but also will keep product presentation at its best and most beautiful.

### Low-E coated double pane glass is tempered for safety

Low-E coated double pane glass (Refrigerated, Dry, Refrigerated & Dry Case combination) and triple pane glass (Freezer) are tempered for safety.

### Additional Features

- Adjustable, tempered glass shelves with stainless steel front and back edges
- Stainless steel floor and airflow grille
- Sliding rear doors for product loading & unloading
- Rear access to compressor compartment for quick and easy service
- Color: white, black, stainless steel
- 2 year parts and labor warranty with additional 3 year compressor warranty (2 year parts and labor warranty only for Dry Cases)

See page 67 for European Straight-Bakery Case models and specifications.



## Bakery Display Cases

### Self-Cleaning Condenser

A fine mesh filter catches dust, while rotating brushes run daily to move dirt away from the condenser. This revolutionary device comes at no additional cost.

### Hydrocarbon Refrigerants

With innovative and eco-friendly technology, Turbo Air brings you hydrocarbon refrigerators designed to meet DOE's Energy Conservation Standards in 2017 and to use EPA's SNAP Program approved HC refrigerants. Hydrocarbon refrigerants do not deplete the ozone layer and have very low contribution to global warming (ODP-0, GWP-3).

### Digital Temperature Controller

### LED Interior Lighting

The LED lighting system illuminates products for better visibility to increase sales.

### Double pane glass is tempered for safety (Front heated glass)

### Attractive, elegant, glass sided Euro design

Straight, tempered front & side glass with minimal frame provide full product visibility to optimize display effects. Its elegant contemporary euro design and luxurious colored case will not only enhance any store atmosphere but also will keep product presentation at its best and most beautiful.

### Efficient Sliding doors

Sliding rear doors for product loading & unloading (TBP-NN models)  
Sliding rear doors and front glass opening (TBP-FN models)

### Additional Features

- Front glass door lock standard (only TBP-FN models)
- Bottom glass shelf and tempered glass shelves
- Stainless steel airflow grille
- Self-contained system, no plumbing required
- 3" dia. swivel casters standard
- Color: white (mirror finish), black (mirror finish) stainless steel (matte finish)
- 2 year parts and labor warranty with additional 3 year compressor warranty

See page 67-68 for Bakery Display Case models and specifications.







## Drop-In Type Bakery Display Cases

### Self-Cleaning Condenser

A fine mesh filter catches dust, while rotating brushes run daily to move dirt away from the condenser. This revolutionary device comes at no additional cost.

### Hydrocarbon Refrigerants

With innovative and eco-friendly technology, Turbo Air brings you hydrocarbon refrigerators designed to meet DOE's Energy Conservation Standards in 2017 and to use EPA's SNAP Program approved HC refrigerants. Hydrocarbon refrigerants do not deplete the ozone layer and have very low contribution to global warming (ODP-0, GWP-3).

### Digital Temperature Controller

### LED Interior Lighting

The LED lighting system illuminates products for better visibility to increase sales.

### Double pane glass is tempered for safety (Front heated glass)

### Attractive, elegant, glass sided Euro design

Straight, tempered front & side glass with minimal frame provide full product visibility to optimize display effects. Its elegant contemporary euro design and luxurious colored case will not only enhance any store atmosphere but also will keep product presentation at its best and most beautiful.

### Sliding rear doors and front glass opening

Sliding rear doors make it easily accessible and convenient to arrange products. The front glass opens just enough to clean the interior effortlessly.

### Additional Features

- Front glass door lock standard
- Bottom glass shelf and tempered glass shelves
- Stainless steel airflow grille
- Self-contained system, no plumbing required
- 3" dia. swivel casters standard
- Color: stainless steel
- 2 year parts and labor warranty with additional 3 year compressor warranty

See page 68 for Drop-In Type Bakery Display Case models and specifications.







## Sandwich & Cheese Display Cases Open Display Merchandisers

### Self-Cleaning Condenser

A fine mesh filter catches dust, while rotating brushes run daily to move dirt away from the condenser. This revolutionary device comes at no additional cost.

### Hydrocarbon Refrigerants

With innovative and eco-friendly technology, Turbo Air brings you hydrocarbon refrigerators designed to meet DOE's Energy Conservation Standards in 2017 and to use EPA's SNAP Program approved HC refrigerants. Hydrocarbon refrigerants do not deplete the ozone layer and have very low contribution to global warming (ODP-0, GWP-3).

### Digital Temperature Controller

**Single pane glass is tempered for safety**

### Attractive, elegant, glass sided Euro design

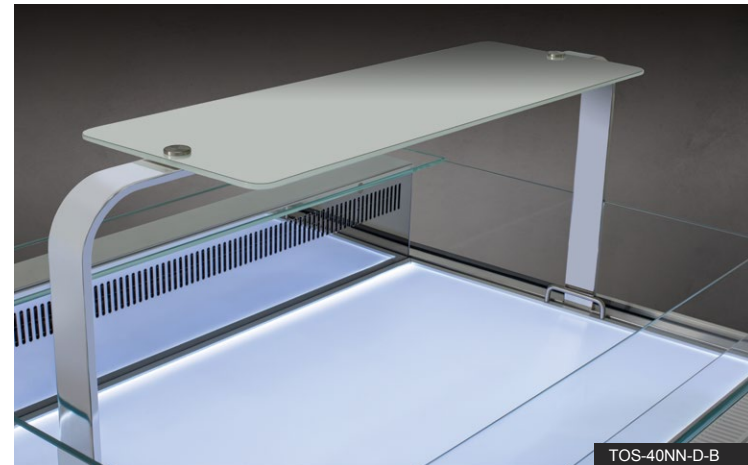
Straight 4 sided glass provide full product visibility to optimize display effects. Its elegant contemporary euro design and luxurious colored case will not only enhance any store atmosphere but also will keep product presentation at its best and most beautiful.

### Bottom glass shelf and stainless steel airflow grille

#### Additional Features

- Bottom lit, LED interior lighting
- Self-contained system, no plumbing required
- 3" dia. swivel casters standard
- Color: white (mirror finish), black (mirror finish) stainless steel (matte finish)
- 2 year parts and labor warranty with additional 3 year compressor warranty

See page 68 for Sandwich & Cheese Display Case models and specifications.







## Curved Glass Direct Cooling Type Deli Cases



### Self-Cleaning Condenser

A fine mesh filter catches dust, while rotating brushes run daily to move dirt away from the condenser. This revolutionary device comes at no additional cost.

### Hydrocarbon Refrigerants

With innovative and eco-friendly technology, Turbo Air brings you hydrocarbon refrigerators designed to meet DOE's Energy Conservation Standards in 2017 and to use EPA's SNAP Program approved HC refrigerants. Hydrocarbon refrigerants do not deplete the ozone layer and have very low contribution to global warming (ODP-0, GWP-3).

### LED Interior Lighting

The LED lighting system illuminates products for better visibility to increase sales. Each shelf is equipped with LED lights to reduce shadows.

### Digital Temperature Controller

**Low-E coated double pane glass is tempered for safety**

### Attractive, elegant, glass sided Euro design

Curved tempered front glass and minimal frame provide full product visibility to optimize display effects. Its elegant contemporary euro design will not only enhance any store atmosphere but also will keep product presentation at its best and most beautiful.

### Stainless steel floor and airflow grille

### Heavy duty, white PE coated wire shelves

### Additional Features

- Sliding rear doors for product loading & unloading
- Cantilever wired shelves adjustable up and down, tilted
- Rear access to compressor compartment for quick and easy service
- Color: white, black
- 2 year parts and labor warranty with additional 3 year compressor warranty

See page 69 for Deli Case models and specifications.



TCDD-72H-W-N



# Cold Drinks





## Swing Door Refrigerators Glass Door Merchandisers

### Self-Cleaning Condenser

A fine mesh filter catches dust, while rotating brushes run daily to move dirt away from the condenser. This revolutionary device comes at no additional cost (except TGM-5SD/7SD-N6).

### Hydrocarbon Refrigerants

With innovative and eco-friendly technology, Turbo Air brings you hydrocarbon refrigerators designed to meet DOE's Energy Conservation Standards in 2017 and to use EPA's SNAP Program approved HC refrigerants. Hydrocarbon refrigerants do not deplete the ozone layer and have very low contribution to global warming (ODP-0, GWP-3).

### LED Interior Lighting

The LED lighting system illuminates products for better visibility to increase grab-and-go sales.

### Hot Gas Condensate System

Condensate system surfaces have been specially treated to resist corrosion and prevents the overflow of condensate water (only TGM-35SD/47SD/72SD-N).

### Digital Temperature Controller

External digital temperature control has an easily accessible panel to quickly adjust temperatures, which includes a defrost control (except TGM-5SD/7SD-N6).

### Energy Conserving Fan Control

Utilizing algorithmic air circulation for optimal temperature levels, our innovative fan control system conserves energy by at least 15% and increases compressor life by up to 30%.

### Double Pane Glass Doors with Low-E glass

### Shadow Free Advertising Panel

(except TGM-5SD/7SD/10SD/12SD-N6)

### Additional Features

- Anti-corrosion coated evaporator standard
- Door locks standard
- Color: white, black
- 3 year parts and labor warranty with additional 4 year compressor warranty

See page 69 for Swing Door Refrigerator models and specifications.





## Swing Door Freezers

# Glass Door Merchandisers

### Self-Cleaning Condenser

A fine mesh filter catches dust, while rotating brushes run daily to move dirt away from the condenser. This revolutionary device comes at no additional cost (except TGF-5SD-N).

### Only at Turbo Air, Only in the World

Turbo Air's 2 & 3 Glass Door Freezers are powered by 115V. Not only is our 115V simple and easy to plug in and operate, it also saves customers over \$1,000 in electrical line installation for 220V powered glass door freezers.

### LED Interior Lighting

The LED lighting system illuminates products for better visibility to increase grab-and-go sales.

### Hydrocarbon Refrigerants

With innovative and eco-friendly technology, Turbo Air brings you hydrocarbon refrigerators designed to meet DOE's Energy Conservation Standards in 2017 and to use EPA's SNAP Program approved HC refrigerants. Hydrocarbon refrigerants do not deplete the ozone layer and have very low contribution to global warming (ODP-0, GWP-3).

### No electrical cabinet heater is needed

### Digital Temperature Controller

External digital temperature control has an easily accessible panel to quickly adjust temperatures, which includes a defrost control.

### Energy Conserving Fan Control

Utilizing algorithmic air circulation for optimal temperature levels, our innovative fan control system conserves energy by at least 15% and increases compressor life by up to 30%.

### Triple Pane Heated Glass Doors with Low-E glass

Equipped with unique triple-pane heated glass doors which enhance energy efficiency by preventing heat transfers and minimizing condensation. Lightweight door construction reduces door maintenance, bushing wear, and facilitates smooth door opening.

### Shadow Free Advertising Panel (except TGF-5SD/10SD-N)

#### Additional Features

- Anti-corrosion coated evaporator standard
- Door locks standard
- Color: white, black
- 3 year parts and labor warranty with additional 4 year compressor warranty

See page 69 for Swing Door Freezer models and specifications.





## Frozen Foods

## Frozen Foods

## Frozen Foods

## Frozen Foods

## Frozen Foods

## Frozen Foods

## Frozen Foods



# GRAB-N -GO



## Full View Swing Door Refrigerators Glass Door Merchandisers

### Self-Cleaning Condenser

A fine mesh filter catches dust, while rotating brushes run daily to move dirt away from the condenser. This revolutionary device comes at no additional cost.

### Hydrocarbon Refrigerants

With innovative and eco-friendly technology, Turbo Air brings you hydrocarbon refrigerators designed to meet DOE's Energy Conservation Standards in 2017 and to use EPA's SNAP Program approved HC refrigerants. Hydrocarbon refrigerants do not deplete the ozone layer and have very low contribution to global warming (ODP-0, GWP-3).

### LED Interior Lighting

The LED lighting system illuminates products for better visibility to increase grab-and-go sales.

### Digital Temperature Controller

External digital temperature control has an easily accessible panel to quickly adjust temperatures, which includes a defrost control.

### Energy Conserving Fan Control

Utilizing algorithmic air circulation for optimal temperature levels, our innovative fan control system conserves energy by at least 15% and increases compressor life by up to 30%.

### Double Pane Heated Glass Doors with Low-E glass

### Hot Gas Condensate System

Condensate system surfaces have been specially treated to resist corrosion and prevents the overflow of condensate water (except TGM-15SDH/23SDH-N6).

### Energy Star certified\*

#### Additional Features

- Anti-corrosion coated evaporator standard
  - Door locks standard
  - Color: white, black
  - 3 year parts and labor warranty with additional 4 year compressor warranty
- See page 70 for Full View Swing Door Refrigerator models and specifications.

\* Information accurate at time of printing. Up to date information available at [www.turboairinc.com](http://www.turboairinc.com).



TGM-47SDHW-N





## Full View Swing Door Freezers

# Glass Door Merchandisers

### Self-Cleaning Condenser

A fine mesh filter catches dust, while rotating brushes run daily to move dirt away from the condenser. This revolutionary device comes at no additional cost.

### Only at Turbo Air, Only in the World

Turbo Air's 2 & 3 Glass Door Freezers are powered by 115V. Not only is our 115V simple and easy to plug in and operate, it also saves customers over \$1,000 in electrical line installation for 220V powered glass door freezers.

### Hydrocarbon Refrigerants

With innovative and eco-friendly technology, Turbo Air brings you hydrocarbon refrigerators designed to meet DOE's Energy Conservation Standards in 2017 and to use EPA's SNAP Program approved HC refrigerants. Hydrocarbon refrigerants do not deplete the ozone layer and have very low contribution to global warming (ODP-0, GWP-3).

### Digital Temperature Controller

External digital temperature control has an easily accessible panel to quickly adjust temperatures, which includes a defrost control.

### LED Interior Lighting

The LED lighting system illuminates products for better visibility to increase grab-and-go sales.

### Triple Pane Heated Glass Doors with Low-E glass

Equipped with unique triple-pane heated glass doors which enhance energy efficiency by preventing heat transfers and minimizing condensation. Lightweight door construction reduces door maintenance, bushing wear, and facilitates smooth door opening.

### Energy Conserving Fan Control

Utilizing algorithmic air circulation for optimal temperature levels, our innovative fan control system conserves energy by at least 15% and increases compressor life by up to 30%.

### No electrical cabinet heater is needed

### Energy Star certified\*

(except TGF-72SDH-N)

### Additional Features

- Anti-corrosion coated evaporator standard
- Door locks standard
- Color: white, black
- 3 year parts and labor warranty with additional 4 year compressor warranty

See page 70 for Full View Swing Door Freezer models and specifications.

\* Information accurate at time of printing. Up to date information available at [www.turboairinc.com](http://www.turboairinc.com).







## Full View Swing Door Refrigerators & Freezers

# Jumbo Glass Door Merchandisers

### Self-Cleaning Condenser

A fine mesh filter catches dust, while rotating brushes run daily to move dirt away from the condenser. This revolutionary device comes at no additional cost.

### Hydrocarbon Refrigerants

With innovative and eco-friendly technology, Turbo Air brings you hydrocarbon refrigerators designed to meet DOE's Energy Conservation Standards in 2017 and to use EPA's SNAP Program approved HC refrigerants. Hydrocarbon refrigerants do not deplete the ozone layer and have very low contribution to global warming (ODP-0, GWP-3).

### Digital Temperature Controller

External digital temperature control has an easily accessible panel to quickly adjust temperatures, which includes a defrost control.

### LED Interior Lighting

The LED lighting system illuminates products for better visibility to increase grab-and-go sales.

### Energy Conserving Fan Control

Utilizing algorithmic air circulation for optimal temperature levels, our innovative fan control system conserves energy by at least 15% and increases compressor life by up to 30%.

### Double Pane Glass Doors with Low-E glass

Energy saving double pane glass doors are equipped with Low-emissivity glass, which reduces outer heat gain and decreases energy consumption. It enhances energy efficiency and minimizes condensation. Lightweight door construction also reduces door maintenance and bushing wear, which in turn facilitates smoother door opening.

**Loading capacity is the same as an endless remote unit**

**No plumbing required**

**No installation work required**

**Low maintenance expenses**

**Energy saving**

**Easily movable**

### Additional Features

- Field reversible door hinge
- Anti-corrosion coated evaporator standard
- Color: white, black
- 3 year parts and labor warranty with additional 4 year compressor warranty

See page 70-71 for Jumbo Full View Swing Door Refrigerator and Freezer models and specifications.

# FROZEN FOODS

MIX & CREATES







## Solid & Glass Door Back Bars

# Underbar Equipment



### Self-Cleaning Condenser

A fine mesh filter catches dust, while rotating brushes run daily to move dirt away from the condenser. This revolutionary device comes at no additional cost.

### Hydrocarbon Refrigerants

With innovative and eco-friendly technology, Turbo Air brings you hydrocarbon refrigerators designed to meet DOE's Energy Conservation Standards in 2017 and to use EPA's SNAP Program approved HC refrigerants. Hydrocarbon refrigerants do not deplete the ozone layer and have very low contribution to global warming (ODP-0, GWP-3).

### LED Interior Lighting

The LED lighting system illuminates products for better visibility.

### Digital Temperature Controller

External digital temperature control has an easily accessible panel to quickly adjust temperatures, which includes a defrost control (except TBB-1SBD-N6).

### Double pane glass doors with Low-E glass (SGD Models)

### Stainless Steel Countertop & Interior

The exterior of the cabinet is constructed with heavy gauge reinforced stainless steel countertop and wear-resistant black vinyl coated galvanized steel. The interior is painted galvanized steel with reinforced stainless steel floor. Turbo Air Back Bar models guarantees the utmost in cleanliness and long product life. It also adds a touch of style to the most refined setting.

### Forced Air Cooling System

Fast cooling and balanced temperature throughout the cabinet.

### Side Mount Compressor Unit

With compressors positioned on the side of the unit, our refrigerators can now be serviced without being moved. Our innovative, front breathing feature also allows this model to be highly efficient in narrow spaces.

### Additional Features

- Anti-corrosion coated evaporator standard
- Door locks standard
- Color: black, stainless steel
- 3 year parts and labor warranty with additional 4 year compressor warranty

See page 71-72 for Back Bar models and specifications.





## Beer Dispensers Underbar Equipment

### Self-Cleaning Condenser

A fine mesh filter catches dust, while rotating brushes run daily to move dirt away from the condenser. This revolutionary device comes at no additional cost.

### Hydrocarbon Refrigerants

With innovative and eco-friendly technology, Turbo Air brings you hydrocarbon refrigerators designed to meet DOE's Energy Conservation Standards in 2017 and to use EPA's SNAP Program approved HC refrigerants. Hydrocarbon refrigerants do not deplete the ozone layer and have very low contribution to global warming (ODP-0, GWP-3).

### Stainless Steel Countertop & Interior

Stainless steel cabinet construction Super Deluxe (SDD) models boast a stainless steel exterior (except gavanized steel back and bottom). SBD models have an attractive wear-resistant black vinyl exterior. Heavy gauge stainless steel countertop is perfect for sanitation and durability.

### Forced air cooling system

Fast cooling and balanced temperature throughout the cabinet.

### Digital Temperature Controller

External digital temperature control has an easily accessible panel to quickly adjust temperatures, which includes a defrost control (except TBD-1SBD/SDD-N6).

### Side Mount Compressor Unit

With compressors positioned on the side of the unit, our refrigerators can now be serviced without being moved. Our innovative, front breathing feature also allows this model to be highly efficient in narrow spaces.

### Club Top (TCB) models provide easy access to the interior area

#### Additional Features

- Anti-corrosion coated evaporator standard
- Double faucet beer tower standard
- Door locks standard
- Color: black, stainless steel
- 3 year parts and labor warranty with additional 4 year compressor warranty

See page 72 for Beer Dispenser models and specifications.





## Open Display Merchandisers

### Horizontal / Slim Profiles - Glass Side Panel



Model	CU./FT.	#of Bottom shelves	HP	AMPS	Crated Weight (lbs.)	L x D* x H† (inches)
TOM-30SW(B, S)-N	4.7	3	1/3	6.7	338	28 1/8 x 33 1/2 x 41 1/2
TOM-40SW(B, S)-N	6.7	3	3/4	6.9	440	39 1/8 x 33 1/2 x 41 1/2
TOM-50SW(B, S)-N	8.9	3	3/4	6.9	481	50 7/8 x 33 1/2 x 41 1/2
TOM-60SW(B, S)-N	11.2	3	3/4 x 2	11.3	535	63 3/8 x 33 1/2 x 41 1/2
TOM-75SW(B, S)-N	13.5	3	3/4 x 2	11.3	680	75 3/4 x 33 1/2 x 41 1/2

\* Depth does not include for rear spacers. † Height does not include for bolt height.

### Horizontal / Slim Profiles - Solid Side Panel



Model	CU./FT.	#of Bottom shelves	HP	AMPS	Crated Weight (lbs.)	L x D* x H† (inches)
TOM-30SB-SP(-A)-N	4.7	3	1/3	6.7	338	28 1/8 x 33 1/2 x 41 1/2
TOM-40SB-SP(-A)-N	6.7	3	3/4	6.9	440	39 1/8 x 33 1/2 x 41 1/2
TOM-50SB-SP(-A)-N	8.9	3	3/4	6.9	481	50 7/8 x 33 1/2 x 41 1/2
TOM-60SB-SP(-A)-N	11.2	3	3/4 x 2	11.3	535	63 3/8 x 33 1/2 x 41 1/2
TOM-75SB-SP(-A)-N	13.5	3	3/4 x 2	11.3	680	75 3/4 x 33 1/2 x 41 1/2

SP-N: stainless steel interior, SP-A-N: black coated interior \* Depth does not include for rear spacers. † Height does not include for bolt height.

### Horizontal / Low Profiles - Glass Side Panel



Model	CU./FT.	#of Shelves	HP	AMPS	Crated Weight (lbs.)	L x D* x H† (inches)
TOM-30LW(B, S)-N	5.1	1	1/3	6.7	340	28 x 33 1/2 x 45 7/8
TOM-40LW(B, S)-N	7.4	1	3/4	6.9	450	39 x 33 1/2 x 45 7/8
TOM-50LW(B, S)-N	9.8	1	3/4	6.9	505	50 7/8 x 33 1/2 x 45 7/8
TOM-60LW(B, S)-N	12.3	1	3/4 x 2	11.3	583	63 1/4 x 33 1/2 x 45 7/8
TOM-75LW(B, S)-N	14.8	2	3/4 x 2	11.3	710	75 5/8 x 33 1/2 x 45 7/8

\* Depth does not include for rear spacers. † Height does not include for bolt height.

### Horizontal / Low Profiles - Solid Side Panel



Model	CU./FT.	#of Shelves	HP	AMPS	Crated Weight (lbs.)	L x D* x H† (inches)
TOM-30LB-SP(-A)-N	5.1	1	1/3	6.7	340	28 x 33 1/2 x 45 7/8
TOM-40LB-SP(-A)-N	7.4	1	3/4	6.9	450	39 x 33 1/2 x 45 7/8
TOM-50LB-SP(-A)-N	9.8	1	3/4	6.9	505	50 7/8 x 33 1/2 x 45 7/8
TOM-60LB-SP(-A)-N	12.3	1	3/4 x 2	11.3	583	63 1/4 x 33 1/2 x 45 7/8
TOM-75LB-SP(-A)-N	14.8	2	3/4 x 2	11.3	710	75 5/8 x 33 1/2 x 45 7/8

SP-N: stainless steel interior, SP-A-N: black coated interior \* Depth does not include for rear spacers. † Height does not include for bolt height.  
Design and specifications subject to change without notice. Most updated spec sheets are available at [www.turboairinc.com](http://www.turboairinc.com).

## Horizontal - Glass Side Panel



Model	CU./FT. (Top / Bottom)	#of Shelves	HP	AMPS	Crated Weight (lbs.)	L x D x H* (inches)
TBA37-50N-W(B)	4.2	2	3/4	5.9	450	37 x 28 x 48 <sup>5</sup> / <sub>8</sub>
TBA49-50N-W(B)	5.7	2	3/4	6.9	550	48 <sup>7</sup> / <sub>8</sub> x 28 x 48 <sup>5</sup> / <sub>8</sub>

\* Height does not include caster height.

## Top Display Dry Cases (Optional for TOM-S/L-N)



Model	CU./FT.	# of Doors	#of Shelves	Crated Weight (lbs.)	L x D x H (inches)
TOMD-30HW(B, S)	2.1	2	1	53	28 x 12 <sup>1</sup> / <sub>4</sub> x 17 <sup>3</sup> / <sub>4</sub>
TOMD-40HW(B, S)	3	2	1	70	39 x 12 <sup>1</sup> / <sub>4</sub> x 17 <sup>3</sup> / <sub>4</sub>
TOMD-50HW(B, S)	4	2	1	87	50 <sup>3</sup> / <sub>4</sub> x 12 <sup>1</sup> / <sub>4</sub> x 17 <sup>3</sup> / <sub>4</sub>
TOMD-60HW(B, S)	5	3	1	110	63 <sup>1</sup> / <sub>4</sub> x 12 <sup>1</sup> / <sub>4</sub> x 17 <sup>3</sup> / <sub>4</sub>
TOMD-75HW(B, S)	6.1	3	1	128	75 <sup>5</sup> / <sub>8</sub> x 12 <sup>1</sup> / <sub>4</sub> x 17 <sup>3</sup> / <sub>4</sub>
TOMD-30LW(B, S)	1.5	2	-	38	28 x 12 <sup>1</sup> / <sub>4</sub> x 13 <sup>1</sup> / <sub>4</sub>
TOMD-40LW(B, S)	2.1	2	-	51	39 x 12 <sup>1</sup> / <sub>4</sub> x 13 <sup>1</sup> / <sub>4</sub>
TOMD-50LW(B, S)	2.9	2	-	65	50 <sup>3</sup> / <sub>4</sub> x 12 <sup>1</sup> / <sub>4</sub> x 13 <sup>1</sup> / <sub>4</sub>
TOMD-60LW(B, S)	3.6	3	-	80	63 <sup>1</sup> / <sub>4</sub> x 12 <sup>1</sup> / <sub>4</sub> x 13 <sup>1</sup> / <sub>4</sub>
TOMD-75LW(B, S)	4.3	3	-	95	75 <sup>5</sup> / <sub>8</sub> x 12 <sup>1</sup> / <sub>4</sub> x 13 <sup>1</sup> / <sub>4</sub>

## Combination Cases / Curved Front



Model	CU./FT. (Top / Bottom)	#of Shelves	HP	AMPS	Crated Weight (lbs.)	L x D x H* (inches)
TOM-W-40SB-N	4.2 / 6.4	2	3/4	6.9	535	38 <sup>7</sup> / <sub>8</sub> x 34 <sup>1</sup> / <sub>8</sub> x 56 <sup>3</sup> / <sub>4</sub>
TOM-W-50SB-N	5.6 / 8.5	2	3/4	6.9	639	50 <sup>7</sup> / <sub>8</sub> x 34 <sup>1</sup> / <sub>8</sub> x 56 <sup>3</sup> / <sub>4</sub>
TOM-W-60SB-N	7.0 / 10.7	2	3/4 x 2	11.3	730	62 <sup>5</sup> / <sub>8</sub> x 34 <sup>1</sup> / <sub>8</sub> x 56 <sup>3</sup> / <sub>4</sub>

White color option available (8 week lead time) \* Height does not include for bolt height.

## Combination Cases / European Straight Front



Model	CU./FT. (Top / Bottom)	#of Shelves	HP	AMPS	Crated Weight (lbs.)	L x D x H* (inches)
TOM-W-40SB-UF-N	4.2 / 6.4	2	3/4	6.9	535	38 <sup>7</sup> / <sub>8</sub> x 34 <sup>1</sup> / <sub>8</sub> x 56 <sup>3</sup> / <sub>4</sub>
TOM-W-50SB-UF-N	5.6 / 8.5	2	3/4	6.9	639	50 <sup>7</sup> / <sub>8</sub> x 34 <sup>1</sup> / <sub>8</sub> x 56 <sup>3</sup> / <sub>4</sub>
TOM-W-60SB-UF-N	7.0 / 10.7	2	3/4 x 2	11.3	730	62 <sup>5</sup> / <sub>8</sub> x 34 <sup>1</sup> / <sub>8</sub> x 56 <sup>3</sup> / <sub>4</sub>

White color option available (8 week lead time) \* Height does not include for bolt height.

Design and specifications subject to change without notice. Most updated spec sheets are available at [www.turboairinc.com](http://www.turboairinc.com).





## Open Display Merchandisers

### Horizontal / European Straight



Model	CU./FT.	#of Shelves	HP	AMPS	Crated Weight (lbs.)	L x D x H* (inches)
TOM-36L-UF-W(B, S)-1S-N	4.6	-	3/4 x 2	11.3	412	34 3/4 x 33 x 37 3/4
TOM-36L-UF-W(B, S)-2S-N	7.5	1	3/4 x 2	11.3	447	34 3/4 x 33 x 44 1/4
TOM-36L-UF-W(B, S)-3S-N	11.1	2	3/4 x 2	11.3	482	34 3/4 x 33 x 52 1/2
TOM-48L-UF-W(B, S)-1S-N	6.3	-	3/4 x 2	13.6	504	46 3/4 x 33 x 37 3/4
TOM-48L-UF-W(B, S)-2S-N	10.2	1	3/4 x 2	13.6	528	46 3/4 x 33 x 44 1/4
TOM-48L-UF-W(B, S)-3S-N	15.2	2	3/4 x 2	13.6	550	46 3/4 x 33 x 52 1/2
TOM-60L-UF-W(B, S)-1S-N	8	-	3/4 x 2	15.0	548	58 3/4 x 33 x 37 3/4
TOM-60L-UF-W(B, S)-2S-N	13	1	3/4 x 2	15.0	584	58 3/4 x 33 x 44 1/4
TOM-60L-UF-W(B, S)-3S-N	19.3	2	3/4 x 2	15.0	631	58 3/4 x 33 x 52 1/2
TOM-72L-UF-W(B, S)-1S-N	9.7	-	3/4 x 4	13.0	769	70 3/4 x 33 x 37 3/4
TOM-72L-UF-W(B, S)-2S-N	15.8	2	3/4 x 4	13.0	805	70 3/4 x 33 x 44 1/4
TOM-72L-UF-W(B, S)-3S-N	23.4	4	3/4 x 4	13.0	854	70 3/4 x 33 x 52 1/2

\* Height does not include for bolt height.

### Horizontal / Drop-In Type European Straight



Model	CU./FT.	#of Shelves	HP	AMPS	Crated Weight (lbs.)	L x D x H* (inches)
TOM-36L-UF-W(B, S)-1SI-N	4.6	-	3/4 x 2	11.3	412	35 7/8 x 33 x 37 3/4
TOM-36L-UF-W(B, S)-2SI-N	7.5	1	3/4 x 2	11.3	447	35 7/8 x 33 x 44 1/4
TOM-36L-UF-W(B, S)-3SI-N	11.1	2	3/4 x 2	11.3	482	35 7/8 x 33 x 52 1/2
TOM-48L-UF-W(B, S)-1SI-N	6.3	-	3/4 x 2	13.6	504	47 7/8 x 33 x 37 3/4
TOM-48L-UF-W(B, S)-2SI-N	10.2	1	3/4 x 2	13.6	528	47 7/8 x 33 x 44 1/4
TOM-48L-UF-W(B, S)-3SI-N	15.2	2	3/4 x 2	13.6	550	47 7/8 x 33 x 52 1/2
TOM-60L-UF-W(B, S)-1SI-N	8	-	3/4 x 2	15.0	548	59 7/8 x 33 x 37 3/4
TOM-60L-UF-W(B, S)-2SI-N	13	1	3/4 x 2	15.0	584	59 7/8 x 33 x 44 1/4
TOM-60L-UF-W(B, S)-3SI-N	19.3	2	3/4 x 2	15.0	631	59 7/8 x 33 x 52 1/2
TOM-72L-UF-W(B, S)-1SI-N	9.7	-	3/4 x 4	13.0	769	71 7/8 x 33 x 37 3/4
TOM-72L-UF-W(B, S)-2SI-N	15.8	2	3/4 x 4	13.0	805	71 7/8 x 33 x 44 1/4
TOM-72L-UF-W(B, S)-3SI-N	23.4	4	3/4 x 4	13.0	854	71 7/8 x 33 x 52 1/2

\* Height does not include for bolt height.

Design and specifications subject to change without notice. Most updated spec sheets are available at [www.turboairinc.com](http://www.turboairinc.com).

## Horizontal / European Straight - Sliding Rear Glass doors



Model	CU./FT.	#of Shelves	HP	AMPS	Crated Weight (lbs.)	L x D x H* (inches)
TOM-36L-UFD-W(B, S)-1S-N	4.6	-	3/4 x 2	11.3	421	34 3/4 x 33 3/4 x 37 3/4
TOM-36L-UFD-W(B, S)-2S-N	7.5	1	3/4 x 2	11.3	461	34 3/4 x 33 3/4 x 44 1/4
TOM-36L-UFD-W(B, S)-3S-N	11.1	2	3/4 x 2	11.3	499	34 3/4 x 33 3/4 x 52 1/2
TOM-48L-UFD-W(B, S)-1S-N	6.3	-	3/4 x 2	13.6	520	46 3/4 x 33 3/4 x 37 3/4
TOM-48L-UFD-W(B, S)-2S-N	10.2	1	3/4 x 2	13.6	547	46 3/4 x 33 3/4 x 44 1/4
TOM-48L-UFD-W(B, S)-3S-N	15.2	2	3/4 x 2	13.6	574	46 3/4 x 33 3/4 x 52 1/2
TOM-60L-UFD-W(B, S)-1S-N	8	-	3/4 x 2	15.0	566	58 3/4 x 33 3/4 x 37 3/4
TOM-60L-UFD-W(B, S)-2S-N	13	1	3/4 x 2	15.0	606	58 3/4 x 33 3/4 x 44 1/4
TOM-60L-UFD-W(B, S)-3S-N	19.3	2	3/4 x 2	15.0	661	58 3/4 x 33 3/4 x 52 1/2
TOM-72L-UFD-W(B, S)-1S-N	9.7	-	3/4 x 4	13.0	793	70 3/4 x 33 3/4 x 37 3/4
TOM-72L-UFD-W(B, S)-2S-N	15.8	2	3/4 x 4	13.0	835	70 3/4 x 33 3/4 x 44 1/4
TOM-72L-UFD-W(B, S)-3S-N	23.4	4	3/4 x 4	13.0	893	70 3/4 x 33 3/4 x 52 1/2

\* Height does not include for bolt height.

## Horizontal / Drop-In Type European Straight - Sliding Rear Glass doors



Model	CU./FT.	#of Shelves	HP	AMPS	Crated Weight (lbs.)	L x D x H* (inches)
TOM-36L-UFD-W(B, S)-1SI-N	4.6	-	3/4 x 2	11.3	421	35 7/8 x 33 3/4 x 37 3/4
TOM-36L-UFD-W(B, S)-2SI-N	7.5	1	3/4 x 2	11.3	461	35 7/8 x 33 3/4 x 44 1/4
TOM-36L-UFD-W(B, S)-3SI-N	11.1	2	3/4 x 2	11.3	499	35 7/8 x 33 3/4 x 52 1/2
TOM-48L-UFD-W(B, S)-1SI-N	6.3	-	3/4 x 2	13.6	520	47 7/8 x 33 3/4 x 37 3/4
TOM-48L-UFD-W(B, S)-2SI-N	10.2	1	3/4 x 2	13.6	547	47 7/8 x 33 3/4 x 44 1/4
TOM-48L-UFD-W(B, S)-3SI-N	15.2	2	3/4 x 2	13.6	574	47 7/8 x 33 3/4 x 52 1/2
TOM-60L-UFD-W(B, S)-1SI-N	8	-	3/4 x 2	15.0	566	58 3/4 x 33 3/4 x 37 3/4
TOM-60L-UFD-W(B, S)-2SI-N	13	1	3/4 x 2	15.0	606	58 3/4 x 33 3/4 x 44 1/4
TOM-60L-UFD-W(B, S)-3SI-N	19.3	2	3/4 x 2	15.0	661	58 3/4 x 33 3/4 x 52 1/2
TOM-72L-UFD-W(B, S)-1SI-N	9.7	-	3/4 x 4	13.0	793	71 7/8 x 33 3/4 x 37 3/4
TOM-72L-UFD-W(B, S)-2SI-N	15.8	2	3/4 x 4	13.0	835	71 7/8 x 33 3/4 x 44 1/4
TOM-72L-UFD-W(B, S)-3SI-N	23.4	4	3/4 x 4	13.0	893	71 7/8 x 33 3/4 x 52 1/2

\* Height does not include for bolt height.

Design and specifications subject to change without notice. Most updated spec sheets are available at [www.turboairinc.com](http://www.turboairinc.com).







## Open Display Merchandisers

### Horizontal / Drop-In Type European Straight



Model	CU./FT.	HP	AMPS	Crated Weight (lbs.)	L x D x H* (inches)
TOM-36UC-W(B, S)-N	5	3/4	7.5	368	36 1/4 x 32 1/4 x 32 1/2
TOM-48UC-W(B, S)-N	6.8	3/4	7.5	423	48 1/4 x 32 1/4 x 32 1/2
TOM-60UC-W(B, S)-N	8.6	3/4	7.5	482	60 1/4 x 32 1/4 x 32 1/2
TOM-72UC-W(B, S)-N	10.4	3/4 x 2	15.0	630	72 1/4 x 32 1/4 x 32 1/2

\* Height does not include for roller height.

### Vertical / Slim Profiles



Model	CU./FT.	#of Shelves	HP	AMPS	Crated Weight (lbs.)	L x D* x H† (inches)
TOM20-60N-W(B, S)	3.2	2	3/4	5.9	330	19 5/8 x 25 5/8 x 56 3/4
TOM20-75N-W(B, S)	4.8	4	3/4	6.9	440	19 5/8 x 25 5/8 x 72 1/2

\* Depth does not include for rear spacers. † Height does not include for caster height.

### Vertical / Medium Heights - Glass Side Panel



Model	CU./FT.	#of Shelves	HP	AMPS	Crated Weight (lbs.)	L x D* x H† (inches)
TOM-40MW(B, S)-N	9.3	3	3/4 x 2	15.5	521	39 1/8 x 26 7/8 x 60 1/4
TOM-50MW(B, S)-N	12.3	3	3/4 x 2	15.5	567	50 7/8 x 26 7/8 x 60 1/4

\* Depth does not include for rear spacers. † Height does not include for bolt height.

### Vertical / Medium Heights - Solid Side Panel



Model	CU./FT.	#of Shelves	HP	AMPS	Crated Weight (lbs.)	L x D* x H† (inches)
TOM-40MB-SP-(A)-N	9.3	3	3/4 x 2	15.5	521	39 1/8 x 26 7/8 x 60 1/4
TOM-50MB-SP-(A)-N	12.3	3	3/4 x 2	15.5	567	50 7/8 x 26 7/8 x 60 1/4

SP-N: stainless steel interior, SP-A-N: black coated interior

\* Depth does not include for rear spacers. † Height does not include for bolt height.

Design and specifications subject to change without notice. Most updated spec sheets are available at [www.turboairinc.com](http://www.turboairinc.com).

### Vertical / Full Heights - Glass Side Panel



Model	CU./FT.	#of Shelves	HP	AMPS	Crated Weight (lbs.)	L x D* x H† (inches)
TOM-40W(B, S)-N	14.4	4	3/4 x 2	15.5	642	39 1/8 x 27 x 78
TOM-50W(B, S)-N	19.0	4	3/4 x 2	15.5	733	50 7/8 x 27 x 78

\* Depth does not include for rear spacers. † Height does not include for bolt height.

### Vertical / Full Heights - Solid Side Panel



Model	CU./FT.	#of Shelves	HP	AMPS	Crated Weight (lbs.)	L x D* x H† (inches)
TOM-40B-SP(-A)-N	14.4	4	3/4 x 2	15.5	642	39 1/8 x 27 x 78
TOM-50B-SP(-A)-N	19.0	4	3/4 x 2	15.5	733	50 7/8 x 27 x 78

SP-N: stainless steel interior, SP-A-N: black coated interior \* Depth does not include for rear spacers. † Height does not include for bolt height.

### Vertical / Extra Deep - Glass Side Panel



Model	CU./FT.	#of Shelves	HP	AMPS	Crated Weight (lbs.)	L x D* x H† (inches)
TOM-36DXB(S)-N	17.1	4	3/4 x 2	15.5	631	35 5/8 x 33 1/4 x 78 3/8
TOM-48DXB(S)-N	23.2	4	3/4 x 2	15.5	727	47 5/8 x 33 1/4 x 78 3/8
TOM-60DXB(S)-N	29.4	4	3/4 x 2	15.5	822	59 5/8 x 33 1/4 x 78 3/8
TOM-72DXB(S)-N	34.1	8	3/4 x 4	18	1064	68 3/4 x 33 1/4 x 78 3/8

\* Depth does not include for safety bar and rear spacers. † Height does not include for bolt height.

### Vertical / Extra Deep - Solid Side Panel



Model	CU./FT.	#of Shelves	HP	AMPS	Crated Weight (lbs.)	L x D* x H† (inches)
TOM-36DXB-SP(-A)-N	17.1	4	3/4 x 2	15.5	631	35 5/8 x 33 1/4 x 78 3/8
TOM-48DXB-SP(-A)-N	23.2	4	3/4 x 2	15.5	727	47 5/8 x 33 1/4 x 78 3/8
TOM-60DXB-SP(-A)-N	29.4	4	3/4 x 2	15.5	822	59 5/8 x 33 1/4 x 78 3/8
TOM-72DXB-SP(-A)-N	34.1	8	3/4 x 4	18	1064	68 3/4 x 33 1/4 x 78 3/8

SP-N: stainless steel interior, SP-A-N: black coated interior

\* Depth does not include for safety bar and rear spacers. † Height does not include for bolt height.

Design and specifications subject to change without notice. Most updated spec sheets are available at [www.turboairinc.com](http://www.turboairinc.com).





## Open Display Merchandisers

### Vertical / Air Curtains



Model	CU./FT.	#of Shelves	HP	AMPS	Crated Weight (lbs.)	L x D* x H† (inches)
TOM-36EB(S)-N	16.5	4	3/4 x 2	15.5	648	36 x 29 1/2 x 80 1/2
TOM-48EB(S)-N	22.6	4	3/4 x 2	15.5	743	48 x 29 1/2 x 80 1/2
TOM-60EB(S)-N	28.6	4	3/4 x 2	15.5	842	60 x 29 1/2 x 80 1/2
TOM-72EB(S)-N	34.7	8	3/4 x 4	18	941	72 x 29 1/2 x 80 1/2
TOM-96EB(S)-N	45.2	8	3/4 x 4	18	1190	92 7/8 x 29 1/2 x 80 1/2

\* Depth does not include for rear spacers. † Height does not include for bolt height.

### Vertical / Air Curtains - Full Height Slim Profiles



Model	CU./FT.	#of Shelves	HP	AMPS	Crated Weight (lbs.)	L x D* x H† (inches)
TOM-40SEW(B)-N	16.1	4	3/4 x 2	15.5	642	39 7/8 x 25 3/4 x 80 1/4
TOM-50SEW(B)-N	21.3	4	3/4 x 2	15.5	733	51 5/8 x 25 3/4 x 80 1/4
TOM-60SEW(B)-N	26.5	4	3/4 x 2	15.5	824	64 x 25 3/4 x 80 1/4
TOM-75SEW(B)-N	32.2	8	3/4 x 4	18	1220	76 1/2 x 25 3/4 x 80 1/4
TOM-96SEW(B)-N	42.6	8	3/4 x 4	18	1402	100 1/8 x 25 3/4 x 80 1/4

\* Depth does not include rear spacers. † Height does not include for bolt height.

### Vertical / Air Curtains - Medium Height Slim Profiles



Model	CU./FT.	#of Shelves	HP	AMPS	Crated Weight (lbs.)	L x D* x H† (inches)
TOM-25MSEW(B)-N	7	3	3/4	8	461	28 x 25 3/4 x 60 3/4
TOM-40MSEW(B)-N	10.4	3	3/4 x 2	15.5	521	39 7/8 x 25 3/4 x 60 3/4
TOM-50MSEW(B)-N	13.8	3	3/4 x 2	15.5	567	51 5/8 x 25 3/4 x 60 3/4
TOM-60MSEW(B)-N	17.2	3	3/4 x 2	15.5	607	64 x 25 3/4 x 60 3/4
TOM-75MSEW(B)-N	20.9	6	3/4 x 4	18	992	76 1/2 x 25 3/4 x 60 3/4

\* Depth does not include rear spacers. † Height does not include for bolt height.

Design and specifications subject to change without notice. Most updated spec sheets are available at [www.turboairinc.com](http://www.turboairinc.com).

## Island Display Cases



Model	CU./FT.	# of Tiers	HP	AMPS	Crated Weight (lbs.)	L x D x H* (inches)
TIOM-20RSRB(S)-N	19.2	3	3/4 x 5	20.14	1230	48 x 67 7/8 x 65
TIOM-36RSRB(S)-N	25.6	3	3/4 x 6	24.17	1512	48 x 84 1/8 x 65
TIOM-48RSRB(S)-N	28.8	3	3/4 x 6	24.17	1642	48 x 96 x 65
TIOM-36RSB-N	20	3	3/4 x 4	16.43	1225	48 x 61 3/4 x 65
TIOM-48RSB-N	23.2	3	3/4 x 4	16.43	1333	48 x 73 5/8 x 65
TIOM-48RRB(S)-N	11.2	3	3/4 x 4	15.48	853	48 x 48 x 65
TIOM-48RB-N	5.6	3	3/4 x 2	7.74	562	48 x 25 1/2 x 65

\* Height does not include for bolt height.

## Island Display Cases - Square type



Model	CU./FT.	# of Tiers	HP	AMPS	Crated Weight (lbs.)	L x D x H* (inches)
TIOM-24CSCB-N	35.01	3	3/4 x 6	24.17	1,321	47 1/8 x 72 3/8 x 64 1/2
TIOM-36CSCB-N	41.9	3	3/4 x 6	24.17	1,512	47 1/8 x 84 5/8 x 64 1/2
TIOM-48CSCB-N	47.9	3	3/4 x 6	24.17	1,642	47 1/8 x 96 1/2 x 64 1/2
TIOM-36CSB-N	30.1	3	3/4 x 4	16.43	1,225	47 1/8 x 62 x 64 1/2
TIOM-48CSB-N	36	3	3/4 x 4	16.43	1,333	47 1/8 x 73 7/8 x 64 1/2
TIOM-48CCB-N	23.7	3	3/4 x 4	15.48	853	47 1/8 x 48 3/8 x 64 1/2
TIOM-48CB-N	11.9	3	3/4 x 2	7.74	562	47 1/8 x 25 3/4 x 64 1/2

\* Height does not include for bolt height.

## Island Display Cases



Model	CU./FT.	# of Shelves	HP	AMPS	Crated Weight (lbs.)	L x D x H* (inches)
TIOM-36SB(S)-N	14.4	6	3/4 x 2	8.7	630	38 5/8 x 48 x 65
TIOM-48SB(S)-N	17.6	6	3/4 x 2	8.7	747	50 3/8 x 48 x 65

\* Height does not include for bolt height.

Design and specifications subject to change without notice. Most updated spec sheets are available at [www.turboairinc.com](http://www.turboairinc.com).



## Security Cover

### SC - Fabric Cover



Model	Available Model	L x D x H (inches)	Shipping Weight (lbs.)
SC-40(B)	TOM-40W(B, S)-N	36 1/8 x 13 1/4 x 52 3/4	14
SC-50(B)	TOM-50W(B, S)-N	48 x 13 1/4 x 52 3/4	15
SC-36-DXB	TOM-36DXB(S)-N	32 3/4 x 13 1/4 x 51 3/4	10
SC-48-DXB	TOM-48DXB(S)-N	44 3/4 x 13 1/4 x 51 3/4	12
SC-60-DXB	TOM-60DXB(S)-N	56 3/4 x 13 1/4 x 51 3/4	13
SC-72-DXB	TOM-72DXB(S)-N	66 x 13 1/4 x 51 3/4	15
SC-36-E(B)	TOM-36EB(S)-N	32 3/4 x 13 1/4 x 51 3/4	8
SC-48-E(B)	TOM-48EB(S)-N	44 3/4 x 13 1/4 x 51 3/4	9
SC-60-E(B)	TOM-60EB(S)-N	56 3/4 x 13 1/4 x 51 3/4	11
SC-72-E(B)	TOM-72EB(S)-N	68 3/4 x 13 1/4 x 51 3/4	13
SC-96-E(B)	TOM-96EB(S)-N	89 1/2 x 13 1/4 x 51 3/4	15
SC-40MW(B)	TOM-40MW(B, S)-N	36 1/8 x 13 1/4 x 30 1/2	12
SC-50MW(B)	TOM-50MW(B, S)-N	48 x 13 1/4 x 30 1/2	14

### SCS - Stainless Steel



Model	Available Model	L x D x H (inches)	Shipping Weight (lbs.)
SCS-40	TOM-40W(B, S)-N	36 1/4 x 35/8 x 50 1/2	16
SCS-50	TOM-50W(B, S)-N	48 x 35/8 x 50 1/2	20
SCS-36-DX	TOM-36DXB(S)-N	33 x 2 1/8 x 48	14
SCS-48-DX	TOM-48DXB(S)-N	44 3/4 x 2 1/8 x 48	18
SCS-60-DX	TOM-60DXB(S)-N	28 3/8 x 2 1/8 x 48 (2)	26
SCS-72-DX	TOM-72DXB(S)-N	33 x 2 1/8 x 48 (2)	27
SCS-36-E	TOM-36EB(S)-N	32 1/2 x 2 1/4 x 49 3/8	16
SCS-48-E	TOM-48EB(S)-N	44 3/8 x 2 1/4 x 49 3/8	21
SCS-60-E	TOM-60EB(S)-N	28 1/8 x 2 1/4 x 49 3/8 (2)	30
SCS-72-E	TOM-72EB(S)-N	34 x 2 1/4 x 49 3/8 (2)	31
SCS-96-E	TOM-96EB(S)-N	44 3/8 x 2 1/4 x 49 3/8 (2)	42
SCS-40-M	TOM-40MW(B, S)-N	36 1/8 x 1 1/2 x 34 1/8	12
SCS-50-M	TOM-50MW(B, S)-N	48 x 1 1/2 x 34 1/8	16

### SCM - Hard Plastic



Model	Available Model	L x D x H (inches)	Shipping Weight (lbs.)
SCM-40(B)	TOM-40W(B, S)-N	38 x 11 1/2 x 64	85
SCM-50(B)	TOM-50W(B, S)-N	49 1/2 x 11 1/2 x 64	95
SCM-36-DXB	TOM-36DXB(S)-N	33 1/4 x 11 1/4 x 62 3/4	81
SCM-48-DXB	TOM-48DXB(S)-N	45 1/4 x 11 1/4 x 62 3/4	92
SCM-60-DXB	TOM-60DXB(S)-N	57 1/4 x 11 1/4 x 62 3/4	103
SCM-72-DXB	TOM-72DXB(S)-N	66 3/8 x 11 1/4 x 62 1/8	106
SCM-36-E(B)	TOM-36EB(S)-N	32 7/8 x 11 1/4 x 64 1/4	81
SCM-48-E(B)	TOM-48EB(S)-N	44 7/8 x 11 1/4 x 64 1/4	92
SCM-60-E(B)	TOM-60EB(S)-N	56 7/8 x 11 1/4 x 64 1/4	103
SCM-72-E(B)	TOM-72EB(S)-N	67 7/8 x 11 1/4 x 64 1/4	106

### SCW - Wire Type



Model	Available Model	L x D x H (inches)	Shipping Weight (lbs.)
SCW-30LB	TOM-30LW(B, S)-N	23 1/8 x 23 5/8 x 20	12
SCW-40LB	TOM-40LW(B, S)-N	34 1/8 x 23 5/8 x 20	16
SCW-50LB	TOM-50LW(B, S)-N	46 x 23 5/8 x 20	21
SCW-60LB	TOM-60LW(B, S)-N	29 x 23 5/8 x 20 (2)	27
SCW-75LB	TOM-75LW(B, S)-N	35 1/4 x 23 5/8 x 20 (2)	32
SCW-30SB	TOM-30SW(B, S)-N	23 1/8 x 23 5/8 x 15 1/2	11
SCW-40SB	TOM-40SW(B, S)-N	34 1/8 x 23 5/8 x 15 1/2	16
SCW-50SB	TOM-50SW(B, S)-N	46 x 23 5/8 x 15 1/2	20
SCW-60SB	TOM-60SW(B, S)-N	29 x 23 5/8 x 15 1/2 (2)	26
SCW-75SB	TOM-75SW(B, S)-N	35 1/4 x 23 5/8 x 15 1/2 (2)	31

### Night Curtain Cover - Clear vinyl\*



Model	Available Model	L x D x H (inches)	Shipping Weight (lbs.)
NCT-30-W(B)	TOM-30L/SW(B, S)-N	27 1/4 x 2 x 2 1/2	10
NCT-40-W(B)	TOM-40L/SW(B, S)-N	38 1/4 x 2 x 2 1/2	12
NCT-50-W(B)	TOM-50L/SW(B, S)-N	50 x 2 x 2 1/2	14

Model	Available Model	L x D x H (inches)	Shipping Weight (lbs.)
NCT-60-W(B)	TOM-60L/SW(B, S)-N	60 x 2 x 2 1/2	18
NCT-75-W(B)	TOM-75L/SW(B, S)-N	75 x 2 x 2 1/2	22

\* Night cover can not be used in conjunction with a TOMD dry case.

## Bakery Display Cases

### Curved Glass Bakery Cases

Refrigerated / Dry / Refrigerated & Dry Case Combination



Model	CU./FT.	#of Shelves	HP	AMPS	Crated Weight (lbs.)	L x D x H* (inches)
TCGB-36-W(B)-N	11.8	2	1/3	7.5	522	36 1/2 x 34 1/4 x 49 7/8
TCGB-48-W(B)-N	15.6	2	1/3	7.5	637	48 1/2 x 34 1/4 x 49 7/8
TCGB-60-W(B)-N	19.4	2	3/4	8.6	743	60 1/2 x 34 1/4 x 49 7/8
TCGB-72-W(B)-N	23.2	2	3/4	8.6	847	72 1/2 x 34 1/4 x 49 7/8
TCGB-36DR-W(B)	11.8	2	-	0.4	437	36 1/2 x 34 1/4 x 49 7/8
TCGB-48DR-W(B)	15.6	2	-	0.6	551	48 1/2 x 34 1/4 x 49 7/8
TCGB-60DR-W(B)	19.4	2	-	0.7	639	60 1/2 x 34 1/4 x 49 7/8
TCGB-72DR-W(B)	23.2	2	-	0.7	743	72 1/2 x 34 1/4 x 49 7/8
TCGB-60CO-W(B)-N	10.3 x 2	4	1/3	7.5	761	60 1/2 x 34 1/4 x 49 7/8
TCGB-72CO-W(B)-N	12.2 x 2	4	1/3	7.5	864	72 1/2 x 34 1/4 x 49 7/8

\* Height does not include for bolt height.

### European Straight Front Bakery Cases

Refrigerated / Dry / Refrigerated & Dry Case Combination / Freezer



Model	CU./FT.	#of Shelves	HP	AMPS	Crated Weight (lbs.)	L x D x H* (inches)
TCGB-36UF-W(B, S)-N	11.8	2	1/3	7.5	551	36 1/2 x 33 1/8 x 50 1/8
TCGB-48UF-W(B, S)-N	15.6	2	1/3	7.5	666	48 1/2 x 33 1/8 x 50 1/8
TCGB-60UF-W(B, S)-N	19.4	2	3/4	8.6	776	60 1/2 x 33 1/8 x 50 1/8
TCGB-72UF-W(B, S)-N	23.2	2	3/4	8.6	992	72 1/2 x 33 1/8 x 50 1/8
TCGB-36UF-DR-W(B, S)	11.8	2	-	0.4	465	36 1/2 x 33 1/8 x 50 1/8
TCGB-48UF-DR-W(B, S)	15.6	2	-	0.6	580	48 1/2 x 33 1/8 x 50 1/8
TCGB-60UF-DR-W(B, S)	19.4	2	-	0.7	672	60 1/2 x 33 1/8 x 50 1/8
TCGB-72UF-DR-W(B, S)	23.2	2	-	0.7	888	72 1/2 x 33 1/8 x 50 1/8
TCGB-60UF-CO-W(B, S)-N	10.3 x 2	4	1/3	7.5	844	60 1/2 x 33 1/8 x 50 1/8
TCGB-72UF-CO-W(B, S)-N	12.2 x 2	4	1/3	7.5	1,060	72 1/2 x 33 1/8 x 50 1/8
TCGBF-50S-N	16.88	4	1HP x 2	13	788	49 5/8 x 33 1/2 x 52 1/4

\* Height does not include for bolt height.

### Bakery Cases



Model	CU./FT.	#of Shelves	HP	AMPS	Crated Weight (lbs.)	L x D x H* (inches)
TBP36-46NN-W(B, S)	9	1	1/3	6	493	35 3/8 x 27 1/2 x 44
TBP48-46NN-W(B, S)	12.4	1	1/3	6.3	581	47 1/4 x 27 1/2 x 44
TBP60-46NN-W(B, S)	15.7	1	3/4	6.5	665	59 x 27 1/2 x 44
TBP36-54NN-W(B, S)	12.5	2	1/3	6	549	35 3/8 x 27 1/2 x 51 7/8
TBP48-54NN-W(B, S)	17.2	2	3/4	6.5	642	47 1/4 x 27 1/2 x 51 7/8
TBP60-54NN-W(B, S)	21.8	2	3/4	6.8	741	59 x 27 1/2 x 51 7/8

\* Height does not include for caster height.

Design and specifications subject to change without notice. Most updated spec sheets are available at [www.turboairinc.com](http://www.turboairinc.com).





## Bakery Display Cases

### Bakery Cases - Front Glass Opening



Model	CU./FT.	#of Shelves	HP	AMPS	Crated Weight (lbs.)	L x D x H* (inches)
TBP36-46FN-W(B, S)	9	1	1/3	6.3	503	35 3/8 x 27 1/2 x 44
TBP48-46FN-W(B, S)	12.4	1	1/3	6.8	596	47 1/4 x 27 1/2 x 44
TBP60-46FN-W(B, S)	15.7	1	3/4	7.3	685	59 x 27 1/2 x 44
TBP36-54FN-W(B, S)	12.5	2	1/3	7	549	35 3/8 x 27 1/2 x 51 7/8
TBP48-54FN-W(B, S)	17.2	2	3/4	8.2	642	47 1/4 x 27 1/2 x 51 7/8
TBP60-54FN-W(B, S)	21.8	2	3/4	8.7	741	59 x 27 1/2 x 51 7/8

\* Height does not include for caster height.

### Drop-In Type Bakery Cases



Model	CU./FT.	#of Shelves	HP	AMPS	Crated Weight (lbs.)	L x D x H* (inches)
TBP36-46FDN	9	1	1/3	6.3	503	37 x 29 3/4 x 44
TBP48-46FDN	12.4	1	1/3	6.8	596	48 7/8 x 29 3/4 x 44
TBP60-46FDN	15.7	1	3/4	7.3	685	60 5/8 x 29 3/4 x 44
TBP36-54FDN	12.5	2	1/3	7	549	37 x 29 3/4 x 51 7/8
TBP48-54FDN	17.2	2	3/4	8.2	642	48 7/8 x 29 3/4 x 51 7/8
TBP60-54FDN	21.8	2	3/4	8.7	741	60 5/8 x 29 3/4 x 51 7/8

\* Height does not include for caster height.

### Sandwich & Cheese Cases



Model	Load Line CU./FT.	HP	AMPS	Crated Weight (lbs.)	L x D x H* (inches)
TOS-30NN-W(B, S)	1.31	1/3	8	464	30 1/4 x 35 3/8 x 30 7/8
TOS-40NN-W(B, S)	1.83	1/3	8	551	40 1/4 x 35 3/8 x 30 7/8
TOS-50NN-W(B, S)	2.35	1/3	8	639	50 1/4 x 35 3/8 x 30 7/8
TOS-30NN-D-W(B, S)	1.31	1/3	8	481	30 1/4 x 35 3/8 x 40
TOS-40NN-D-W(B, S)	1.83	1/3	8	572	40 1/4 x 35 3/8 x 40
TOS-50NN-D-W(B, S)	2.35	1/3	8	663	50 1/4 x 35 3/8 x 40
TOS-30PN-W(B, S)	1.38	1/3	8	455	30 x 35 3/8 x 34
TOS-40PN-W(B, S)	1.93	1/3	8	542	40 x 35 3/8 x 34
TOS-50PN-W(B, S)	2.48	1/3	8	625	50 x 35 3/8 x 34

\* Height does not include for caster height.

Design and specifications subject to change without notice. Most updated spec sheets are available at [www.turboairinc.com](http://www.turboairinc.com).

## Curved Glass Deli Display Cases



Model	CU./FT.	#of Shelves	HP	AMPS	Crated Weight (lbs.)	L x D x H* (inches)
TCDD-36H-W(B)-N	12.1	2	1/3	7	492	36 1/2 x 30 x 49 7/8
TCDD-48H-W(B)-N	16.2	2	1/3	7	580	48 1/2 x 30 x 49 7/8
TCDD-72H-W(B)-N	24.7	2	3/4	7.8	747	72 1/2 x 30 x 49 7/8
TCDD-96H-W(B)-N	33.2	4	3/4	7.8	1,102	96 1/2 x 30 x 49 7/8

\* Height does not include for bolt height.

## Glass Door Merchandisers

### Swing Door Refrigerators



Model	CU./FT.	Bottle Capacity (12oz)	#of Shelves	HP	AMPS	Crated Weight (lbs.)	L x D* x H† (inches)
TGM-5SD: -N6	4.45	80	2	1/8	1.4	183	25 x 23 1/4 x 30 1/2
TGM-7SD: -N6	6.2	136	3	1/8	1.4	202	25 x 23 1/4 x 38 1/8
TGM-10SD: -N6	8.12	236	3	1/5	1.9	241	25 3/4 x 23 1/4 x 54 3/8
TGM-12SD: -N6	10.19	236 (295 w/ add shelf)	3	1/5	1.9	257	25 3/4 x 23 1/4 x 63
TGM-15SD: -N6	14.43	315 (378 w/ add shelf)	4	1/5	2.1	281	26 3/8 x 24 3/4 x 75 5/8
TGM-20SD: -N6	16.01	355 (426 w/ add shelf)	4	1/5	2.4	292	27 x 26 3/8 x 77
TGM-23SD: -N6	19.4	405 (486 w/ add shelf)	4	1/5	2.7	325	27 x 30 1/4 x 77
TGM-35SD: -N	29.06	690 (828 w/ add shelf)	8	1/3	3.3	450	39 1/2 x 31 7/8 x 77
TGM-47SD: -N	41.71	900 (1,080 w/ add shelf)	8	1/3	3.4	510	51 1/8 x 31 7/8 x 77
TGM-72SD: -N	68.4	1,475 (1,770 w/ add shelf)	12	1/2	7.9	732	78 x 31 7/8 x 77

\* Depth does not include for door handles. † Height does not include for leg height.

### Swing Door Freezers



Model	CU./FT.	#of Shelves	HP	AMPS	Crated Weight (lbs.)	L x D* x H† (inches)
TGF-5SD: -N	4.26	2	1/3	2.3	195	25 x 23 1/4 x 30 1/2
TGF-10SD: -N	7.92	3	1/3	2.6	267	25 3/4 x 23 1/4 x 54 3/8
TGF-15SD: -N	13.2	4	1/2	5.6	313	26 3/8 x 24 3/4 x 75 5/8
TGF-23SD: -N	17.99	4	1/2	6	365	27 x 30 1/4 x 77
TGF-35SD: -N	28.44	8	3/4	8.1	519	39 1/2 x 31 7/8 x 77
TGF-47SD: -N	39	8	3/4	10.4	590	51 1/8 x 31 7/8 x 77
TGF-72SD: -N	60.43	12	1 1/2 x 2	15.7	915	78 x 31 7/8 x 77

\* Depth does not include for door handles. † Height does not include for leg height.

Design and specifications subject to change without notice. Most updated spec sheets are available at [www.turboairinc.com](http://www.turboairinc.com).



## Glass Door Merchandisers

### Full View Swing Door Refrigerators



Model	CU./FT.	Bottle Capacity (12 oz)	#of Shelves	HP	AMPS	Crated Weight (lbs.)	L x D* x H† (inches)
TGM-15SDH:-N6	14.7	315 (378 w/ add shelf)	4	1/5	2.1	281	26 3/8 x 24 3/4 x 75 5/8
TGM-23SDH:-N6	19.02	405 (486 w/ add shelf)	4	1/5	2.2	325	27 x 30 1/4 x 77
TGM-35SDH:-N	31.7	690 (828 w/ add shelf)	8	1/3	3.3	450	39 1/2 x 31 7/8 x 77
TGM-47SDH:-N	44.22	900 (1080 w/ add shelf)	8	2/5	6.6	510	51 1/8 x 31 7/8 x 77
TGM-72SDH:-N	70.5	1475 (1770 w/ add shelf)	12	1/2	7.8	732	78 x 31 7/8 x 77

\* Depth does not include for door handles. † Height does not include for leg height.

### Full View Swing Door Freezers



Model	CU./FT.	#of Shelves	HP	AMPS	Crated Weight (lbs.)	L x D* x H† (inches)
TGF-23SDH:-N	17.94	4	1/2	5.8	365	27 x 30 1/4 x 77
TGF-35SDH:-N	30.94	8	2/3	6.8	519	39 1/2 x 31 7/8 x 77
TGF-47SDH:-N	42.12	8	3/4	9.1	590	51 1/8 x 31 7/8 x 77
TGF-72SDH:-N	62.2	12	2/3 x 2	13.6	915	78 x 31 7/8 x 77

\* Depth does not include for door handles. † Height does not include for leg height

## Jumbo Glass Door Merchandisers

### Full View Swing Door Refrigerators



Model	CU./FT.	Bottle Capacity (12 oz)	#of Shelves	HP	AMPS	Crated Weight (lbs.)	L x D* x H† (inches)
TJMR-30SDW(B)-N	30	1,008	6	1/3	3	509	36 5/8 x 38 x 80 1/2
TJMR-55SDW(B)-N	55	1,848	12	2/5	6.4	756	65 1/8 x 38 x 80 1/2
TJMR-85SDW(B)-N	85	4,704	18	1/2	7.5	1,124	97 1/2 x 38 x 80 1/2

\* Depth does not include door handles. † Height does not include leg height.

Design and specifications subject to change without notice. Most updated spec sheets are available at [www.turboairinc.com](http://www.turboairinc.com).

## Full View Swing Door Freezers



Model	CU./FT.	#of Shelves	HP	AMPS	Crated Weight (lbs.)	L x D* x H† (inches)
TJMF-30SDW(B)-N	30	6	4/5	7.1	547	365/8 x 38 x 801/2
TJMF-55SDW(B)-N	55	12	1	9.4	798	651/8 x 38 x 801/2
TJMF-85SDW(B)-N	85	18	4/5 x 2	15.7	1,208	971/2 x 38 x 801/2

\* Depth does not include door handles. † Height does not include leg height.

## Ice Merchandisers



Model	CU./FT.	# of Shelves (Rack/Bottom)	HP	AMPS	Crated Weight (lbs.)	L x D* x H† (inches)
TJMI-30SDW(B)-N	30	3 (2/1)	3/5	6.2	547	365/8 x 38 x 801/2
TJMI-55SDW(B)-N	55	6 (4/2)	4/5	7	798	651/8 x 38 x 801/2

\* Depth does not include for door handles. † Height does not include for leg height

## Underbar Equipment

### Back Bars - Solid Doors & Glass Doors



Model	CU./FT.	Capacity (1/2 Barrels)	# of Shelves (Sub Shelves)	HP	AMPS	Crated Weight (lbs.)	L x D* x H† (inches)
TBB-1SBD-N6	7.76	1	2	1/8	1.3	212	235/8 x 293/4 x 341/2
TBB-2SBD-N6	19	2	4 (2)	1/5	1.7	298	583/4 x 271/4 x 371/8
TBB-3SBD-N6	23	3	4 (2)	1/5	1.9	320	69 x 271/4 x 371/8
TBB-4SBD-N	36.47	4	6 (2)	1/3	2.9	479	903/8 x 271/4 x 371/8
TBB-2SGD-N	19	2	4 (2)	1/3	2.8	331	583/4 x 271/4 x 371/8
TBB-3SGD-N	23	3	4 (2)	1/3	2.8	375	69 x 271/4 x 371/8
TBB-4SGD-N	36.47	4	6 (2)	1/3	3.3	545	903/8 x 271/4 x 371/8

\* Depth does not include for door handles and rear spacers. † Height does not include for caster height.

Design and specifications subject to change without notice. Most updated spec sheets are available at [www.turboairinc.com](http://www.turboairinc.com).



## Underbar Equipment

### Narrow Back bars - Solid Doors & Glass Doors



Model	CU./FT.	Capacity (1/2 Barrels)	# of Shelves	HP	AMPS	Crated Weight (lbs.)	L x D* x H† (inches)
TBB-24-48SBD-N6	12.2	-	4	1/5	1.8	253	49 1/8 x 24 1/2 x 35 3/8
TBB-24-60SBD-N6	16.46	2	4	1/5	2	279	61 1/8 x 24 1/2 x 35 3/8
TBB-24-72SBD-N6	20.62	3	6	1/5	2	333	73 1/8 x 24 1/2 x 35 3/8
TBB-24-48SGD-N	12.2	-	4	1/3	2.6	264	49 1/8 x 24 1/2 x 35 3/8
TBB-24-60SGD-N	16.46	2	4	1/3	2.9	307	61 1/8 x 24 1/2 x 35 3/8
TBB-24-72SGD-N	20.62	3	6	1/3	2.9	339	73 1/8 x 24 1/2 x 35 3/8

\* Depth does not include for door handles and rear spacers. † Height does not include for caster height.

### Beer Dispensers



Model	CU./FT.	Capacity (1/2 Barrels)	HP	AMPS	Crated Weight (lbs.)	L x D* x H† (inches)
TBD-1SDD-N6	7.76	1	1/8	1.1	185	23 5/8 x 29 3/4 x 34 1/2
TBD-1SBD-N6	7.76	1	1/8	1.1	185	23 5/8 x 29 3/4 x 34 1/2
TBD-2SDD-N6	20.9	2	1/5	1.9	298	58 3/4 x 27 1/4 x 37 1/8
TBD-2SBD-N6	20.9	2	1/5	1.9	298	58 3/4 x 27 1/4 x 37 1/8
TBD-3SDD-N	25.4	3	1/3	2.5	320	69 x 27 1/4 x 37 1/8
TBD-3SBD-N	25.4	3	1/3	2.5	320	69 x 27 1/4 x 37 1/8
TBD-4SDD-N	36.47	4	1/3	2.7	443	90 3/8 x 27 1/4 x 37 1/8
TBD-4SBD-N	36.47	4	1/3	2.7	443	90 3/8 x 27 1/4 x 37 1/8

\* Depth does not include for door handles and rear spacers. † Height does not include for caster and draft arm height.

### Club Top Beer Dispensers



Model	CU./FT.	Capacity (1/2 Barrels)	HP	AMPS	Crated Weight (lbs.)	L x D* x H† (inches)
TCB-2SDD-N6	20.9	2	1/5	1.3	357	58 7/8 x 27 1/4 x 38 5/8
TCB-2SBD-N6	20.9	2	1/5	1.3	357	58 7/8 x 27 1/4 x 38 5/8
TCB-3SDD-N6	25.4	3	1/5	2.3	378	69 1/8 x 27 1/4 x 38 5/8
TCB-3SBD-N6	25.4	3	1/5	2.3	378	69 1/8 x 27 1/4 x 38 5/8
TCB-4SDD-N	36.47	4	1/3	2.6	448	90 3/8 x 27 1/4 x 38 5/8
TCB-4SBD-N	36.47	4	1/3	2.6	448	90 3/8 x 27 1/4 x 38 5/8

\* Depth does not include for door handles and rear spacers. † Height does not include for caster and draft arm height.

Design and specifications subject to change without notice. Most updated spec sheets are available at [www.turboairinc.com](http://www.turboairinc.com).

## Bottle Coolers



Model*	CU./FT.	Capacity (12 oz. btl / 12 oz. cans)	# of Dividers	# of Bottom Shelves	HP	AMPS	Crated Weight (lbs.)	L x D <sup>‡</sup> x H <sup>§</sup> (inches)
TBC-24SD/SB-N6	3.6	5 / 6.2 cases <sup>†</sup>	2	1	1/8	1.4	175	24 7/8 x 26 1/2 x 33 1/4
TBC-36SD/SB-N6	8.5	12 / 15 cases <sup>†</sup>	2	1	1/8	1.6	221	36 3/4 x 26 1/2 x 33 1/4
TBC-50SD/SB-N6	13.5	18 / 22.8 cases <sup>†</sup>	3	2	1/5	1.7	256	50 x 26 1/2 x 33 1/4
TBC-65SD/SB-N6	18.5	22 / 32.5 cases <sup>†</sup>	4	3	1/5	1.7	326	64 3/8 x 26 1/2 x 33 1/4
TBC-80SD/SB-N	22.6	30.8 / 43.2 cases <sup>†</sup>	5	4	1/3	2.5	378	80 1/2 x 26 1/2 x 33 1/4
TBC-95SD/SB-N	30.3	38 / 55.8 cases <sup>†</sup>	6	5	1/3	2.5	397	95 x 26 1/2 x 33 1/4

\* Digital type does not apply. † Case capacity refers to 24 pack. ‡ Depth does not include cap catcher and rear spacers. § Height does not include caster height.

## Glass / Mug Frosters



Model*	CU./FT.	Capacity (8"(36 oz) Mug / 10 oz Stein)	# of Shelves	# of Bottom Shelves	HP	AMPS	Crated Weight (lbs.)	L x D <sup>‡</sup> x H <sup>§</sup> (inches)
TBC-24SD/SB-GF-N6	4.56	48 / 129	2	2	1/8	0.9	190	24 7/8 x 26 1/2 x 33 1/4
TBC-36SD/SB-GF-N	9.74	93 / 227	5	2	1/3	1.6	230	36 1/4 x 26 1/2 x 33 1/4
TBC-50SD/SB-GF-N	14.49	140 / 386	5	2	1/3	1.7	280	50 x 26 1/2 x 33 1/4

\* Digital type does not apply. ‡ Depth does not include rear spacers. § Height does not include bolt height.























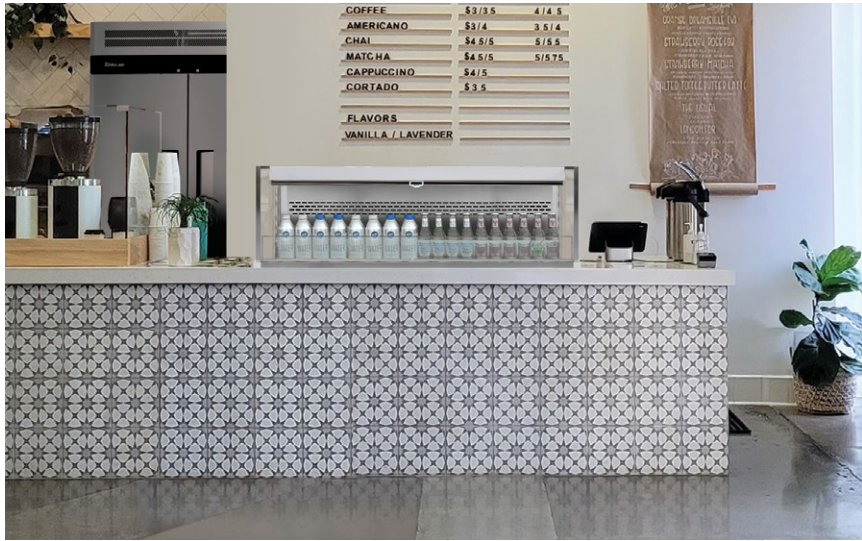


















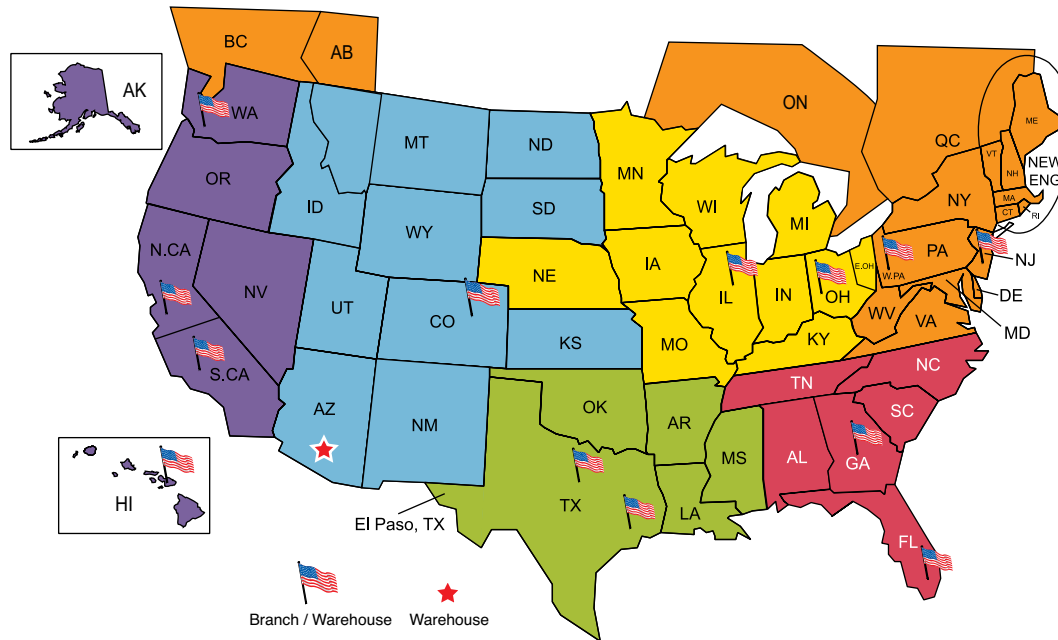








# Sales Territory Map



**Keith Kim 310-505-7420**  
**Christopher Kim 925-719-8808**  
 (Northern CA & Nevada)

**Sun Kim 213-309-2788**  
**John McDowell & Martha Cano**  
**602-276-4969**

**Joshua Ryoo 562-577-2099**

**Chris Bae 630-442-4786**

**Andrew Kim 562-307-4355**

**Phillip Han** 562-305-3837  
**Ro Doyle & Brian Mahoney**  
201-525-1433  
**Owen Freeman**  
978-281-2700  
**Blake Sharkey** 800-347-9541

**Mike Andrus**  
National Accounts

214-770-3126

**Rick Blinson**  
National Accounts

678-814-2201

**D. J. Kourie**  
National Accounts

**330-447-8411**

**Carlos Fuentes**  
National Accounts

310-745-9321

**Bill Smith**  
National Accounts

314-378-0524

**Suzanne Painter-Suplee**  
Consultant

602-418-6725

REFRIGERATOR MANUFACTURER  
***Turbo air***

**800-627-0032**

**[www.turboairinc.com](http://www.turboairinc.com)**



Self-Cleaning Condenser Video





**TURBO AIR**  
**REFRIGERATION REINVENTED**