

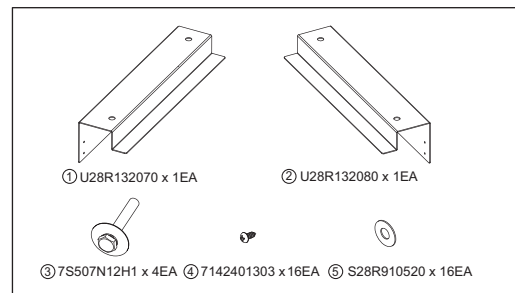
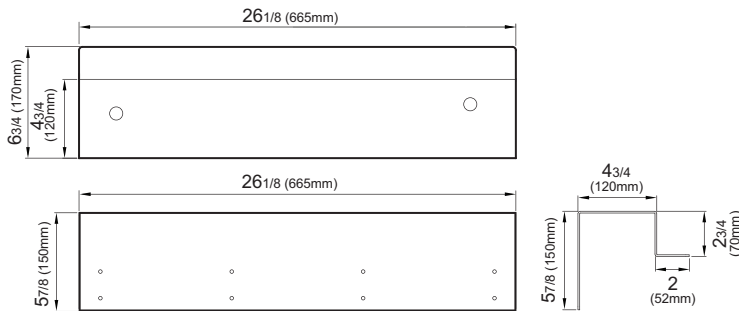
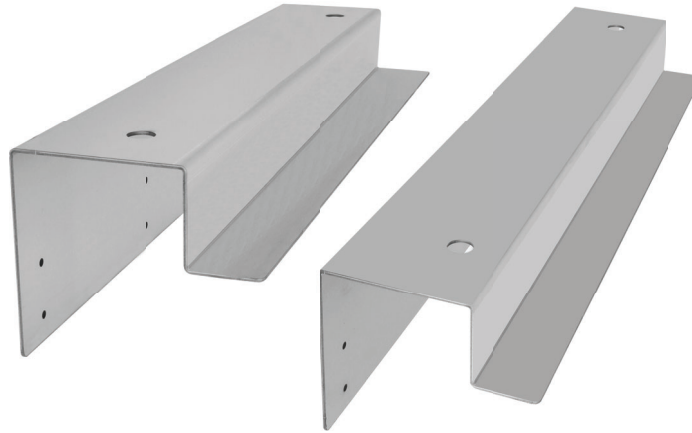
**REFRIGERATOR MANUFACTURER**  
**Turbo air**  
 more durable, efficient, beautiful

4184 E. Conant St.  
 Long Beach, CA 90808  
 Tel. 310-900-1000  
 Fax. 310-900-1077  
[www.turboairinc.com](http://www.turboairinc.com)

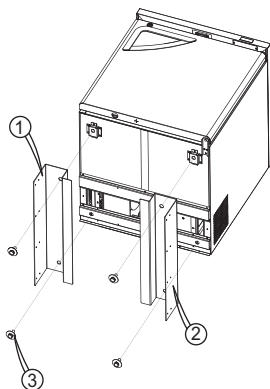
Project:	
Model #:	
Item #:	
Available W/H:	Qty:
Approval:	
AIA #:	SIS #:
CSI Section 11400	

## Stacking Kit

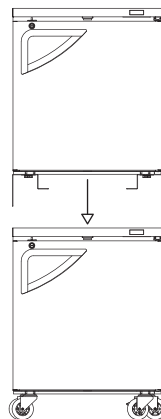
**SKIT-28**



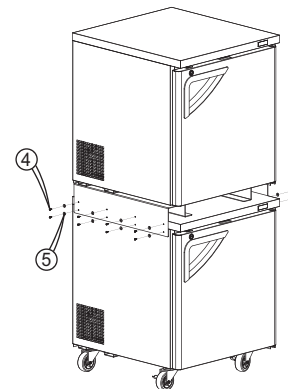
### Installation



**1**  
 Install ① and ② with ③ to refrigerator that is going to be on top.  
 Don't fasten ③ all the way yet.



**2**  
 Place refrigerator from step 1 on top of refrigerator that is going to be on the bottom.  
**WARNING:** Top refrigerator is approximately 170lb.



**3**  
 Fasten ④ with ⑤ to side of refrigerator on the bottom.  
 Please make sure ① and ② is aligned to side of refrigerator if it is hard to fasten, please use  $\frac{1}{8}$  drill bit to make hole  
 Fasten ③ all the way.

Model	Dimension (L x D x H) (in.)	Available model	Shipping Weight (lbs.)
<b>SKIT-28</b>	<b>32 1/2 x 21 1/4 x 49 3/8</b>	<b>PUR-28-N(-L), PUR-28-D2-N, PUR-28-G-N(-L), PUF-28-N(-L), PUF-28-D2-N MUR-28-N, MUR-28L-N6, MUF-28-N, EUR-28-N6-V, EUF-28-N-V</b>	<b>16</b>