

TURBO AIR
PRO SERIES

The Turbo air Principle

**No Innovation
No Future**

REFRIGERATOR MANUFACTURER
Turbo air



My 53-Year Journey with Refrigeration

At 13 years old, I began my part-time job to pay for school, which started my 53-year career in refrigeration. I found that I had an aptitude for the work, and more importantly, I enjoyed it. It didn't take long until it wasn't just about raising money for school. I kept at it, and I dropped out of college my freshman year to start my own refrigeration business. I invested my last \$30, taking a risk that paid off. It grew rapidly, and when I was 25 I founded South Korea's first plant to mass-produce commercial refrigerators.

In 1985, I emigrated from South Korea to Los Angeles, where I continued to follow my passions. I opened my business selling and repairing refrigerators. I also constructed restaurants and grocery stores, finding the refrigeration systems and layouts that best fit their needs. Through my combined experiences, I became an expert on the environments which refrigerators operated in and all my competitor's products. As I built my expertise, I noticed that there was little-to-no technological advancement. The products had remained the same over several decades, across all major manufacturers. I knew there was a better way.

I founded Turbo Air with innovation and consumer convenience at the forefront. Turbo Air was the first company to apply digital control in commercial refrigerators, in 1997, and now it's the industry standard. I pioneered the use of automatic fans, temperature control and external monitoring, and indoor illumination for under-counter and salad/sandwich units. I work towards improving Turbo Air products every day, and I continue to lead the charge with my patented Self-Cleaning Condenser.

This revolutionary device marks the end of the 100-year-old problem, rooted in ill-maintained condensers.

My innovation goes beyond technology, as I am the trailblazer of innovation in customer service. One of the many precedents I have set in this industry is direct delivery to dealers, with 13 warehouse locations nationwide. Multiple locations ensure damage free delivery within 1-2 days. Also, I utilize in-house technicians, who complete 95% of service calls within 3 business days. I am also the first to implement the MSP (minimum sales price) program in the refrigeration industry to alleviate excessive competition among dealers. I am always looking to improve, not only the products but your experience with customer service.

It has been 53 wonderful years, and my journey still continues.

Sincerely,

A handwritten signature in cursive script that reads "Brian S. Kim". The ink is dark and the signature is fluid, with a large initial 'B' and a stylized 'S'.

Brian S. Kim
Chief Engineer & CEO



Philosophy

The best products and services for every culinary master

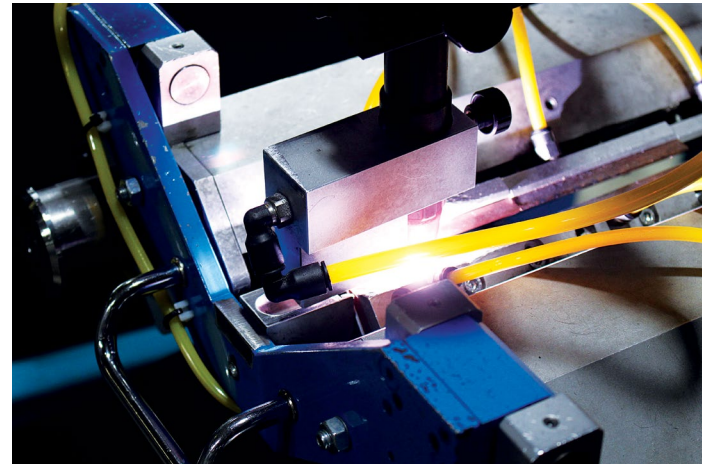
Our philosophy is rooted in the continued sustainability of our environment while achieving unparalleled reliability for our customers. Thus, the PRO Series was created. Utilizing eco-friendly refrigerant, achieving lower energy consumption, and with the highest performance amongst our competitors, we are bringing the best of the best into your kitchen.

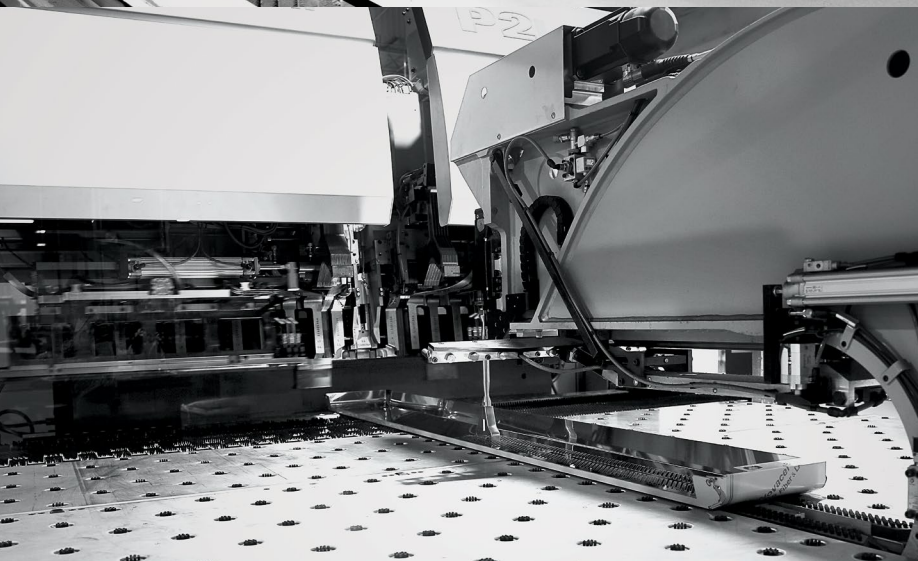


Workmanship

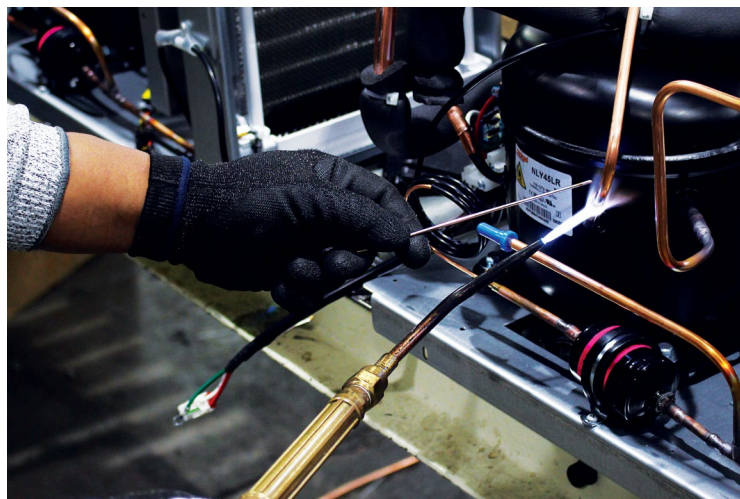
One's hands are the greatest tool

From laser cutting, welding, and bending, we utilize many types of robots for production but ultimately, the most important tool is our hands. Every PRO Series unit is not complete until it has been thoroughly inspected and perfected by hand.









Made in U.S.A

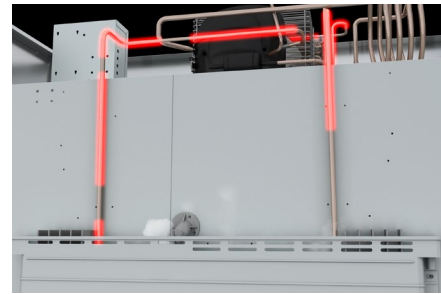
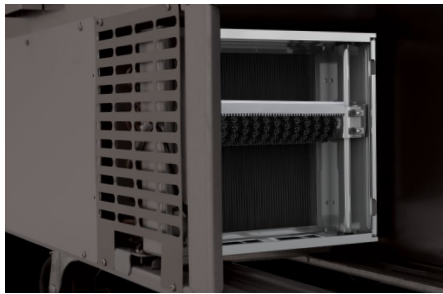
Supporting American workers

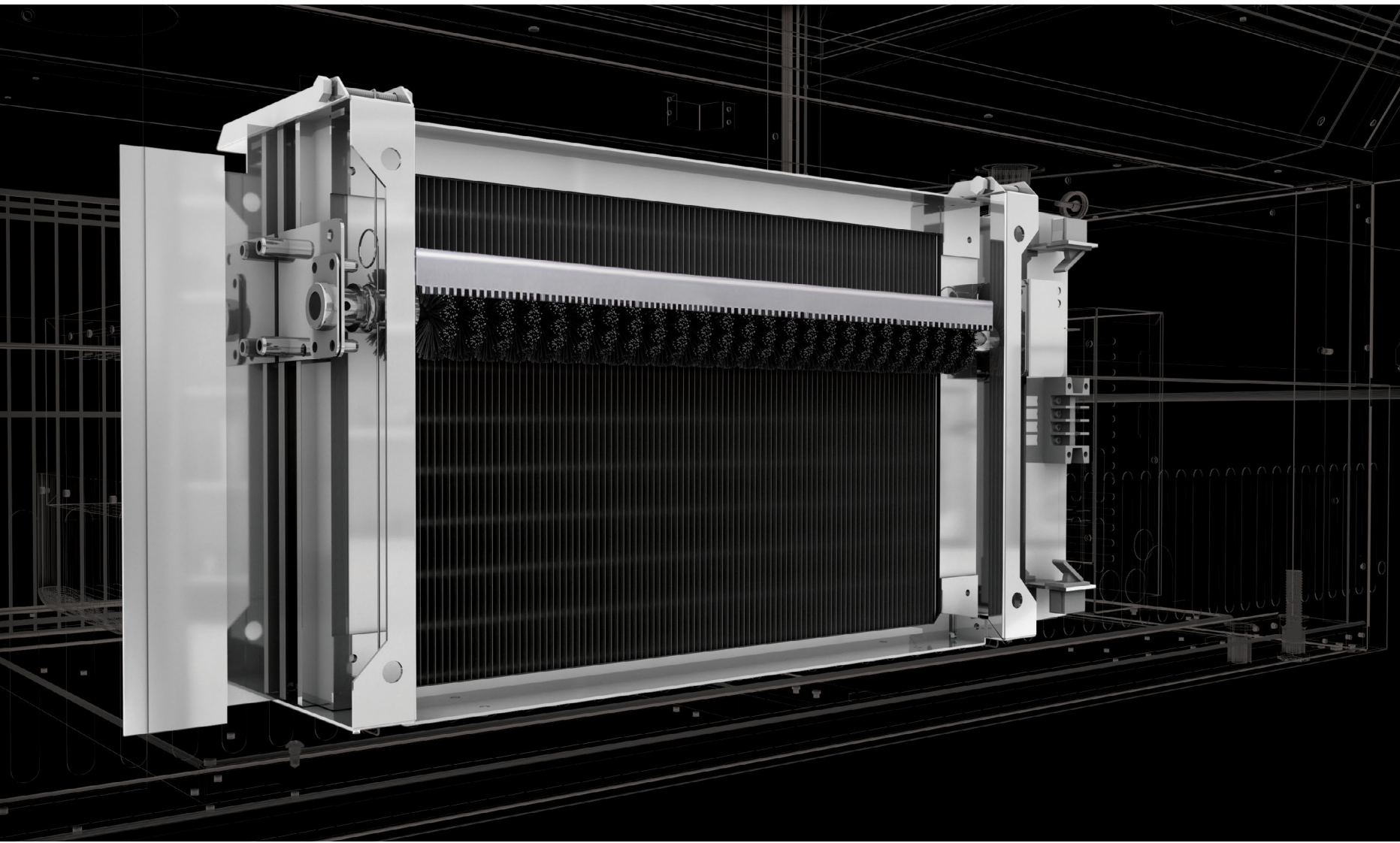
At the foundation of our products is all-American, quality craftsmanship. Our employees' relentless dedication to their craft has perfected the PRO Series. Turbo Air continues to create equal opportunities for Americans with our Texas-based factory and 13 branches across the United States.

Innovation

Trailblazer of the refrigeration industry

We are best known for turning technological pipe dreams into reality, especially with the Self-Cleaning Condenser. The commercial refrigeration industry has had an age-old problem: dirty condensers causing the majority of service calls. To solve this problem we invented the ultimate solution, the Self-Cleaning Condenser that automatically cleans the dust off the condenser daily and is available on all the PRO Series units at no additional cost.









Design

The beauty is in the details

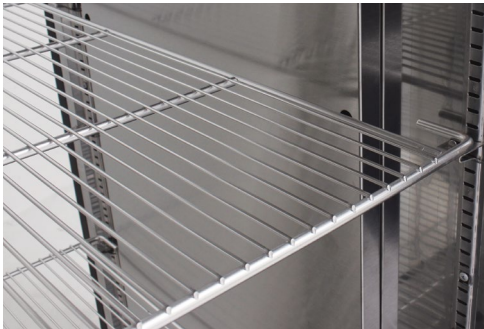
The elegance of the all stainless steel exterior elevates any setting while maintaining cleanliness. The digital temperature control & monitor system's touch panel brings the technological sophistication and sleek design that no other commercial refrigeration brings to the table. The PRO Series beauty is in the eye of every beholder.



Durability

Lifetime guaranteed

All PRO Series units have a lifetime guaranteed heavy-duty hinges, handles, and shelves. They also boast a stainless steel interior and 22 gauge exterior, guaranteeing the utmost in cleanliness and product longevity. Another standard on all PRO Series units is sturdy, hygienic stainless steel shelving, a crucial component because it comes in contact with food.





Performance

Performance that excels beyond your highest expectations

PRO Series units maintain NSF standard temperatures even when placed in 100°F ambient temperature. PRO Series glass door reach ins have LED interior lighting with a dimming option which reduces energy consumption. PRO Series prep tables and undercounters have a fan control feature, which the fan stops running when the door opens to prevent drawing in hot air. These features combined have a 3~7% reduction in energy consumption and prevent food spoilage.









Eco-friendly technology

The most common refrigerants that have been used in the industry are HFCs(hydrofluorocarbons R-134a, R-404A), replacements for CFCs (chlorofluorocarbons) which are harmful substances proven to deplete the ozone layer. HFC's are not directly ozone-depleting but these strong greenhouse gases have been shown to have a negative impact on the environment, contributing to global warming up to 4,000 times more than CO₂. These GWP refrigerants are listed among substances regulated by the Kyoto Protocol of 1992, and HFC substances such as R-134a and R-404A will be banned by new U.S government regulations starting January 1, 2019.

The industry must embrace the new climate-friendly natural refrigerant HC (hydrocarbons).



All temperature information provided is obtained through NSF standard testing environment.

Each of our products certifications may differ under certain specifications and various options.

Turbo Air is committed to the environment with innovative and eco-friendly technology!

By utilizing our innovative, eco-friendly technology, Turbo Air has now replaced all previous refrigerants with climate-friendly hydrocarbons R-600A (Isobutane) and R-290 (Propane). In our efforts to protect our environment, we have decreased energy consumption by 25%.

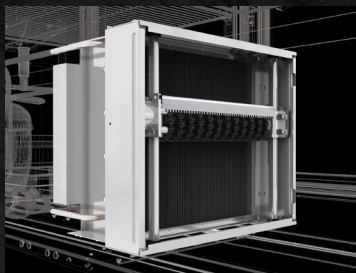
What is Hydrocarbon?

HC (hydrocarbon) is a sustainable alternative to HFC. Hydrocarbons (R-600A, R-290) are natural refrigerants that have no ODP (ozone depleting potential) and very low GWP (global warming potential). Moreover, HC based equipment have been shown to be more energy efficient compared to HFC based equipment, which translates to lower operating costs. The EPA approved R-290 (Propane) and R-600A (Isobutane) as acceptable refrigerants for use in commercial refrigeration, stand-alone equipment refrigerators, and freezers.

PRO SERIES

Self-Cleaning Condenser

The accumulation of dust in the condenser can cause the failure or breakdown of refrigerators. Refrigerators run normally until they reach a certain level of accumulation. At some point, when they are over the limit, their performance drops quickly resulting in damage to, or disposal of the stored products inside. The Self-Cleaning Condenser device keeps the condenser clean and prevents system failure by automatically brushing daily.



Touchscreen control & monitor system

A touchscreen control and monitor system comes standard and showcases the latest in smart technology. The touchscreen control is located on the outside, making it convenient to check and control the temperature.

Thermostatic expansion valve



Hydrocarbon refrigerants

With innovative and eco-friendly technology, Turbo Air brings you hydrocarbon refrigerators designed to meet DOE's Energy Conservation Standards in 2017 and to use EPA's SNAP Program approved HC refrigerants. Hydrocarbon refrigerants do not deplete the ozone layer and have very low contribution to global warming (ODP-0, GWP-3).



All stainless steel cabinet construction

The PRO Series model boasts a stainless steel interior and a 22 gauge stainless steel exterior (galvanized steel top, bottom). It guarantees the utmost in cleanliness and long product life. The PRO Series model adds a touch of style to the most refined setting.







PRO Reach-Ins



Self-Cleaning Condenser

A fine mesh filter catches dust, while rotating brushes run daily to move dirt away from the condenser. This revolutionary device comes at no additional cost.

All stainless steel cabinet construction

The PRO Series model boasts a stainless steel interior and a 22 gauge stainless steel exterior (galvanized steel top, bottom). It guarantees the utmost in cleanliness and long product life. The PRO Series model adds a touch of style to the most refined setting.

Thermostatic expansion valve

Touchscreen control & monitor system

A touchscreen control and monitor system comes standard and showcases the latest in smart technology. The touchscreen control is located on the outside, making it convenient to check and control the temperature.

Sturdy, clean stainless steel shelving

Shelves are the most important part of cleanliness as they come in direct contact with food. After a while, PVC coated wire shelves may peel, rust and lead to unsanitary conditions. Only the Turbo Air PRO Series uniquely provides stainless steel shelving.

Hydrocarbon refrigerants

With innovative and eco-friendly technology, Turbo Air brings you hydrocarbon refrigerators designed to meet DOE's Energy Conservation Standards in 2017 and to use EPA's SNAP Program approved HC refrigerants. Hydrocarbon refrigerants do not deplete the ozone layer and have very low contribution to global warming (ODP-0, GWP-3).

LED interior lighting

Includes a U.S. patented dimming option, exclusively from Turbo Air. This feature reduces energy consumption by 3~5% (Glass door reach-ins only).

See page 36-39 for Reach-In models and specifications.



PRO Reach-In Drawers



Self-Cleaning Condenser

A fine mesh filter catches dust, while rotating brushes run daily to move dirt away from the condenser. This revolutionary device comes at no additional cost.

All stainless steel cabinet construction

The PRO Series model boasts a stainless steel interior and a 22 gauge stainless steel exterior (galvanized steel top, bottom). It guarantees the utmost in cleanliness and long product life. The PRO Series model adds a touch of style to the most refined setting.

Thermostatic expansion valve

Touchscreen control & monitor system

A touchscreen control and monitor system comes standard and showcases the latest in smart technology. The touchscreen control is located on the outside, making it convenient to check and control the temperature.

Sturdy, clean stainless steel shelving

Shelves are the most important part of cleanliness as they come in direct contact with food. After a while, PVC coated wire shelves may peel, rust and lead to unsanitary conditions. Only the Turbo Air PRO Series uniquely provides stainless steel shelving (Excluding PRO-26R-D4-N).

Hydrocarbon refrigerants

With innovative and eco-friendly technology, Turbo Air brings you hydrocarbon refrigerators designed to meet DOE's Energy Conservation Standards in 2017 and to use EPA's SNAP Program approved HC refrigerants. Hydrocarbon refrigerants do not deplete the ozone layer and have very low contribution to global warming (ODP-0, GWP-3).

LED interior lighting

(Excluding PRO-26R-D4-N)

See page 37 for Reach-In Drawer models and specifications.





PRO Heated Cabinets

All stainless steel cabinet construction

The PRO Series model boasts a stainless steel interior and a 22 gauge stainless steel exterior (galvanized steel top, bottom). It guarantees the utmost in cleanliness and long product life. The PRO Series model adds a touch of style to the most refined setting.

Sturdy, clean stainless steel shelving

Shelves are the most important part of cleanliness as they come in direct contact with food. After a while, PVC coated wire shelves may peel, rust and lead to unsanitary conditions. Only the Turbo Air PRO Series uniquely provides stainless steel shelving.

Touchscreen control & monitor system

A touchscreen control and monitor system comes standard and showcases the latest in smart technology. The touchscreen control is located on the outside, making it convenient to check and control the temperature.

Efficient temperature

Heated cabinet holds 140°F ~ 180°F for the best in food preservation.

LED interior lighting

Includes a U.S. patented dimming option, exclusively from Turbo Air. This feature reduces energy consumption by 3~5% (Glass door reach-ins only).

See page 39-42 for Heated Cabinet models and specifications.







Prep Tables

LED interior lighting & fan control

Energy efficient LED lighting lights every corner, making items easy to find. Fan control function automatically shuts off the fan when the door is open, which prevents hot air from being drawn in, thus maintaining the cool inner temperature.

Sturdy, clean stainless steel shelving

Shelves are the most important part of cleanliness as they come in direct contact with food. Only the PRO Series uniquely provides stainless steel shelving.

Cold Bunker System

Only Turbo Air offers an innovative Cold Bunker design to maintain the perfect environment for your supplies. This forced air system covers the entire food pan area, creating a protective temperature shield.

Stainless steel cabinet construction

The PRO Series model boasts a stainless steel interior (Aluminum door liner) and a 22 gauge stainless steel exterior (galvanized steel bottom). It guarantees the utmost in cleanliness and long product life. The PRO Series adds a touch of style to the most refined setting.

Touchscreen control & monitor system

A touchscreen control and monitor system comes standard and showcases the latest in smart technology. The touchscreen control is located on the outside, making it convenient to check and control the temperature.

Durable Cutting Board

9-1/2" deep, 1/2" thick high-density polyethylene cutting board included with convenient side rail.

See page 42-45 for Prep Table models and specifications.



Undercounters & Worktops

LED interior lighting & fan control

Energy efficient LED lighting lights every corner, making items easy to find. Fan control function automatically shuts off the fan when the door is open, which prevents hot air from being drawn in, thus maintaining the cool inner temperature.

Stainless steel cabinet construction

The PRO Series model boasts a stainless steel interior (Aluminum door liner) and a 22 gauge stainless steel exterior (galvanized steel bottom). It guarantees the utmost in cleanliness and long product life. The PRO Series adds a touch of style to the most refined setting.

Touchscreen control & monitor system

Keep food products safe by maintaining constant temperatures. External digital display allows for easy monitoring.

Ergonomically designed doors

Customers' fatigue fades away with easy grip handles and doors that open effortlessly. These features along with self-closing doors make this the ultimate choice in customer convenience.

Sturdy, clean stainless steel shelving

Shelves are the most important part of cleanliness as they come in direct contact with food. Only the PRO Series uniquely provides stainless steel shelving.

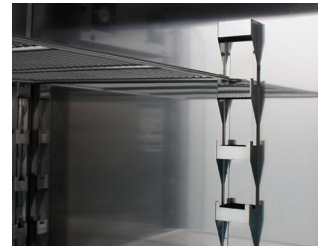
See page 45-48 for Undercounter & Worktop models and specifications.





Correctional facility options for PRO Reach-In models

- Stainless steel light cover with security screws
- Stainless steel PCB cover with security screws
- Hinges without covers
- Stainless steel mesh cover on top
- Locking hasp
- Tray slide with security screws
- Flanged leg
- Security screws: Hex type, Star type



See page 37 & 39 for Correctional Facility models and specifications.

Parts & Accessories

1. Display PCB 2. Cutting Board 3. Stainless Steel Shelf 4. Clear Lid
 5. #1 Tray Slides for PRO Reach-Ins 6. #4 Tray Slides for PRO Reach-Ins 7. Universal Tray Slides for PRO Reach-Ins 8. Pans
 9. Removable Cover 10. Casters 11. 1" Leveling Legs 12. Pan Rack



Reach-Ins

SOLID DOOR REFRIGERATORS & FREEZERS



Model	CU./FT.	#of Doors	#of Shelves	HP	AMPS	Watt (W)	Crated Weight (lbs.)	L x D* x H† (inches)
PRO-12R-N(-L)	9.6	1	3	1/4+	2.5	200	262	17 3/4 x 27 1/4 x 78
PRO-15R-N(-L)	13.18	1	3	1/4+	2.5	200	298	17 3/4 x 34 3/8 x 78
PRO-26R-N(-L)	25.41	1	3	1/2	7.0	600	352	28 3/4 x 34 1/8 x 78
PRO-50R-N	47.73	2	6	1/2	8.0	650	538	51 3/4 x 34 1/8 x 78
PRO-77R-N(-AR)(-AL)	75.06	3	9	1	9.0	950	684	77 3/4 x 34 1/8 x 78
PRO-12-2R-N(-L)	9.4	2	3	1/4+	2.5	200	262	17 3/4 x 27 1/4 x 78
PRO-15-2R-N(-L)	12.67	2	3	1/4+	2.5	200	298	17 3/4 x 34 3/8 x 78
PRO-26-2R-N(-L)	24.76	2	3	1/2	7.0	650	384	28 3/4 x 34 1/8 x 78
PRO-50-4R-N(-AR)	47.57	4	6	1/2	8.0	750	526	51 3/4 x 34 1/8 x 78
PRO-77-6R-N	74.78	6	9	1	9.0	1200	734	77 3/4 x 34 1/8 x 78
PRO-15F-N(-L)	12.67	1	3	1/2	4.5	300	300	17 3/4 x 34 3/8 x 78
PRO-26F-N(-L)	25.35	1	3	1/2	7.0	650	358	28 3/4 x 34 1/8 x 78
PRO-50F-N	48.36	2	6	1	9.0	1000	538	51 3/4 x 34 1/8 x 78
PRO-77F-N(-AL)	74.94	3	9	1/2 x 2	15.0	1200	738	77 3/4 x 34 1/8 x 78
PRO-15-2F-N(-L)	12.67	2	3	1/2	4.5	300	300	17 3/4 x 34 3/8 x 78
PRO-26-2F-N(-L)	24.39	2	3	1/2	7.0	700	366	28 3/4 x 34 1/8 x 78
PRO-50-4F-N	48.06	4	6	1	9.0	1000	549	51 3/4 x 34 1/8 x 78
PRO-77-6F-N	74.66	6	9	1/2 x 2	15.0	1200	795	77 3/4 x 34 1/8 x 78

* Depth does not include for door handles. † Height does not include for caster height.

GLASS DOOR REFRIGERATORS



Model	CU./FT.	#of Doors	#of Shelves	HP	AMPS	Watt (W)	Crated Weight (lbs.)	L x D* x H† (inches)
PRO-12R-G-N(-L)	9.47	1	3	1/4+	2.5	200	223	17 3/4 x 27 1/4 x 78
PRO-15R-G-N(-L)	13.34	1	3	1/4+	2.5	200	300	17 3/4 x 34 3/8 x 78
PRO-26R-G-N(-L)	25.73	1	3	1/2	7.0	650	386	28 3/4 x 34 1/8 x 78
PRO-50R-G-N	47.36	2	6	1/2	8.0	700	552	51 3/4 x 34 1/8 x 78
PRO-12-2R-G-N(-L)	9.4	2	3	1/4+	2.5	200	223	17 3/4 x 27 1/4 x 78
PRO-15-2R-G-N(-L)	12.5	2	3	1/4+	2.5	200	242	17 3/4 x 34 3/8 x 78
PRO-26-2R-G-N(-L)	25.73	2	3	1/2	7.0	650	386	28 3/4 x 34 1/8 x 78
PRO-50-4R-G-N	47.36	4	6	1/2	8.0	750	552	51 3/4 x 34 1/8 x 78
PRO-77-6R-G-N	75.2	6	9	1	9.0	1200	838	77 3/4 x 34 1/8 x 78
PRO-26R-GSH-N(-L)	25.15	2	3	1/2	7.0	650	394	28 3/4 x 34 1/8 x 78
PRO-50R-GSH-N	50.8	4	6	1/2	8.0	750	564	51 3/4 x 34 1/8 x 78

* Depth does not include for door handles. † Height does not include for caster height.

Design and specifications subject to change without notice. Most updated spec sheets are available at www.turboairinc.com.

SOLID DOOR REFRIGERATORS & FREEZERS - FOR CORRECTIONAL FACILITY



Model	CU./FT.	#of Doors	#of Shelves	HP	AMPS	Watt (W)	Crated Weight (lbs.)	L x D* x H† (inches)
PRO-26R-N-CRT	25.41	1	3	1/2	7.0	600	352	28 3/4 x 33 7/8 x 78
PRO-50R-N-CRT	47.73	2	6	1/2	8.0	650	538	51 3/4 x 33 7/8 x 78
PRO-77R-N-CRT	75.06	3	9	1	9.0	950	765	77 3/4 x 33 7/8 x 78
PRO-26-2R-N-CRT	24.76	2	3	1/2	7.0	650	352	28 3/4 x 33 7/8 x 78
PRO-50-4R-N-CRT	47.57	4	6	1/2	8.0	750	538	51 3/4 x 33 7/8 x 78
PRO-26F-N-CRT	25.35	1	3	1/2	7.0	650	356	28 3/4 x 33 7/8 x 78
PRO-50F-N-CRT	48.36	2	6	1	9.0	1000	538	51 3/4 x 33 7/8 x 78

* Depth does not include for door handles. † Height does not include for leg height.

FISH & POULTRY DRAWER REFRIGERATORS



Model	CU./FT.	#of Drawers	#of Doors	#of Shelves	HP	AMPS	Watt (W)	Crated Weight (lbs.)	L x D* x H† (inches)
PRO-26R-D2-N	24.76	2	1	2	1/2	7.0	600	352	28 3/4 x 34 1/8 x 78
PRO-26R-D4-N	25.41	4	-	-	1/2	7.0	600	352	28 3/4 x 34 1/8 x 78
PRO-26R-G-D2-N	25.73	2	1	2	1/2	7.0	600	365	28 3/4 x 34 1/8 x 78

* Depth does not include for door & drawer handles. † Height does not include for caster height.

SOLID DOOR PASS-THRU REFRIGERATORS & FREEZERS



Model	CU./FT.	#of Doors	#of Shelves	HP	AMPS	Watt (W)	Crated Weight (lbs.)	L x D* x H† (inches)
PRO-26R-PT-N(-L)(-LR)(-RL)	26.47	2	3	1/2	7.0	600	392	28 3/4 x 36 1/4 x 78
PRO-50R-PT-N	50.64	4	6	1/2	8.0	650	590	51 3/4 x 36 1/4 x 78
PRO-77R-PT-N	78.18	6	9	1	9.0	950	777	77 3/4 x 36 1/4 x 78
PRO-26-2R-PT-N(-L)(-LR)(-RL)	26.27	4	3	1/2	7.0	650	410	28 3/4 x 36 1/4 x 78
PRO-50-4R-PT-N	50.27	8	6	1/2	8.0	750	594	51 3/4 x 36 1/4 x 78
PRO-77-6R-PT-N	77.63	12	9	1	9.0	1200	777	77 3/4 x 36 1/4 x 78
PRO-26F-PT-N	26.47	2	3	1/2	7.0	650	365	28 3/4 x 36 1/4 x 78
PRO-50F-PT-N	50.64	4	6	1	9.0	1000	543	51 3/4 x 36 1/4 x 78

* Depth does not include for door handles. † Height does not include for caster height.

Design and specifications subject to change without notice. Most updated spec sheets are available at www.turboairinc.com.



Reach-Ins

GLASS DOOR PASS-THRU REFRIGERATORS



Model	CU./FT.	#of Doors	#of Shelves	HP	AMPS	Watt (W)	Crated Weight (lbs.)	L x D* x H† (inches)
PRO-26R-G-PT-N(-L)(-LR)	29.01	2	3	1/2	7.0	650	422	28 ³ / ₄ x 36 ¹ / ₄ x 78
PRO-50R-G-PT-N	54.82	4	6	1/2	8.0	700	646	51 ³ / ₄ x 36 ¹ / ₄ x 78
PRO-26R-GS-PT-N(-L)	26.48	2	3	1/2	7.0	650	416	28 ³ / ₄ x 36 ¹ / ₄ x 78
PRO-26R-SG-PT-N(-L)	26.48	2	3	1/2	7.0	650	416	28 ³ / ₄ x 36 ¹ / ₄ x 78
PRO-50R-GS-PT-N	53.87	4	6	1/2	8.0	750	633	51 ³ / ₄ x 36 ¹ / ₄ x 78
PRO-26-2R-G-PT-N(-L)(-LR)(-RL)	27.52	4	3	1/2	7.0	650	416	28 ³ / ₄ x 36 ¹ / ₄ x 78
PRO-50-4R-G-PT-N	50.23	8	6	1/2	8.0	750	674	51 ³ / ₄ x 36 ¹ / ₄ x 78
PRO-26R-GSH-PT-N(-L)(-RL)	26.48	4	3	1/2	7.0	650	432	28 ³ / ₄ x 36 ¹ / ₄ x 78
PRO-50R-GSH-PT-N	53.47	8	6	1/2	8.0	750	633	51 ³ / ₄ x 36 ¹ / ₄ x 78
PRO-26-2R-GS-PT-N(-L)	26.48	4	3	1/2	7.0	650	416	28 ³ / ₄ x 36 ¹ / ₄ x 78
PRO-26-2R-SG-PT-N(-L)	26.48	4	3	1/2	7.0	650	416	28 ³ / ₄ x 36 ¹ / ₄ x 78
PRO-50-4R-GS-PT-N	53.47	8	6	1/2	8.0	750	633	51 ³ / ₄ x 36 ¹ / ₄ x 78

* Depth does not include for door handles. † Height does not include for caster height.

SOLID & GLASS DOOR ROLL-IN REFRIGERATORS & FREEZERS



Model	CU./FT.	#of Doors	#of Rack Accepted	HP	AMPS	Watt (W)	Crated Weight (lbs.)	L x D* x H (inches)
PRO-26R-RI-N(-L)	39.32	1	1	1/2	7.0	600	492	34 x 37 ³ / ₄ x 84 ¹ / ₄
PRO-50R-RI-N	81.87	2	2	1	8.0	650	820	66 ⁷ / ₈ x 37 ³ / ₄ x 84 ¹ / ₄
PRO-26R-G-RI-N(-L)	39.68	1	1	1/2	7.0	650	496	34 x 37 ³ / ₄ x 84 ¹ / ₄
PRO-50R-G-RI-N	82.01	2	2	1	8.0	700	865	66 ⁷ / ₈ x 37 ³ / ₄ x 84 ¹ / ₄
PRO-26F-RI-N(-L)	39.99	1	1	1/2	7.0	650	508	34 x 37 ³ / ₄ x 84 ¹ / ₄
PRO-50F-RI-N	81.7	2	2	1/2 x 2	16.0	1000	862	66 ⁷ / ₈ x 37 ³ / ₄ x 84 ¹ / ₄

* Depth does not include for door handles & ramps.

Design and specifications subject to change without notice. Most updated spec sheets are available at www.turboairinc.com.

ROLL-IN REFRIGERATORS - FOR CORRECTIONAL FACILITY



Model	CU./FT.	#of Doors	HP	AMPS	Watt (W)	Crated Weight (lbs.)	L x D* x H (inches)
PRO-26R-RI-N-CRT	39.32	1	1/2	7.0	600	510	34 x 37 ³ / ₄ x 84 ¹ / ₄
PRO-50R-RI-N-CRT	81.87	2	1	8.0	650	820	66 ⁷ / ₈ x 37 ³ / ₄ x 84 ¹ / ₄

* Depth does not include for door handles & ramps.

SOLID & GLASS DOOR ROLL-THRU REFRIGERATORS



Model	CU./FT.	#of Doors	#of Rack Accepted	HP	AMPS	Watt (W)	Crated Weight (lbs.)	L x D* x H (inches)
PRO-26R-RT-N(-L)	40.71	2	1	1/2	7.0	600	580	34 x 40 ¹ / ₈ x 84 ¹ / ₄
PRO-50R-RT-N	88.2	4	2	1	8.0	650	925	67 x 40 ¹ / ₈ x 84 ¹ / ₄
PRO-26R-G-RT-N(-L)	40.71	2	1	1/2	7.0	650	593	34 x 40 ¹ / ₈ x 84 ¹ / ₄
PRO-50R-G-RT-N	88.2	4	2	1	8.0	700	976	67 x 40 ¹ / ₈ x 84 ¹ / ₄

* Depth does not include for door handles & ramps.

Heated Cabinets

SOLID DOOR HEATED CABINETS



Model	CU./FT.	#of Doors	#of Shelves	Voltage (V)	AMPS	Watt (W)	Crated Weight (lbs.)	L x D* x H† (inches)
PRO-15H(-L)	14	1	3	115	8.5	950	254	17 ³ / ₄ x 34 ³ / ₈ x 78
PRO-26H(-L)	25	1	3	115	13.5	1550	304	28 ³ / ₄ x 33 ⁷ / ₈ x 78
PRO-26H2(-L)	25	1	3	208	7.5	1550	304	28 ³ / ₄ x 33 ⁷ / ₈ x 78
PRO-50H	48	2	6	208	15.0	3000	462	51 ³ / ₄ x 33 ⁷ / ₈ x 78
PRO-77H	73	3	9	208	15.0	3000	768	77 ³ / ₄ x 33 ⁷ / ₈ x 78
PRO-15-2H(-L)	13.8	2	3	115	8.5	950	260	17 ³ / ₄ x 34 ³ / ₈ x 78
PRO-26-2H(-L)	25	2	3	115	13.5	1550	310	28 ³ / ₄ x 33 ⁷ / ₈ x 78
PRO-26-2H2(-L)	25	2	3	208	7.5	1550	310	28 ³ / ₄ x 33 ⁷ / ₈ x 78
PRO-50-4H	47	4	6	208	15.0	3000	480	51 ³ / ₄ x 33 ⁷ / ₈ x 78
PRO-77-6H	73	6	9	208	15.0	3000	786	77 ³ / ₄ x 33 ⁷ / ₈ x 78

* Depth does not include for door handles. † Height does not include for caster height.

Design and specifications subject to change without notice. Most updated spec sheets are available at www.turboairinc.com.





Heated Cabinets

GLASS DOOR HEATED CABINETS



Model	CU./FT.	#of Doors	#of Shelves	Voltage (V)	AMPS	Watt (W)	Crated Weight (lbs.)	L x D* x H† (inches)
PRO-15H-G	14	1	3	115	8.5	950	265	17 ³ / ₄ x 34 ³ / ₈ x 78
PRO-26H-G(-L)	26	1	3	115	13.5	1550	314	28 ³ / ₄ x 33 ⁷ / ₈ x 78
PRO-26H2-G(-L)	26	1	3	208	7.5	1550	314	28 ³ / ₄ x 33 ⁷ / ₈ x 78
PRO-50H-G	49	2	6	208	15.0	3000	482	51 ³ / ₄ x 33 ⁷ / ₈ x 78
PRO-77H-G	75	3	9	208	15.0	3000	798	77 ³ / ₄ x 33 ⁷ / ₈ x 78
PRO-15-2H-G	13.8	2	3	115	8.5	950	270	17 ³ / ₄ x 34 ³ / ₈ x 78
PRO-26-2H-G(-L)	26	2	3	115	13.5	1550	320	28 ³ / ₄ x 33 ⁷ / ₈ x 78
PRO-26-2H2-G(-L)	26	2	3	208	7.5	1550	320	28 ³ / ₄ x 33 ⁷ / ₈ x 78
PRO-50-4H-G	49	4	6	208	15.0	3000	500	51 ³ / ₄ x 33 ⁷ / ₈ x 78
PRO-77-6H-G	76	6	9	208	15.0	3000	816	77 ³ / ₄ x 33 ⁷ / ₈ x 78

* Depth does not include for door handles. † Height does not include for caster height.

SOLID DOOR HEATED CABINETS - FOR CORRECTIONAL FACILITY



Model	CU./FT.	#of Doors	#of Shelves	Voltage (V)	AMPS	Watt (W)	Crated Weight (lbs.)	L x D* x H† (inches)
PRO-26H-CRT	25	1	3	115	13.5	1550	304	28 ³ / ₄ x 33 ⁷ / ₈ x 78
PRO-50H-CRT	48	2	6	208	15.0	3000	462	51 ³ / ₄ x 33 ⁷ / ₈ x 78
PRO-77H-CRT	73	3	9	208	15.0	3000	768	77 ³ / ₄ x 33 ⁷ / ₈ x 78

* Depth does not include for door handles. † Height does not include for leg height.

SOLID DOOR PASS-THRU HEATED CABINETS



Model	CU./FT.	#of Doors	#of Shelves	Voltage (V)	AMPS	Watt (W)	Crated Weight (lbs.)	L x D* x H† (inches)
PRO-26H-PT(-L)(-LR)	26	2	3	115	13.5	1550	324	28 ³ / ₄ x 36 ¹ / ₄ x 78
PRO-26H2-PT(-L)(-LR)	26	2	3	208	7.5	1550	324	28 ³ / ₄ x 36 ¹ / ₄ x 78
PRO-50H-PT	51	4	6	208	15.0	3000	510	51 ³ / ₄ x 36 ¹ / ₄ x 78
PRO-77H-PT	79	6	9	208	15.0	3000	798	77 ³ / ₄ x 36 ¹ / ₄ x 78
PRO-26-2H-PT(-L)(-LR)(-RL)	26	4	3	115	13.5	1550	346	28 ³ / ₄ x 36 ¹ / ₄ x 78
PRO-26-2H2-PT(-L)(-LR)(-RL)	26	4	3	208	7.5	1550	346	28 ³ / ₄ x 36 ¹ / ₄ x 78
PRO-50-4H-PT(-AL)(-AR)	51	8	6	208	15.0	3000	510	51 ³ / ₄ x 36 ¹ / ₄ x 78
PRO-77-6H-PT	79	12	9	208	15.0	3000	894	77 ³ / ₄ x 36 ¹ / ₄ x 78

* Depth does not include for door handles. † Height does not include for caster height.

Design and specifications subject to change without notice. Most updated spec sheets are available at www.turboairinc.com.

GLASS DOOR PASS-THRU HEATED CABINETS



Model	CU./FT.	#of Doors	#of Shelves	Voltage (V)	AMPS	Watt (W)	Crated Weight (lbs.)	L x D* x H† (inches)
PRO-26H-G-PT(-L)	28	2	3	115	13.5	1550	344	28 3/4 x 36 1/4 x 78
PRO-26H2-G-PT(-L)	28	2	3	208	7.5	1550	344	28 3/4 x 36 1/4 x 78
PRO-50H-G-PT	54	4	6	208	15.0	3000	550	51 3/4 x 36 1/4 x 78
PRO-77H-G-PT	80	6	9	208	15.0	3000	924	77 3/4 x 36 1/4 x 78
PRO-26H-GS-PT(-L)	27	2	3	115	13.5	1550	342	28 3/4 x 36 1/4 x 78
PRO-26H2-GS-PT(-L)	27	2	3	208	7.5	1550	342	28 3/4 x 36 1/4 x 78
PRO-26H-SG-PT(-L)	27	2	3	115	13.5	1550	342	28 3/4 x 36 1/4 x 78
PRO-26H2-SG-PT(-L)	27	2	3	208	7.5	1550	342	28 3/4 x 36 1/4 x 78
PRO-50H-GS-PT	53	4	6	208	15.0	3000	500	51 3/4 x 36 1/4 x 78
PRO-50H-SG-PT	53	4	6	208	15.0	3000	500	51 3/4 x 36 1/4 x 78
PRO-77H-GS-PT	79	6	9	208	15.0	3000	828	77 3/4 x 36 1/4 x 78
PRO-77H-SG-PT	79	6	9	208	15.0	3000	828	77 3/4 x 36 1/4 x 78
PRO-26-2H-G-PT(-L)	28	4	3	115	13.5	1550	366	28 3/4 x 36 1/4 x 78
PRO-26-2H2-G-PT(-L)	28	4	3	208	7.5	1550	366	28 3/4 x 36 1/4 x 78
PRO-50-4H-G-PT	54	8	6	208	15.0	3000	550	51 3/4 x 36 1/4 x 78
PRO-77-6H-G-PT	82	12	9	208	15.0	3000	924	77 3/4 x 36 1/4 x 78
PRO-26-2H-GS-PT(-L)	27	4	3	115	13.5	1550	342	28 3/4 x 36 1/4 x 78
PRO-26-2H2-GS-PT(-L)	27	4	3	208	7.5	1550	342	28 3/4 x 36 1/4 x 78
PRO-26-2H-SG-PT(-L)	27	4	3	115	13.5	1550	342	28 3/4 x 36 1/4 x 78
PRO-26-2H2-SG-PT(-L)	27	4	3	208	7.5	1550	342	28 3/4 x 36 1/4 x 78
PRO-50-4H-GS-PT	53	8	6	208	15.0	3000	530	51 3/4 x 36 1/4 x 78
PRO-50-4H-SG-PT	53	8	6	208	15.0	3000	530	51 3/4 x 36 1/4 x 78
PRO-77-6H-GS-PT	81	12	9	208	15.0	3000	909	77 3/4 x 36 1/4 x 78
PRO-77-6H-SG-PT	81	12	9	208	15.0	3000	909	77 3/4 x 36 1/4 x 78

* Depth does not include for door handles. † Height does not include for caster height.

SOLID & GLASS DOOR ROLL-IN HEATED CABINETS



Model	CU./FT.	#of Doors	# of Rack Accepted	Voltage (V)	AMPS	Watt (W)	Crated Weight (lbs.)	L x D* x H (inches)
PRO-26H-RI(-L)	39	1	1	115	13.5	1550	436	34 x 37 3/4 x 84 1/4
PRO-26H2-RI(-L)	39	1	1	208	7.5	1550	436	34 x 37 3/4 x 84 1/4
PRO-50H-RI	77	2	2	208	15.0	3000	699	66 7/8 x 37 3/4 x 84 1/4
PRO-26H-G-RI(-L)	40	1	1	115	13.5	1550	446	34 x 37 3/4 x 84 1/4
PRO-26H2-G-RI(-L)	40	1	1	208	7.5	1550	446	34 x 37 3/4 x 84 1/4
PRO-50H-G-RI	79	2	2	208	15.0	3000	739	66 7/8 x 37 3/4 x 84 1/4

* Depth does not include for door handles & ramps.

Design and specifications subject to change without notice. Most updated spec sheets are available at www.turboairinc.com.

Heated Cabinets

SOLID & GLASS DOOR ROLL-THRU HEATED CABINETS



Model	CU./FT.	#of Doors	Voltage (V)	AMPS	Watt (W)	Crated Weight (lbs.)	L x D* x H (inches)
PRO-26H-RT(-L)	42	2	115	13.5	1550	484	34 x 40 1/8 x 84 1/4
PRO-26H2-RT(-L)	42	2	208	7.5	1550	484	34 x 40 1/8 x 84 1/4
PRO-50H-RT	82	4	208	15.0	3000	796	66 7/8 x 40 1/8 x 84 1/4
PRO-26H-G-RT(-L)	44	2	115	13.5	1550	504	34 x 40 1/8 x 84 1/4
PRO-26H2-G-RT(-L)	44	2	208	7.5	1550	504	34 x 40 1/8 x 84 1/4
PRO-50H-G-RT	86	4	208	15.0	3000	876	66 7/8 x 40 1/8 x 84 1/4

* Depth does not include for door handles & ramps.

Prep Tables

SOLID DOORS



Model	CU./FT.	#of Doors	#of Shelves	#of Pans	HP	AMPS	Watt (W)	Crated Weight (lbs.)	L x D x H† (inches)
PST-28-N(-L)	7	1	1	8	1/6	6.6	220	195	27 1/2 x 30* x 37
PST-48-N	12	2	2	12	1/5	6.5	530	272	48 1/4 x 30* x 37
PST-60-N	16	2	2	16	1/5	8.9	530	316	60 1/4 x 30* x 37
PST-72-N(-AL)(-AR)	19	2	2	18	3/8	9.9	690	372	72 5/8 x 30* x 37
PST-28-12-N(-L)	8	1	1	12	1/6	6.6	220	220	27 1/2 x 34† x 39 1/8
PST-48-18-N	15	2	2	18	1/5	6.5	530	264	48 1/4 x 34† x 39 1/8
PST-60-24-N	19	2	2	24	1/5	8.9	530	352	60 1/4 x 34† x 39 1/8
PST-72-30-N(-AL)(-AR)	23	2	2	30	3/8	9.9	690	396	72 5/8 x 34† x 39 1/8

* Depth does not include for door handles & rear spacers. † Depth does not include for cutting boards & rear spacers.

‡ Height does not include for caster height.

GLASS DOORS



Model	CU./FT.	#of Doors	#of Shelves	#of Pans	HP	AMPS	Watt (W)	Crated Weight (lbs.)	L x D* x H† (inches)
PST-28-G-N(-L)	7	1	1	8	1/6	6.6	220	211	27 1/2 x 30 x 37
PST-48-G-N	12	2	2	12	1/5	6.5	530	287	48 1/4 x 30 x 37
PST-60-G-N	16	2	2	16	1/5	8.9	530	334	60 1/4 x 30 x 37
PST-72-G-N	19	2	2	18	3/8	9.9	690	389	72 5/8 x 30 x 37

* Depth does not include for door handles & rear spacers. † Height does not include for caster height.

Design and specifications subject to change without notice. Most updated spec sheets are available at www.turboairinc.com.

SPECIALTY PRODUCTS (Slide/Clear/Glass Lids, Dual Sided)



Model	CU./FT.	#of Doors	#of Shelves	#of Pans	HP	AMPS	Watt (W)	Crated Weight (lbs.)	L x D* x H† (inches)
PST-28-12-N-SL	8	1	1	12	1/6	6.6	220	223	27 1/2 x 34 x 39
PST-48-18-N-SL	15	2	2	18	1/5	6.5	530	268	48 1/4 x 34 x 39
PST-60-24-N-SL	19	2	2	24	1/5	8.9	530	357	60 1/4 x 34 x 39
PST-72-30-N-SL	23	2	2	30	3/8	9.9	690	399	72 5/8 x 34 x 39
PST-28-12-N-CL	8	1	1	12	1/6	6.6	220	222	27 1/2 x 34 x 39 1/8
PST-48-18-N-CL	15	2	2	18	1/5	6.5	530	266	48 1/4 x 34 x 39 1/8
PST-60-24-N-CL	19	2	2	24	1/5	8.9	530	354	60 1/4 x 34 x 39 1/8
PST-72-30-N-CL	23	2	2	30	3/8	9.9	690	398	72 5/8 x 34 x 39 1/8
PST-48-18-N-GL	15	2	2	18	1/5	6.5	530	273	48 1/4 x 34 5/8 x 32 1/8
PST-60-24-N-GL	19	2	2	24	1/5	8.9	530	351	60 1/4 x 34 5/8 x 32 1/8
PST-72-30-N-GL	23	2	2	30	3/8	9.9	690	392	72 5/8 x 34 5/8 x 32 1/8
PST-48-18-N-DS	15	2	2	18	1/5	6.5	530	282	48 1/4 x 46 1/2 x 40
PST-60-24-N-DS	19	2	2	24	1/5	8.9	530	370	60 1/4 x 46 1/2 x 40
PST-72-30-N-DS	23	2	2	30	3/8	9.9	690	414	72 5/8 x 46 1/2 x 40

* Depth does not include for cutting boards & rear spacers. † Height does not include for caster height.

DRAWER UNITS



Model	CU./FT.	#of Doors	#of Drawers	#of Shelves	#of Pans	HP	AMPS	Watt (W)	Crated Weight (lbs.)	L x D* x H† (inches)
PST-28-D2-N	7	-	2	-	8	1/6	6.6	220	216	27 1/2 x 30 x 37
PST-48-D2R(L)-N	12	1	2	1	12	1/5	6.5	530	266	48 1/4 x 30 x 37
PST-48-D4-N	12	-	4	-	12	1/5	6.5	530	282	48 1/4 x 30 x 37
PST-60-D2R(L)-N	16	1	2	1	16	1/5	8.9	530	338	60 1/4 x 30 x 37
PST-60-D4-N	16	-	4	-	16	1/5	8.9	530	371	60 1/4 x 30 x 37
PST-72-D2R(L)-N	23	1	2	1	18	3/8	9.9	690	382	72 5/8 x 30 x 37
PST-72-D4-N	23	-	4	-	18	3/8	9.9	690	395	72 5/8 x 30 x 37
PST-72-D6-N	23	-	6	-	18	3/8	9.9	690	402	72 5/8 x 30 x 37

* Depth does not include for drawer handles & rear spacers. † Height does not include for caster height.

Design and specifications subject to change without notice. Most updated spec sheets are available at www.turboairinc.com.

Prep Tables

MEGA TOP DRAWER UNITS



Model	CU./FT.	#of Doors	#of Drawers	#of Shelves	#of Pans	HP	AMPS	Watt (W)	Crated Weight (lbs.)	L x D* x H† (inches)
PST-28-12-D2-N	7	-	2	-	12	1/6	6.6	220	231	27 1/2 x 34 x 39 1/8
PST-48-18-D2R(L)-N	15	1	2	1	18	1/5	6.5	530	282	48 1/4 x 34 x 39 1/8
PST-48-18-D4-N	15	-	4	-	18	1/5	6.5	530	298	48 1/4 x 34 x 39 1/8
PST-60-24-D2R(L)-N	19	1	2	1	24	1/5	8.9	530	357	60 1/4 x 34 x 39 1/8
PST-60-24-D4-N	19	-	4	-	24	1/5	8.9	530	394	60 1/4 x 34 x 39 1/8
PST-72-30-D2R(L)-N	23	1	2	1	30	3/8	9.9	690	410	72 5/8 x 34 x 39 1/8
PST-72-30-D4-N	23	-	4	-	30	3/8	9.9	690	414	72 5/8 x 34 x 39 1/8
PST-72-30-D6-N	23	-	6	-	30	3/8	9.9	690	439	72 5/8 x 34 x 39 1/8

* Depth does not include for cutting boards & rear spacers. † Height does not include for caster height.

SOLID DOOR & DRAWER UNITS - FRONT BREATHING



Model	CU./FT.	#of Doors	#of Drawers	#of Shelves	#of Pans	HP	AMPS	Crated Weight (lbs.)	L x D* x H† (inches)
PST-28-FB-N(-L)	7.12	1	-	1	8	1/6	6.6	220	27 1/2 x 30 x 37
PST-48-FB-N	13.4	2	-	2	12	1/5	6.5	272	48 1/4 x 30 x 37
PST-60-FB-N	16.9	2	-	2	16	1/5	8.9	316	60 1/4 x 30 x 37
PST-72-FB-N	20.5	2	-	2	18	3/8	9.9	372	72 5/8 x 30 x 37
PST-28-D2-FB-N	7.12	-	2	-	8	1/6	6.6	220	27 1/2 x 30 x 37
PST-48-D2R(L)-FB-N	13.4	1	2	1	12	1/5	6.5	266	48 1/4 x 30 x 37
PST-48-D4-FB-N	13.4	-	4	-	12	1/5	6.5	282	48 1/4 x 30 x 37
PST-60-D2R(L)-FB-N	16.9	1	2	1	16	1/5	8.9	316	60 1/4 x 30 x 37
PST-60-D4-FB-N	16.9	-	4	-	16	1/5	8.9	316	60 1/4 x 30 x 37
PST-72-D2R(L)-FB-N	20.5	1	2	1	18	3/8	9.9	372	72 5/8 x 30 x 37
PST-72-D4-FB-N	20.5	-	4	-	18	3/8	9.9	372	72 5/8 x 30 x 37

* Depth does not include for door & drawer handles & rear spacers. † Height does not include for caster height.

Design and specifications subject to change without notice. Most updated spec sheets are available at www.turboairinc.com.

MEGA TOP SOLID DOOR & DRAWER UNITS - FRONT BREATHING



Model	CU./FT.	#of Doors	#of Drawers	#of Shelves	#of Pans	HP	AMPS	Crated Weight (lbs.)	L x D* x H† (inches)
PST-28-12-FB-N(-L)	7.12	1	-	1	12	1/6	6.6	220	27 1/2 x 34 x 39 1/8
PST-48-18-FB-N	13.4	2	-	2	18	1/5	6.5	264	48 1/4 x 34 x 39 1/8
PST-60-24-FB-N	16.9	2	-	2	24	1/5	8.9	352	60 1/4 x 34 x 39 1/8
PST-72-30-FB-N	20.5	2	-	2	30	3/8	9.9	410	72 5/8 x 34 x 39 1/8
PST-28-12-D2-FB-N	7.12	-	2	-	12	1/6	6.6	220	27 1/2 x 34 x 39 1/8
PST-48-18-D2R(L)-FB-N	13.4	1	2	1	18	1/5	6.5	264	48 1/4 x 34 x 39 1/8
PST-48-18-D4-FB-N	13.4	-	4	-	18	1/5	6.5	264	48 1/4 x 34 x 39 1/8
PST-60-24-D2R(L)-FB-N	16.9	1	2	1	24	1/5	8.9	352	60 1/4 x 34 x 39 1/8
PST-60-24-D4-FB-N	16.9	-	4	-	24	1/5	8.9	352	60 1/4 x 34 x 39 1/8
PST-72-30-D2R(L)-FB-N	20.5	1	2	1	30	3/8	9.9	410	72 5/8 x 34 x 39 1/8
PST-72-30-D4-FB-N	20.5	-	4	-	30	3/8	9.9	410	72 5/8 x 34 x 39 1/8

* Depth does not include for cutting boards & rear spacers. † Height does not include for caster height.

Undercounters

SOLID DOOR REFRIGERATORS & FREEZERS



Model	CU./FT.	#of Doors	#of Shelves	HP	AMPS	Watt (W)	Crated Weight (lbs.)	L x D* x H† (inches)
PUR-28-N(-L)	6.8	1	1	1/6	6.6	220	163	27 1/2 x 30 x 30
PUR-48-N	12.2	2	2	1/6	6.5	220	246	48 1/4 x 30 x 30
PUR-60-N	15.5	2	2	1/6	8.9	220	282	60 1/4 x 30 x 30
PUR-72-N(-AL)	18.8	2	2	1/6	9.9	220	352	72 5/8 x 30 x 30
PUF-28-N(-L)	6.8	1	1	1/4	4.5	300	163	27 1/2 x 30 x 30
PUF-48-N	12.2	2	2	1/3	8.0	350	246	48 1/4 x 30 x 30
PUF-60-N	17.2	2	2	1/2	5.6	500	282	60 1/4 x 30 x 30

* Depth does not include for door handles & rear spacers. † Height does not include for caster height.

Design and specifications subject to change without notice. Most updated spec sheets are available at www.turboairinc.com.

Undercounters

DRAWER UNIT REFRIGERATORS & FREEZERS



Model	CU./FT.	#of Doors	#of Drawers	#of Shelves	HP	AMPS	Watt (W)	Crated Weight (lbs.)	L x D* x H† (inches)
PUR-28-D2-N	6.8	-	2	-	1/6	6.6	220	175	27 1/2 x 30 x 30
PUR-48-D2R(L)-N	12.2	1	2	1	1/6	6.5	220	259	48 1/4 x 30 x 30
PUR-48-D4-N	12.2	-	4	-	1/6	6.5	220	267	48 1/4 x 30 x 30
PUR-60-D2R(L)-N	15.5	1	2	1	1/6	8.9	220	293	60 1/4 x 30 x 30
PUR-60-D4-N	15.5	-	4	-	1/6	8.9	220	298	60 1/4 x 30 x 30
PUR-72-D2R(L)-N	18.8	1	2	1	1/6	9.9	220	359	72 5/8 x 30 x 30
PUR-72-D4-N	18.8	-	4	-	1/6	9.9	220	362	72 5/8 x 30 x 30
PUF-28-D2-N	6.8	-	2	-	1/4	4.5	300	176	27 1/2 x 30 x 30
PUF-48-D2R(L)-N	12.2	1	2	1	1/3	8.0	350	258	48 1/4 x 30 x 30
PUF-48-D4-N	12.2	-	4	-	1/3	8.0	350	269	48 1/4 x 30 x 30
PUF-60-D2R(L)-N	17.2	1	2	1	1/2	5.6	500	291	60 1/4 x 30 x 30
PUF-60-D4-N	17.2	-	4	-	1/2	5.6	500	299	60 1/4 x 30 x 30

* Depth does not include for door handles & rear spacers. † Height does not include for caster height.

GLASS DOOR REFRIGERATORS



Model	CU./FT.	#of Doors	#of Shelves	HP	AMPS	Watt (W)	Crated Weight (lbs.)	L x D* x H† (inches)
PUR-28-G-N(-L)	6.8	1	1	1/6	6.6	220	171	27 1/2 x 30 x 30
PUR-48-G-N	12.2	2	2	1/6	6.5	220	260	48 1/4 x 30 x 30
PUR-60-G-N	15.5	2	2	1/6	8.9	220	290	60 1/4 x 30 x 30
PUR-72-G-N	18.8	2	2	1/6	9.9	220	358	72 5/8 x 30 x 30

* Depth does not include for door handles & rear spacers. † Height does not include for caster height.

Design and specifications subject to change without notice. Most updated spec sheets are available at www.turboairinc.com.

Worktops

SOLID DOOR REFRIGERATORS & FREEZERS



Model	CU./FT.	#of Doors	#of Shelves	HP	AMPS	Watt (W)	Crated Weight (lbs.)	L x D* x H† (inches)
PWR-28-N(-L)	6.8	1	1	1/6	6.6	220	167	27 1/2 x 30 x 33 5/8
PWR-48-N	12.2	2	2	1/6	6.5	220	285	48 1/4 x 30 x 33 5/8
PWR-60-N	15.5	2	2	1/6	8.9	220	349	60 1/4 x 30 x 33 5/8
PWR-72-N	18.8	2	2	1/6	9.9	220	355	72 5/8 x 30 x 33 5/8
PWF-28-N(-L)	6.8	1	1	1/4	4.5	300	167	27 1/2 x 30 x 33 5/8
PWF-48-N	12.8	2	2	1/3	8.0	350	285	48 1/4 x 30 x 33 5/8
PWF-60-N	17.2	2	2	1/2	8.0	500	349	60 1/4 x 30 x 33 5/8

* Depth does not include for door handles & rear spacers. † Height does not include for caster height.

GLASS DOOR REFRIGERATORS



Model	CU./FT.	#of Doors	#of Shelves	HP	AMPS	Watt (W)	Crated Weight (lbs.)	L x D* x H† (inches)
PWR-28-G-N(-L)	6.8	1	1	1/6	6.6	220	177	27 1/2 x 30 x 33 5/8
PWR-48-G-N	12.2	2	2	1/6	6.5	220	295	48 1/4 x 30 x 33 5/8
PWR-60-G-N	15.5	2	2	1/6	8.9	220	359	60 1/4 x 30 x 33 5/8
PWR-72-G-N	18.8	2	2	1/6	9.9	220	365	72 5/8 x 30 x 33 5/8

* Depth does not include for door handles & rear spacers. † Height does not include for caster height.

Design and specifications subject to change without notice. Most updated spec sheets are available at www.turboairinc.com.



Worktops

DRAWER UNIT REFRIGERATORS & FREEZERS



Model	CU./FT.	#of Doors	#of Drawers	#of Shelves	HP	AMPS	Watt (W)	Crated Weight (lbs.)	L x D* x H† (inches)
PWR-28-D2-N	6.8	-	2	-	1/6	6.6	220	234	27 1/2 x 30 x 33 5/8
PWR-48-D2R(L)-N	12.2	1	2	1	1/6	6.5	220	249	48 1/4 x 30 x 33 5/8
PWR-48-D4-N	12.2	-	4	-	1/6	6.5	220	254	48 1/4 x 30 x 33 5/8
PWR-60-D2R(L)-N	15.5	1	2	1	1/6	8.9	220	293	60 1/4 x 30 x 33 5/8
PWR-60-D4-N	15.5	-	4	-	1/6	8.9	220	311	60 1/4 x 30 x 33 5/8
PWR-72-D2R(L)-N	18.8	1	2	1	1/6	9.9	220	364	72 5/8 x 30 x 33 5/8
PWR-72-D4-N	18.8	-	4	-	1/6	9.9	220	384	72 5/8 x 30 x 33 5/8
PWF-28-D2-N	6.8	-	2	-	1/4	4.5	300	234	27 1/2 x 30 x 33 5/8
PWF-48-D2R(L)-N	12.8	1	2	1	1/3	8.0	350	249	48 1/4 x 30 x 33 5/8
PWF-48-D4-N	12.8	-	4	-	1/3	8.0	350	254	48 1/4 x 30 x 33 5/8
PWF-60-D2R(L)-N	17.2	1	2	1	1/2	5.6	500	293	60 1/4 x 30 x 33 5/8
PWF-60-D4-N	17.2	-	4	-	1/2	5.6	500	311	60 1/4 x 30 x 33 5/8

* Depth does not include for door & drawer handles. † Height does not include for caster height.

Chef Base

REFRIGERATORS & FREEZERS



Model	CU./FT.	Pans Capacity (in.) (# of pans)*	#of Drawers	HP	AMPS	Watt (W)	Crated Weight (lbs.)	L x D† x H‡ (inches)
PRCBE-36R-N	4.6	12 7/8 x 20 x 6 (2) / 6 3/8 x 7 x 6 (6)	2	1/4	3.0	251	306	36 x 33 1/2 x 21 5/8
PRCBE-48R-N	6.83	12 7/8 x 20 x 6 (4)	2	1/4	3.2	259	332	48 x 33 1/2 x 21 5/8
PRCBE-60R-N	9.77	12 7/8 x 20 x 6 (6)	2	1/4	3.2	268	372	60 x 33 1/2 x 21 5/8
PRCBE-72R-N	12.14	12 7/8 x 20 x 6 (6) / 6 3/8 x 7 x 6 (6)	4	1/4	3.3	280	473	72 x 33 1/2 x 21 5/8
PRCBE-84R-N	14.75	12 7/8 x 20 x 6 (8)	4	3/8	3.8	373	528	84 x 33 1/2 x 21 5/8
PRCBE-96R-N	17.5	12 7/8 x 20 x 6 (10)	4	3/8	4.2	381	644	96 x 33 1/2 x 21 5/8
PRCBE-36F-N	4.6	12 7/8 x 20 x 6 (2) / 6 3/8 x 7 x 6 (6)	2	3/8	5.5	623	311	36 x 33 1/2 x 21 5/8
PRCBE-48F-N	6.83	12 7/8 x 20 x 6 (4)	2	3/8	5.9	738	337	48 x 33 1/2 x 21 5/8
PRCBE-60F-N	9.77	12 7/8 x 20 x 6 (6)	2	3/8	6.4	806	377	60 x 33 1/2 x 21 5/8
PRCBE-72F-N	12.14	12 7/8 x 20 x 6 (6) / 6 3/8 x 7 x 6 (6)	4	4/5	9.5	1151	478	72 x 33 1/2 x 21 5/8
PRCBE-84F-N	14.75	12 7/8 x 20 x 6 (8)	4	4/5	9.7	1259	533	84 x 33 1/2 x 21 5/8
PRCBE-96F-N	17.5	12 7/8 x 20 x 6 (10)	4	4/5	9.7	1333	650	96 x 33 1/2 x 21 5/8

* Drawer pan not included. † Depth does not include for drawer handles. ‡ Height does not include for caster height.

Design and specifications subject to change without notice. Most updated spec sheets are available at www.turboairinc.com.

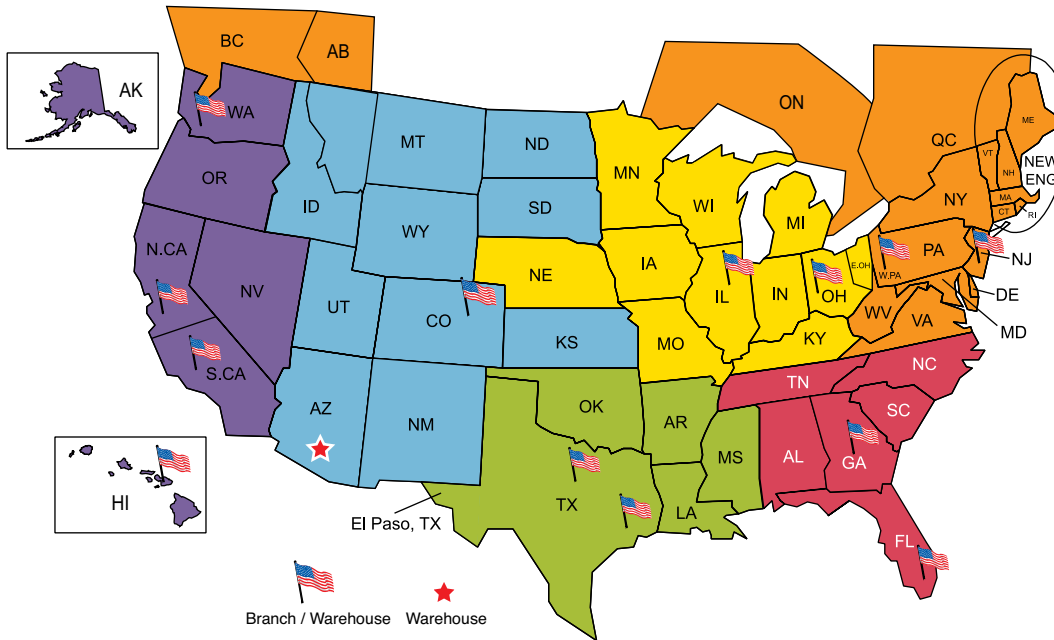








Sales Territory Map



Keith Kim
310-505-7420
Christopher Kim
(Northern CA & Nevada)
925-719-8808

Sun Kim
213-309-2788
John McDowell & Martha Cano
602-276-4969

June Park
562-577-2099

Chris Bae
630-442-4786

Andrew Kim
562-307-4355

Kevin Kim
562-305-3837
DMM Enterprises
201-525-1433
Ability Reps
978-281-2700
Sharkey & Associates
412-343-9541

Mike Andrus
National Accounts
214-770-3126

Rick Blinson
National Accounts
678-814-2201

D. J. Kourie
National Accounts
330-447-8411

Carlos Fuentes
National Accounts
310-745-9321

Bill Smith
National Accounts
314-378-0524

Steven Burke
National Accounts
512-296-1999

**TURBO AIR
REFRIGERATION REINVENTED**